



8<sup>TH</sup> ANNUAL

# THE CLEAR CHOICE

*female sale*

SATURDAY, OCTOBER 25, 2025

1:00 PM EST • MILAN, IN

*Selling 60+ Simmental & SimAngus Females  
Show Heifer Prospects, Proven Donors & Bred Females*



8<sup>TH</sup> ANNUAL  
**THE CLEAR CHOICE**  
*female sale*

**SATURDAY, OCTOBER 25, 2025**

**1:00 PM EST • MILAN, IN**

*Selling 60+ Simmental & SimAngus Females  
 Show Heifer Prospects, Proven Donors & Bred Females*

**SALE SCHEDULE**

**Friday, October 24<sup>th</sup>**

All Day . . . . . Cattle on display for viewing

**Saturday, October 25<sup>th</sup>**

8:00 AM . . . . . Cattle on display for viewing

1:00 PM . . . . . The Clear Choice Female Sale

**SALE LOCATION**

ClearWater Simmentals Sale Facility  
 5512E St Rd 350 Milan, IN 47031

*Sale facility has hard surface parking and is handicap accessible.*

**HOTELS**

Double Tree . . . . . 812-539-8888

51 Walnut St, Lawrenceburg, IN

Comfort Inn . . . . . 812-539-3600

1610 Flossie Dr, Lawrenceburg, IN 47025

**TRUCKING**

Brian Wyatt . . . . . 423-240-5533

Dick Coleman . . . . . 765-461-0954

Chance Campbell . . . . . 859-481-1478

**SALE TERMS & CONDITIONS**

All animals will be sold in accordance with the suggested guidelines of the American Simmental Association. For updated EPDs, genetic status, plus the current ASA guidelines and conditions go to [www.simmental.org](http://www.simmental.org). Announcements made sale day and from the auction block take precedence over printed material associated with this sale. Anyone attending this sale attends at his or her own risk. ClearWater Simmentals, DP Sales Management, LLC, or guest consignors will not be responsible for any personal injury while attending this sale.

**HERD HEALTH**

*All bred cattle* are vaccinated with Covexin 8, Vira Shield 6+VL5 HB, Autogenous Bacterin, Scour Guard 4KC, Multi Min and wormed with Dectomax pour on.

*All opens* are vaccinated with Covexin 8, Pyramid 5+Presponse SQ, Multi Min. and wormed with Dectomax pour on and Synanthic Suspension.

*All cattle* have been BVD tested and everything 3 years and older is Johnes tested annually. *All calves along side cows* have been given 1 dose of Nasalgen 3 PMH and Multi min.

**SALE DAY PHONES**

Doug Parke . . . . . 859-421-6100  
 Drew Hatmaker . . . . . 423-506-8844  
 Holli Hatmaker . . . . . 859-707-5248  
 Leah Meinders . . . . . 812-498-2840  
 Jeff Meinders . . . . . 812-871-1313  
 Bobby Beshears . . . . . 765-717-4789  
 Nate Hoeing . . . . . 765-561-3178  
 Joe Neal . . . . . 812-881-9881



**SALE MANAGEMENT**

**Doug & Debbie Parke | Drew & Holli Hatmaker**

153 Bourbon Hills Paris, KY 40361

Sales Management. office@dpsalesllc.com | www.dpsalesllc.com

**SALE STAFF**

Thomas Carper, Auctioneer . . . . . 540-336-2737  
 Mike Berger, Ring Staff . . . . . 574-850-5605  
 Rod Chapman, Ring Staff . . . . . 269-832-9622  
 Evan Eggersman, Ring Staff . . . . . 812-569-2951  
 Dalton Lundy, Consultant . . . . . 502-727-6898  
 Tim Schwab, Consultant . . . . . 812-569-8536

**ONLINE BIDDING**

Bid online and watch the sale live  
 at [dvauction.com](http://dvauction.com)



**SALE REGISTRATION & PAYMENT**

All buyer numbers will only be issued with a valid ID and payment is due day of sale. DP Sales Management, LLC accepts check, e-check, cash, or Visa and MasterCard with a 3% convenience fee. All purchases are expected to be paid day of sale unless arrangements have been made with sale management. Cattle will not be transferred until paid for in full. Purchases made through internet bidding follow the same terms. Payment must be completed on day of sale by credit card or e-check.

# join us in Milan, Indiana

Dear Friends,

Welcome to the 2025 Clear Choice Female Sale in Milan, Indiana! On behalf of DP Sales Management, Clear Water Simmentals, and our dedicated sale partners Beshears, Hoeing, and Neal, we are delighted to have you join us for this annual fall tradition.

Each year, the Clear Choice Sale brings together a community of cattlemen and women who share a common passion for Simmental and SimAngus genetics. This year's offering is no exception. From show heifers and proven donors to bred and open females, you will find a set of cattle designed to add both quality and longevity to your program. The consignors have worked diligently to present cattle that balance eye appeal with real-world functionality, and we believe you will recognize that dedication as you study the offering.

The sale will once again be hosted at the Clear Water Simmentals facility in Milan, a location well suited for showcasing the cattle in a comfortable and accessible environment. For those unable to attend in person, we are pleased to provide live online bidding through DVAuction. In addition, DP Sales Management will be on hand to assist with questions, bidding, trucking, or settlement details to make the process as smooth as possible.

We are deeply grateful to our consignors for entrusting us with this sale and for their unwavering commitment to the Simmental breed. Equally, we extend our thanks to each of you—our buyers, bidders, and supporters. Your confidence in these genetics is what allows this event to continue to thrive year after year. This is not just another cattle sale. Purchasing from the Clear Choice Sale is an invitation to be involved in something greater than cattle; a place dedicated to helping you market your cattle operation in the future, and promoting and supporting juniors through the Spotlight Junior Show.

As you look through the cattle, we hope you find individuals that not only advance your herd but also inspire your enthusiasm for the future of the beef industry. It is our privilege to work alongside you, and we are honored to welcome you to Milan for the **2025 Clear Choice Female Sale**.



Doug Parke, DP Sales Management



### ClearWater Simmentals

Jeff & Leah Meinders / Milan, Indiana  
Leah Meinders, 812-498-2840  
Jeff Meinders, 812-871-1313  
Jake Groat, *Herdsmen*, 503-741-5245  
[www.clearwatersimmentals.com](http://www.clearwatersimmentals.com)



### Beshears Simmentals

Bobby, Elizabeth, David, Amy,  
Kenny & Amy Beshears  
Winchester, IN  
765-717-4789 / [bobbybeshears@gmail.com](mailto:bobbybeshears@gmail.com)



### Lucky Penny Cattle Company

Nate Hoeing / Rushville, IN  
765-561-3178

### Neal Brothers

Joe Neal / Bicknell, IN  
812-881-9381



### Doug & Debbie Parke / Drew & Holli Hatmaker

Doug, 859-421-6100  
Drew, 423-506-8844 / Holli, 859-707-5248  
153 Bourbon Hills Paris, KY 40361  
[office@dpsalesllc.com](mailto:office@dpsalesllc.com) / [www.dpsalesllc.com](http://www.dpsalesllc.com)

# grateful for your trust

As we welcome you to the 2025 Clear Choice Female Sale, we can't help but reflect on how fortunate we are to be part of this great breed and community. Raising Simmental cattle is more than a business—it's a passion that connects us with people who value quality genetics and trust in our program. Your continued support drives us to keep improving, and it's with great excitement that we invite you to look through this year's offering.

This sale features a powerful and dynamic group of open females that we believe will make a lasting impact in their new homes. We are also thrilled with the momentum of our Spotlight Junior Show. We weren't sure how you could top the first show, but we along with Bobby, Nate, and Joe were overwhelmed with the number of juniors, cattle, and the positive comments from judge Terry Burks. Creating opportunities like this for our young customers continues to be one of the most rewarding parts of what we do.

Along those lines, we are grateful to once again be joined by the Beshears, Hoeing, and Neal families. They are not only valued consignors but also trusted friends whose partnership makes this sale possible. Their commitment to quality cattle and to this event strengthens the Clear Choice brand year after year.

Thank you for taking the time to study our offering. Sale videos will be available ahead of time, and cattle will be on display throughout the week leading up to sale day. As always, please don't hesitate to reach out with any questions—we are here to help.

We look forward to seeing you at the **2025 Clear Choice Female Sale** and sharing this exciting set of females with you.

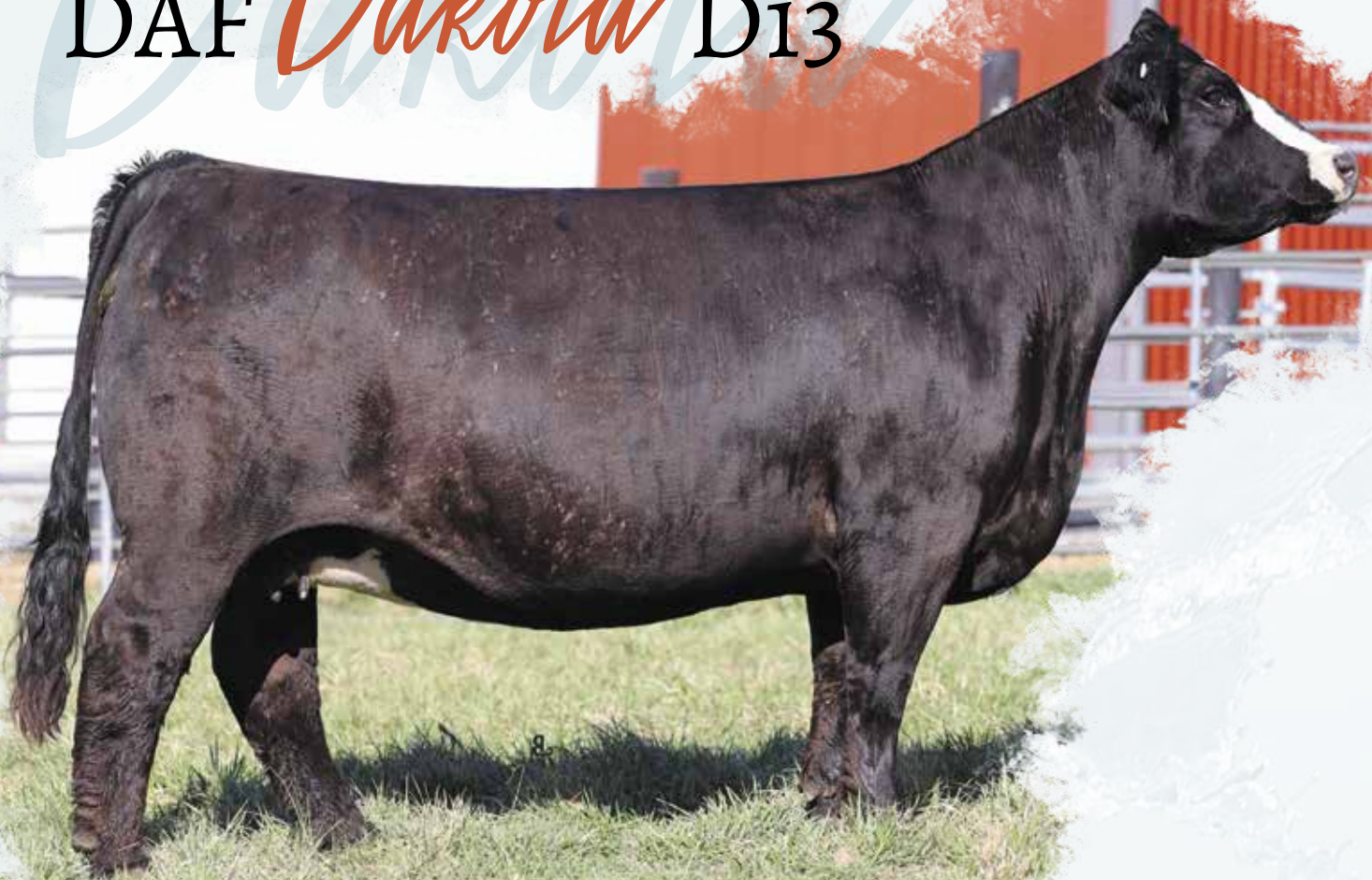
With gratitude,

*Jeff & Leah Meinders*  
ClearWater Simmentals



Clear Choice Sale Group

# DAF *Dakota* D13



BD. 3/2/16 • ASA#. 3131261 • Purebred

**LLSF PAYS TO BELIEVE ZU194 X KENCO STEEL MAGNOLIA**

CE	BW	WW	YW	MCE	Milk	MWW	Marb	REA	API
10.2	3.0	76.3	104.5	3.9	19.8	57.8	-0.09	0.76	102.7

# DAKOTA PROGENY



# Open Heifers



**WHF Point Proven H45**  
Sire of Lots 1 and 2

*lot 1*



**DAF Dakota D13**  
Dam of Lots 1-7



*lot 2*

CLEAR WATER SIMMENTALS

BESHEARS SIMMENTALS

**1**

CLRWTR *Dakotas Ms Debbie* N13D

BD. 1/2/25 • ASA#. 4533913 • Purebred Open Heifer  
Tattoo. N13D • Adj. BW. 93 lbs. Adj. WW. 671 lbs.

CCS/WHF OL` SON 48F

sire **WHF POINT PROVEN H45**

WHF DELILAH 45D

LLSF PAYS TO BELIEVE ZU194

dam **DAF DAKOTA D13**

KENCO STEEL MAGNOLIA

**2**

BESH *Ms Daisy* NY22

BD. 3/5/25 • ASA#. 4566135 • Purebred Open Heifer  
Tattoo. NY22 • Adj. BW. 75 lbs.

CCS/WHF OL` SON 48F

sire **WHF POINT PROVEN H45**

WHF DELILAH 45D

LLSF PAYS TO BELIEVE ZU194

dam **DAF DAKOTA D13**

KENCO STEEL MAGNOLIA

CE	BW	WW	YW	MCE	Milk	MWW	Marb	REA	API
11.8	1.8	88.7	133.8	5.8	19.7	64.0	0.05	0.87	117.4

Point Proven daughters are excelling across the country, and Ms Debbie N13D has that "wow factor." In the catalog, you'll find five Dakota females sired by three different bulls—this one rises to the top. Debbie combines many strong attributes into one ideal package. She stands on a big foot with plenty of bone, moves out smoothly, and displays muscle expression across her top and through her hip. If your goals include showing, winning banners, and then turning a female into a donor that produces more like her—or even better—Debbie is the kind to do it.

CE	BW	WW	YW	MCE	Milk	MWW	Marb	REA	API
14.0	-0.5	75.7	107.4	7.6	19.7	57.4	0.08	0.77	124.5

Daisy is one of the longest-necked females in this offering. Study her pedigree and you'll find some unique, high-quality cattle. Her donor dam traces back to Kenco Steel Magnolia, the high seller at Kenco purchased by Silent Night Farms, whose progeny have been winners nationwide. This is a pedigree full of proven, winning bloodlines that carry on beyond the show ring.

# Open Heifers



*lot 3*



**RP/BCR Eminence H005**  
Sire of Lot 3

CLEAR WATER SIMMENTALS

3

CLRWTR *Dakotas Ms Heather* D13H

BD. 1/4/25 • ASA# 4533920 • Purebred Open Heifer  
Tattoo. N13H • Adj. BW. 76 lbs. Adj. WW. 642 lbs.

WLE COPACETIC E02

sire **RP/BCR EMINENCE H005**

RP/MP BUILT TO LOVE A021

LLSF PAYS TO BELIEVE ZU194

dam **DAF DAKOTA D13**

KENCO STEEL MAGNOLIA

CE	BW	WW	YW	MCE	Milk	MWW	Marb	REA	API
8.7	1.9	77.2	106.7	3.4	14.4	52.9	0.04	0.77	106.2

We feel this baldy female will make some friends come sale day—several visitors have already added her to their short list. She is bold-sprung with loads of internal dimension and base width, yet loose-made and fluid in her movement. We're confident she will be an exceptional cow that offers both longevity and productivity. Her sire, Eminence—the Copacetic son from Buck Creek—we will continue to use in our program. Her dam, Dakota D13, anchors a pedigree loaded with proven producers, including Built to Love A021, Steel Magnolia, and Glamour. Dakota D13 herself has produced some of the top females in the sale. This female is homozygous polled, homozygous black, and stacked with all the right cattle behind her. We are very excited about the Dakota daughters and think you will be too.

# Open Heifers

These four full sisters combine the power of their donor dam, Dakota D13, with the championship-caliber pedigree of their sire, Rose Mc Encore 0463, a son of the \$100,000 half-interest SSF On Point 4028. On Point, backed by the proven donor Plum Creek Annie, has made a mark across North America in both show and sale arenas, and his influence shines through Encore, now making a big impact across breeds. On the maternal side, D13 continues to prove her worth year after year, with her consistency and production leaving an undeniable stamp on both females and bulls. These daughters carry that legacy forward—they are sound, deep-bodied, wide-based, and eye appealing, with the rib shape and balance that breeders strive for. Blending elite Angus sires with proven Simmental influence, their pedigree is built for both performance and style. Expect them to be competitive in the show ring and, just as importantly, to transition into productive cows that will deliver the kind of results this cow family is known for.



lot 4A



DAF Dakota D13  
Dam of Lots 1-7



lot 4B

BESHEARS SIMMENTALS

BESHEARS SIMMENTALS



BESH *Ms Dakota* N207

BD. 1/18/25 • ASA#. 4560649 • 1/2 Simmental Open Heifer  
Tattoo. N207 • Adj. BW. 89 lbs.

SSF ON POINT 4028  
sire **ROSE MC ENCORE 0463**  
BURNS ELBA 1454  
LLSF PAYS TO BELIEVE ZU194  
dam **DAF DAKOTA D13**  
KENCO STEEL MAGNOLIA



BESH *Ms Rose* N44E

BD. 1/26/25 • ASA#. 4560647 • 1/2 Simmental Open Heifer  
Tattoo. N44E • Adj. BW. 90 lbs.

SSF ON POINT 4028  
sire **ROSE MC ENCORE 0463**  
BURNS ELBA 1454  
LLSF PAYS TO BELIEVE ZU194  
dam **DAF DAKOTA D13**  
KENCO STEEL MAGNOLIA

CE	BW	WW	YW	MCE	Milk	MWW	Marb	REA	API
7.8	3.0	75.9	105.8	3.1	13.9	51.7	-0.02	0.52	86.3

CE	BW	WW	YW	MCE	Milk	MWW	Marb	REA	API
7.8	3.0	75.9	105.8	3.1	13.9	51.7	-0.02	0.52	86.3

# Open Heifers



*lot 4C*



**ROSE MC Encore 0463**  
Sire of Lots 4A-4D



*lot 4D*

CLEAR WATER SIMMENTALS

**4C**

CLRWTR *Dakotas Ms Judy* N13F

BD. 1/3/25 • ASA#. 4533914 • 1/2 Simmental Open Heifer  
Tattoo. N13F • Adj. BW. 98 lbs. Adj. WW. 732 lbs.

SSF ON POINT 4028

sire **ROSE MC ENCORE 0463**

BURNS ELBA 1454

LLSF PAYS TO BELIEVE ZU194

dam **DAF DAKOTA D13**

KENCO STEEL MAGNOLIA

**4D**

CLRWTR *Dakotas Ms Ethel* N13E

BD. 1/3/25 • ASA#. 4533918 • 1/2 Simmental Open Heifer  
Tattoo. N13E • Adj. BW. 87 lbs. Adj. WW. 698 lbs.

SSF ON POINT 4028

sire **ROSE MC ENCORE 0463**

BURNS ELBA 1454

LLSF PAYS TO BELIEVE ZU194

dam **DAF DAKOTA D13**

KENCO STEEL MAGNOLIA

CLEAR WATER SIMMENTALS

CE	BW	WW	YW	MCE	Milk	MWW	Marb	REA	API
8.4	4.1	82.2	110.7	3.5	13.9	54.9	-0.07	0.55	89.3

CE	BW	WW	YW	MCE	Milk	MWW	Marb	REA	API
8.8	1.1	69.3	95.3	3.8	13.9	48.5	0.04	0.45	93.4

# Open Heifers



Lot 5

BESHEARS SIMMENTALS

5

## BESH *Ms Dakota* NH23

BD. 1/17/25 • ASA#. 4566147 • Purebred Open Heifer  
Tattoo. NH23 • Adj. BW. 89 lbs.

KRJ DAKOTA OUTLAW G974

sire **NEXT LEVEL**

KRDL CAEDENCE C37

LLSF PAYS TO BELIEVE ZU194

dam **DAF DAKOTA D13**

KENCO STEEL MAGNOLIA

CE	BW	WW	YW	MCE	Milk	MWW	Marb	REA	API
9.4	3.8	81.2	115.4	3.6	21.3	61.7	-0.11	1.03	104.5

Here is another really attractive D13 daughter, sired by the popular Next Level. His progeny have been excelling across all sectors of the industry, and this solid black January purebred is no exception. She has the look to dominate in the show ring and the quality to be a lasting force in the cowherd.



Lot 6

CLEAR WATER SIMMENTALS

6

## CLRWTR *Dakotas Ms Melanie* N13M

BD. 2/7/25 • ASA#. 4533915 • Purebred Open Heifer  
Tattoo. N13M • Adj. BW. 93 lbs. Adj. WW. 734 lbs.

W/C RELENTLESS 32C

sire **JSUL SOMETHING ABOUT MARY 8421**

JBSF PROUD MARY

LLSF PAYS TO BELIEVE ZU194

dam **DAF DAKOTA D13**

KENCO STEEL MAGNOLIA

CE	BW	WW	YW	MCE	Milk	MWW	Marb	REA	API
13.2	1.6	78.5	114.1	3.9	16.1	55.3	-0.03	1.11	116.7

N13M is the kind of female that turns heads—smooth and neat through her shoulder, sleek in her neck and head, and carrying that eye-catching look every breeder wants to replicate. She's the complete package: balanced, functional, and backed by the powerhouse donor Dakota D13. With a cow card that keeps moving up and daughters that continue to rise in the ranks, N13M represents proven genetics with the style and consistency to elevate any program.



Lot 7

BESHEARS SIMMENTALS

7

## BESH *Ms Demmi* N057

BD. 3/28/25 • ASA#. 4566133 • Purebred Open Heifer  
Tattoo. N057 • Adj. BW. 89 lbs.

EGL FIRESTEEL 103F

sire **WHF/JS/CCS WOODFORD J001**

WHF SUMMER 365C

LLSF PAYS TO BELIEVE ZU194

dam **DAF DAKOTA D13**

KENCO STEEL MAGNOLIA

CE	BW	WW	YW	MCE	Milk	MWW	Marb	REA	API
12.5	2.1	79.4	109.8	4.8	19.3	58.8	0.13	0.66	127.8

Demi is smooth-shouldered, balanced, and complete with a great profile. As a late March heifer, she naturally looks a bit different than the bigger Januarys, but with time she'll come on strong. Take her home, be patient, and by next spring she'll impress. A Woodford daughter out of the Dakota donor, she brings the kind of proven genetics and quality you can build on.

# Open Heifers



**ES Five Star Limitless LJ39**  
Sire of Lots 8A and 8B

*lot 8A*



**W/C Angel 7114E**  
Dam of Lots 8A and 8B



*lot 8B*

CLEAR WATER SIMMENTALS

CLEAR WATER SIMMENTALS

**8A** CLRWTR *Angels Ms Frankie* N114E  
 BD. 2/18/25 • ASA#. 4533922 • Purebred Open Heifer  
 Tattoo. N114E • Adj. BW. 77 lbs. Adj. WW. 583 lbs.  
 sire Lcdr PROGRESSIVE 106G  
**ES FIVE STAR LIMITLESS LJ39**  
 ES J39  
 W/C RELENTLESS 32C  
 dam **W/C ANGEL 7114E**  
 W/C MISS ANGEL 2870Z

**8B** CLRWTR *Angels Ms Annie* N114F  
 BD. 2/21/25 • ASA#. 4533921 • Purebred Open Heifer  
 Tattoo. N114F • Adj. BW. 93 lbs. Adj. WW. 510 lbs.  
 sire Lcdr PROGRESSIVE 106G  
**ES FIVE STAR LIMITLESS LJ39**  
 ES J39  
 W/C RELENTLESS 32C  
 dam **W/C ANGEL 7114E**  
 W/C MISS ANGEL 2870Z

CE	BW	WW	YW	MCE	Milk	MWW	Marb	REA	API
16.0	-1.1	71.1	100.0	7.8	22.3	57.7	0.42	0.86	148.8

CE	BW	WW	YW	MCE	Milk	MWW	Marb	REA	API
14.9	-1.0	67.7	99.1	6.8	22.3	56.0	0.41	1.04	147.0

The ES Five Star Limitless progeny are an impressive group, and these two daughters are no exception. Limitless excels in calving ease (18.2, top 2% of the breed), carries a -2.3 BW EPD, and ranks top 2% for Marbling. He also brings strength in WW and YW (top 20%), MCE, MM, and MW (top 10%), and indexes with TI in the top 2% and API in the top 3% at 181. The calves are more than just good on paper—they've exceeded expectations in phenotype as well. The two females in this sale are smooth, correct, complete, and well-balanced. They are out of W/C Angel 7114E, a powerful donor we purchased in a flush from Jered Werning. Both heifers have tremendous potential, and their progeny will meet the highest standards of production, data, and profit—especially if retained in your herd. Customers who have used Limitless progeny are very pleased and have already gone back to use him again. Be sure to look up the cow card on W/C Angel—it's a pedigree you can invest in with confidence.

# Open Heifers



lot 9



**BESH/WHF Addy Lou MJU4 - Congratulations Cash Ruple Reserve Simmental Female, Indiana State Fair, Open Show Division Winner, Indiana State Fair, Junior Show Reserve Division, Hoosiers Beef Congress Supreme Champion Heifer, Wells County Fair Full Sib to Lot 10, Maternal Sib to Lots 11, 12, 13 & 14**



**BESH/WHF Amelia MG42**  
**13th Overall Bred & Owned 2025 AJSA National Classic**  
**Congratulations Kali Beshears & Buck Creek Ranch**  
**Full Sib to Lot 10, Maternal Sib to Lots 11, 12, 13 & 14**



lot 10

BESHEARS SIMMENTALS

BESHEARS SIMMENTALS

9

**BESH *Ms Dandy* NK95**

BD. 3/21/25 • ASA#. 4572975 • Purebred Open Heifer  
 Tattoo. NK95

W/C RELENTLESS 32C  
*sire* **JSUL SOMETHING ABOUT MARY 8421**  
 JBSF PROUD MARY  
 TJ MAIN EVENT 503B  
*dam* **WHF DELILAH 45D**  
 WHF ANGELS ENVY 245A

10

**BESH *Ms Alysa* N159**

BD. 4/16/25 • ASA#. 4566145 • Purebred Open Heifer  
 Tattoo. N159 • Adj. BW. 90 lbs.

W/C RELENTLESS 32C  
*sire* **RECKONING 711F**  
 RWA KRISHA-ET  
 MR HOC BROKER  
*dam* **WHF ANDIE 365A**  
 PRS SUMMER W364

CE	BW	WW	YW	MCE	Milk	MWW	Marb	REA	API
13.7	0.3	77.0	114.2	5.5	17.8	56.2	0.01	0.96	124.7

We're really pleased to be a part of the Delilah cow family, as she continues to leave a big mark on the breed. Dandy is easy on the eyes and will be sure to make your short list. Tying into these rich pedigrees brings an abundance of consistency to any program.

CE	BW	WW	YW	MCE	Milk	MWW	Marb	REA	API
7.6	3.4	76.0	103.6	3.9	23.7	61.8	-0.01	0.78	108.5

Alysa is sired by Reckoning, the past Show Bull of the Year who is now proving himself as a sire of high sellers and elite females. In last year's sale, two Reckoning daughters brought \$16,000 and \$10,250. This striking bald-faced heifer has donor and show-ring potential written all over her. She combines stout bone, width, rib shape, and structure with style and balance. The pedigree stacks up too—Reckoning x Andie x Broker x Summer x Sierra 145E x 245C—a recipe for success in any Simmental program.

# Open Heifers



**WHF Andie 365A**  
Dam of Lots 10 - 12

*lot 11*



**Champion Simmental & 3rd Overall Female**  
**2025 Tennessee State Fair**  
Full Sib to Lot 12  
Maternal Sib to Lots 11, 12, 13 & 14



*lot 12*

BESHEARS SIMMENTALS

BESHEARS SIMMENTALS

**11**

**BESH** *Ms Alice*

BD. 4/26/25 • ASA#. 4566141 • Purebred Open Heifer  
Tattoo. NA24 • Adj. BW. 91 lbs.

KRJ DAKOTA OUTLAW G974

*sire* **NEXT LEVEL**

KRDL CAEDENCE C37

MR HOC BROKER

*dam* **WHF ANDIE 365A**

PRS SUMMER W364

**12**

**BESH** *Ms Ainsley* N2620

BD. 4/9/25 • ASA#. 4566143 • Purebred Open Heifer  
Tattoo. N2620 • Adj. BW. 82 lbs.

W/C RELENTLESS 32C

*sire* **JSUL SOMETHING ABOUT MARY 8421**

JBSF PROUD MARY

MR HOC BROKER

*dam* **WHF ANDIE 365A**

PRS SUMMER W364

CE	BW	WW	YW	MCE	Milk	MWW	Marb	REA	API
8.8	4.3	84.1	121.3	3.9	26.6	68.6	-0.16	1.04	105.9

Alice is one of the youngest heifers in the sale, but don't overlook her potential. Picture her next July at the AJSA show or at the Spotlight in April, where she could earn \$3,000. She's the kind of quality that competes and wins. Sired by Next Level and out of donor Andie, Alice is a safe investment in performance and pedigree.

CE	BW	WW	YW	MCE	Milk	MWW	Marb	REA	API
11.2	2.8	78.9	116.6	3.4	21.7	61.1	-0.09	0.90	109.5

N2620 is a striking blaze-faced heifer that will catch the eye of juniors and parents alike. The proven Sam x Andie mating delivers again here. A full sister sold last year for \$6,000 to repeat buyer Trent Kritsch. With the Eastern Regional AJSA show coming up in Columbus, Indiana, she's got the look and potential to compete. A Spotlight-quality heifer—we'd definitely bring her back in April.

# Open Heifers



Lot 13A



Lot 13B

Lot 13A: We've been proud to have WHF Andie in our program—she's exceeded expectations. In the 2024 sale, we sold five daughters by her, including two Reckonings that brought \$16,000 and \$10,250. Over the past three years, most of her progeny have commanded \$7,500–\$10,000+, with commercial and purebred breeders alike seeking her sons. This is the first All Right daughter out of Andie to sell. Sleek, fancy, and backed by a cow family that produces quality udders and functional cattle, she'll fit anyone's program.

Lot 13B: The Griswold crew reports the All Right calves are looking great—and this one is no exception. Sired by All Right and out of proven donor Andie (with 139 progeny on record), NJ24 is a smooth-made, stripe-faced prospect. Around here, the heifers are practically pets, and this is one we'd love to keep ourselves.



Lot 14

BESHEARS SIMMENTALS

13A

BESH *Ms Autumn* N338

BD. 3/14/25 • ASA#. 4560651 • Purebred Open Heifer  
Tattoo. N338 • Adj. BW. 89 lbs.

BESHEARS SIMMENTALS

13B

BESH *Ms Andie* NJ24

BD. 2/28/25 • ASA#. 4566137 • Purebred Open Heifer  
Tattoo. NJ24 • Adj. BW. 85 lbs.

OMF EPIC E27  
sire **WINC ALL RIGHT 213K**  
WINC HOLLIE  
MR HOC BROKER  
dam **WHF ANDIE 365A**  
PRS SUMMER W364

CE	BW	WW	YW	MCE	Milk	MWW	Marb	REA	API
10.3	2.1	80.3	116.7	5.8	31.1	71.2	-0.02	0.90	118.1

BESHEARS SIMMENTALS

14

BESH *Ms Asia* N15

BD. 2/17/25 • ASA#. 4566139 • Purebred Open Heifer  
Tattoo. N15 • Adj. BW. 92 lbs.

MR CCF 20-20  
sire **VCL FORESIGHT**  
HCCO COUNTESS 412D  
MR HOC BROKER  
dam **WHF ANDIE 365A**  
PRS SUMMER W364

CE	BW	WW	YW	MCE	Milk	MWW	Marb	REA	API
8.7	3.9	82.8	114.5	3.6	25.0	66.3	-0.02	0.87	110.4

Asia is a broody baldy with a soft middle, rib shape, and eye-catching pattern. She's balanced and functional, the kind that develops into a productive cow. Homozygous black and homozygous polled.

# Open Heifers



**Bramlets Beautiful Z223**  
Dam of Lot 15

lot 15



**CLRWTR Beauty H317C**  
Dam of Lot 16



lot 16

CLEAR WATER SIMMENTALS

CLEAR WATER SIMMENTALS

15

## CLRWTR *Beautys Ms Fiona* N223C

BD. 2/8/25 • ASA#. 4533923 • Purebred Open Heifer  
Tattoo. N223C • Adj. BW. 78 lbs.

W/C FORT KNOX 609F

sire **W/C BET ON RED 481H**

W/C ANGEL 7113E

HTP SVF IN DEW TIME

dam **BRAMLETS BEAUTIFUL Z223**

HPF MS BEAUTIFUL S054

16

## CLRWTR *Beautys Ms Agnes* N317A

BD. 1/1/25 • ASA#. 4533919 • 3/4 Simmental Open Heifer  
Tattoo. N317A • Adj. BW. 94 lbs. Adj. WW. 640 lbs.

KRJ DAKOTA OUTLAW G974

sire **NEXT LEVEL**

KRDL CAEDENCE C37

COLBURN PRIMO 5153

dam **CLRWTR BEAUTY H317C**

BRAMLETS BEAUTIFUL A317

CE	BW	WW	YW	MCE	Milk	MWW	Marb	REA	API
10.8	-1.1	67.8	99.3	3.7	18.5	52.2	-0.03	0.83	122.9

CE	BW	WW	YW	MCE	Milk	MWW	Marb	REA	API
9.7	4.0	74.9	110.0	2.2	18.5	56.4	-0.06	0.89	102.6

This Bet On Red daughter stems from the consistent producer Bramlets Beautiful Z223, a cow family that simply never misses. Time and again, Z223 has generated high sellers and show champions, with progeny winning at the highest levels. Years back, Tim Schaeffer campaigned a heifer from this line that dominated nearly every show she entered. More recently, S&S TSSC Limitless 041H—a \$60,000 half-interest bull and American Royal Champion—traces to this same family. This striking baldy carries generations of proven winners behind her. The Bet On Red influence only adds to her value, bringing a record of both phenotype and predictability. She's bred with the genetic merit, style, and earning potential to be a cornerstone female. Don't let this one slip by—the kind that builds programs and pays dividends for years to come.

Agnes is a daughter of one of the top sellers in the 2020 Clear Choice Sale, purchased by Drew Vehslage, who went on to show her successfully at the North American, Hoosier Beef Congress, AJSA shows, State Fair, and more. Beauty H317C was consistently a top contender, and her progeny have also excelled in both the show ring and sales. One son was named Champion Bull and was the high seller at the KY Beef Expo. Drew's \$8,500 investment paid off quickly. N317A has the look of a backdrop female and the lineage to back it all the way to Sheza Star. Her cow family has done great things for Bramlet, Tim Schaeffer, and Clint Main, consistently producing dollars. Sired by Next Level, she combines show quality with long-term breeding value. A Beauty daughter is a smart addition for competitive showing now and donor potential later.

# Right to Love Family



**S/P True Love F789**  
**Dam of Lots 17, 18, 19 and 20**

BESHEARS SIMMENTALS



## BESH *Ms True Love* N20E

BD. 2/18/25 • ASA#. 4560645 • Purebred Open Heifer  
 Tattoo. N20E • Adj. BW. 92 lbs.

TL REVENANT 35

*sire* **REVELATION 2K**

RIED BANDED MAE

W/C EXECUTIVE ORDER 8543B

*dam* **S/P TRUE LOVE F789**

HPF RIGHT TO LOVE 283C

CE	BW	WW	YW	MCE	Milk	MWW	Marb	REA	API
10.6	1.2	80.1	115.2	4.1	19.1	59.0	0.13	0.77	113.4

If there's one Kenny hates to see leave, it's Besh Ms True Love. Revelation has added the "wow" factor here. N20E is deep, wide, bold sprung, and roomy on a big, sound foot. She's heavy boned, good jointed, and flexible on the move — just like her dam, S/P True Love, who herself is stout, attractive, and productive. Her dam True Love F789 has worked well in other programs. Revelation 2K, her sire, was a \$200,000 high seller owned by Schaeffer and Bloomberg. This female has a short but already impressive history, and she's about to make her mark. Don't miss the chance to be part of her story.

BESHEARS SIMMENTALS



## BESH *Ms True Love* NKA4

BD. 4/1/25 • ASA#. 4566151 • Purebred Open Heifer  
 Tattoo. NKA4 • Adj. BW. 67 lbs.

EGL FIRESTEEL 103F

*sire* **WHF/JS/CCS WOODFORD J001**

WHF SUMMER 365C

W/C EXECUTIVE ORDER 8543B

*dam* **S/P TRUE LOVE F789**

HPF RIGHT TO LOVE 283C

CE	BW	WW	YW	MCE	Milk	MWW	Marb	REA	API
12.9	0.7	86.1	126.8	5.0	20.2	63.1	0.33	0.68	141.4

This True Love daughter is a wide-made, level-hipped female that will quickly develop into an impressive and highly functional cow. Her pedigree is stacked with proven greats—Woodford, Summer, Andie, 8543U, Right to Love, and PCC Queen Valentine. These cow families have stood the test of time with staying power and legendary status. NKA4 is good-footed, stout-boned, and deep through her center body, combining maternal strength with long-term productivity.



**Lot 17**



**Lot 18**

# Right to Love Family

BESHEARS SIMMENTALS

19

## BESH *Ms Proven Love* N789

BD. 4/2/25 • ASA#. 4566149 • Purebred Open Heifer  
Tattoo. N789 • Adj. BW. 69 lbs.

CCS/WHF OL`SON 48F  
*sire* **WHF POINT PROVEN H45**  
WHF DELILAH 45D  
W/C EXECUTIVE ORDER 8543B  
*dam* **S/P TRUE LOVE F789**  
HPF RIGHT TO LOVE 283C

CE	BW	WW	YW	MCE	Milk	MWW	Marb	REA	API
14.5	-1.9	82.4	124.3	7.8	20.7	61.7	0.28	0.79	138.7

Here's a female that blends two of Kentucky's most proven cow families. On the bottom side, RP/MP Right To Love, shown successfully by junior Morgan Phillips and still one of the most influential donors in the breed. On the top side, WHF Black Jasmine 240J, shown by AJSA junior Paul Allen, who was crowned champion female at the 2001 AJSA Nationals in Ft. Collins. N789 carries Star Power in every generation—predictable, proven, and backed by pedigrees that consistently deliver in both the show ring and the pasture.



Lot 19

20

## BESH *Ms Truly* NH17

BD. 5/1/25 • ASA#. 4566153 • Purebred Open Heifer  
Tattoo. NH17 • Adj. BW. 80 lbs.

EGL FIRESTEEL 103F  
*sire* **WHF/JS/CCS WOODFORD J001**  
WHF SUMMER 365C  
W/C EXECUTIVE ORDER 8543B  
*dam* **S/P TRUE LOVE F789**  
HPF RIGHT TO LOVE 283C

CE	BW	WW	YW	MCE	Milk	MWW	Marb	REA	API
12.9	0.7	86.1	126.8	5.0	20.2	63.1	0.33	0.68	141.4

This year we've decided to offer just a few April and May heifers—ideal for younger juniors or families looking for a project to show at the Spotlight on the 4th Saturday in April. We're proud of our donor program, and NH17 represents it well, being backed by Andie, True Love, Dakota D13, and more. Don't overlook this top-notch female—she has the quality, presence, and potential to stand out. Be sure to find her in the pens, or stop by the farm ahead of sale week. Just give me a call—I'll even buy lunch.



Lot 20

CLEAR WATER SIMMENTALS

21

## CLRWTR *Ms Chrimson Love* N320F

BD. 2/25/25 • ASA#. 4533916 • Purebred Open Heifer  
Tattoo. N320F • Adj. BW. 88 lbs. Adj. WW. 464 lbs.

W/C BANKROLL 811D  
*sire* **W/C RED BIRD 269J**  
W/C MISS ANGEL 2870Z  
CCR COWBOY CUT 5048Z  
*dam* **HPF RIGHT TO LOVE B320**  
RP/MP RIGHT TO LOVE 015U

CE	BW	WW	YW	MCE	Milk	MWW	Marb	REA	API
14.4	0.9	71.6	109.9	8.1	20.1	55.8	0.21	0.82	127.8

We often pick animals apart, but this one comes close to perfection. To be honest, this female was originally staying at Clearwater. Just a week before pictures, I found myself asking: What are we striving for in the purebred seedstock business in Milan, Indiana? The answer is simple—producing and offering the very best. We're prouder than ever to present this elite group of females, including N320F. She is out of the exceptional donor Right to Love B320 and sired by Cowboy Cut. On the top side, W/C Red Bird did his part to deliver the strength in these genetics.



Lot 21



HPF Right to Love B320  
Dam of Lot 21

# Open Heifers

CLEAR WATER SIMMENTALS

22

CLRWTR *Ms Barbara* N91

BD. 3/3/25 • ASA#. 4533917 • Purebred Open Heifer  
Tattoo. N91 • Adj. BW. 82 lbs. Adj. WW. 504 lbs.

W/C BANKROLL 811D

sire **WCCO KNOCKIN BOOTS 305J**

CLAC BLACK SATIN 378F

CDI MAINLINE 265D

dam **2E GIGGLES 91G**

RUBY SWC BIANCA B450

CE	BW	WW	YW	MCE	Milk	MWW	Marb	REA	API
9.8	1.9	81.7	124.4	5.0	26.6	67.4	-0.13	1.19	108.3

N91 offers expressive muscle, power, bone, and structural integrity, with a wide top and overall completeness. Through her front third, Barbara is sleek and feminine, featuring a long, tidy neck and a refined head. This March female doesn't have to pose—the look is always there. She's sired by Knockin Boots, the high seller at the Ohio Beef Expo and leading Stager Cattle herd sire, and out of Black Satin 378F, the Woodard donor and direct daughter of the legendary JS Black Satin. Barbara N91 is bred for success—she's built to stand out in the show ring and, even more importantly, deliver consistency and value in production.

BESHEARS SIMMENTALS

23

BESH/B C R *Ms Dreamy* N2430

BD. 5/9/25 • ASA#. 4566148 • Purebred Open Heifer  
Tattoo. N2430 • Adj. BW. 74 lbs.

RP/BCR EMINENCE H005

sire **B C R DIALED IN L111**

DWC BECCA 35F

RECKONING 711F

dam **JSUL DREAMY 2430K**

BAILEY`S PROFIT`S DREAM

CE	BW	WW	YW	MCE	Milk	MWW	Marb	REA	API
6.8	2.3	72.3	105.1	2.4	16.2	52.3	0.17	0.94	108.9

N2430 is what most would call a "killer look" kind of heifer—long, thin-necked, sleek through her head and jaw, with her neck tying in high out of the shoulder for that extra style. She's the youngest female in the offering but carries as much future as any. The Bailey Dream cow family has produced numerous champions for Sara Sullivan and others, and that track record speaks for itself. Look past sale day and project her forward—she'll shine at the Spotlight or AJSA shows. Backed by sires like Dialed In and Eminence, this one has the pedigree and design to make her mark.



Lot 22



WCCO Knockin Boots 305J  
Sire of Lot 22



Lot 23

THE CLEAR CHOICE  
**spotlight**  
Customer Junior Show

April 25, 2026 • Milan, IN

CLEAR CHOICE SALE FACILITY

FOLLOWING THE CLEAR CHOICE CUSTOMER SALE

**\$3,000 GRAND CHAMPION**

**\$1,500 RESERVE CHAMPION**

This show is NO FIT and you will be showing off of your trailer. No barn space will be available due to the sale. Ample parking space is available. Monetary award and sale credit will be awarded to every animal shown. Youth ages 8 through 21 as of January 1, 2026 are eligible, animal must be registered in the junior's name at purchase.

**Females must be purchased from a 2025-2026 Clear Choice Sale.**

ASK FOR MORE DETAILS • ENTRIES OPEN SPRING 2025

FOR INFORMATION ON ENTRIES PLEASE CONTACT: HOLLI HATMAKER • 859-707-5248 • HOLLI@DPSALESLLC.COM

# Bred Heifers



lot 24



**GCC Night Owl 3104L**  
Service Sire of Lot 24 and Others



**OMF/DK Josie 31J**  
Dam of Lot 25



lot 25

CLEAR WATER SIMMENTALS

CLEAR WATER SIMMENTALS

24

## CLRWTR *Shady* M5105F

BD. 2/8/24 • ASA#. 4421251 • Purebred Bred Heifer  
Tattoo. M5105F • Adj. BW. 71 lbs. Adj. WW. 603 lbs.

W/C RELENTLESS 32C

sire **RECKONING 711F**

RWA KRISHA-ET

CCR COWBOY CUT 5048Z

dam **CLRWTR SHADES C5105C**

CLRWTR JOYS SHADES

25

## CLRWTR *Josie* M31K

BD. 3/7/24 • ASA#. 4421242 • 3/4 Simmental Bred Heifer  
Tattoo. M31K • Adj. BW. 99 lbs. Adj. WW. 663 lbs.

MUSGRAVE SKY HIGH 1535

sire **DMCC STOCKMAN 124J**

JASS BLING 01B

BRIDLE BIT BEST MAN F839

dam **OMF/DK JOSIE 31J**

OMF/DK GINGER G50

CE	BW	WW	YW	MCE	Milk	MWW	Marb	REA	API
9.1	2.2	72.8	99.1	4.9	17.6	54.2	0.10	0.79	121.0

**PB SM Calf in Utero, Projected EPDs**

13.8	0.1	72.4	104.9	7.3	15.3	51.5	0.33	0.90	145.3
------	-----	------	-------	-----	------	------	------	------	-------

Al'd to GCC Night Owl 3104L (ASA# 4284092) on 5/28/25. PE to ES Five Star Limitless (ASA# 4186927) from 5/31/25 to 7/28/25. The legendary 5105R and her family continue to shine as one of our most influential cow lines. Though no longer in production, she has left a lasting legacy with over 100 progeny registered at Clearwater and an undeniable impact across the breed. Her daughters are working in leading programs, many as featured donors, while her sons remain highly sought after by bull buyers. Maverick campaigned several 5105R descendants to banner wins, and this year's offering is further proof of her influence. This Reckoning daughter selling is one of the best yet—a female with the quality to headline any program. She sells Al'd to the Denver Champion, GCC Night Owl.

CE	BW	WW	YW	MCE	Milk	MWW	Marb	REA	API
13.2	0.9	79.4	122.3	4.6	18.5	57.3	0.31	0.82	126.6

**PB SM Calf in Utero, Projected EPDs**

12.9	0.4	82.0	120.4	6.4	25.1	65.6	0.33	0.71	139.9
------	-----	------	-------	-----	------	------	------	------	-------

Al'd to THSF Loverboy (ASA# 2983443) on 4/3/25. PE to ES Five Star Limitless (ASA# 4186927) from 5/31/25 to 7/28/25. OMF DK Josie 31J was a wise purchase from Oak Meadow, and her progeny have made us proud. We sold three daughters in last year's sale to Evan Fuller, Chris McBurney, and Humphries Farm. This Stockman daughter is another strong representative of the line — balanced, correct, and red with a striking presence. Stockman progeny have been consistently good for us, with bulls topping sales and another set coming in 2026. This Josie has balanced EPDs across the board and sells Al'd to Lover Boy, the No. 2 most-used sire in the breed and still relevant over 10 years later.

# Bred Heifers

CLEAR WATER SIMMENTALS & HTP SIMMENTALS

26

## CLRWTR HTP *Looking Good* M457

BD. 1/16/24 • ASA#. 4559883 • 3/4 Simmental Bred Heifer  
Tattoo. M457 • Adj. BW. 82 lbs. Adj. WW. 571 lbs.

W/C RELENTLESS 32C

sire **RECKONING 711F**

RWA KRISHA-ET

HILB ORACLE C033R

dam **CLRWTR HTP LOOKING GOOD**

CLRWTR HTP LOOKING GOOD

CE	BW	WW	YW	MCE	Milk	MWW	Marb	REA	API
5.6	3.8	78.5	107.1	1.8	20.7	60.1	0.12	0.66	96.2

**PB SM Calf in Utero, Projected EPDs**

12.1	1.0	75.2	109.1	5.8	16.8	54.4	0.34	0.82	135.2
------	-----	------	-------	-----	------	------	------	------	-------

**AI'd to GCC Night Owl 3104L (ASA# 4284092) on 3/28/25. PE to ES Five Star Limitless (ASA# 4186927) from 5/31/25 to 7/28/25.** The bred heifer division is loaded, and M457 is at the very top. Her pedigree runs deep: 4 generations back is one of the best Angus cows we've ever seen — a Duff Basic Instinct x New Look that was flushed with great success. Every female and bull since has been strong, and every generation has produced flush-worthy cattle. M457 is sired by Reckoning x Looking Good (an Oracle x Milestone x Duff Basic Instinct x Duff New Look). The 457 line has made its mark — embryos sold to Aaron Barnhill last year, and females from this family have brought \$5,000–\$10,000. Highlights include a Knic Overpeck Supreme Champion for Luke Gilbert in 2019 and a \$8,800 pair in 2023 to Will Rincker. Looking Good is the real deal. As a bred, she's already impressive — and when she calves to Night Owl, she'll be a knockout. Seller retains six embryos for a future flush.

BESHEARS SIMMENTALS

27

## BESH *Ms True Love* MF789

BD. 1/1/24 • ASA#. 4412789 • Purebred Bred Heifer  
Tattoo. MF789 • Adj. BW. 68 lbs.

LLSF VANTAGE POINT F398

sire **CLRWTR CLEAR ADVANTAGE H4G**

WS MISS SUGAR C4

W/C EXECUTIVE ORDER 8543B

dam **S/P TRUE LOVE F789**

HPF RIGHT TO LOVE 283C

CE	BW	WW	YW	MCE	Milk	MWW	Marb	REA	API
12.8	-0.1	87.7	133.2	5.5	23.9	67.6	0.40	0.79	139.1

**PB SM Calf in Utero, EPDs available sale day**

**AI'd to KBHR Summit L100 (ASA# 4225776) on 2/9/25. Confirmed bred. Due 11/19/25.** MF789 is a really impressive, soggy brood cow in the making. While the Clear Advantage calves have turned heads as both heifers and bulls, we believe his long-term legacy may be his highly maternal daughters. This female brings that legacy forward—combining a royal pedigree with a phenotype that reads like a dream. She's the kind that will make her mark in any herd. Bred safe to KBHR Summit, her future is as promising as they come.

BESHEARS SIMMENTALS

28

## BESH/KRI *Ms Sara*

BD. 2/15/24 • ASA#. 4474938 • Purebred Bred Heifer  
Tattoo. MD24 • Adj. BW. 81 lbs.

MR CCF 20-20

sire **B C R PERFECT VISION**

HSF CALLIE D613

W/C BF INNOCENT MAN

dam **BESH/CRF MS SARA D24**

SOSF EBONY'S BLACK SILK

CE	BW	WW	YW	MCE	Milk	MWW	Marb	REA	API
12.4	-0.3	67.5	100.6	5.4	17.0	50.9	0.14	0.94	137.0

**PB SM Calf in Utero, Projected EPDs**

15.3	-1.3	77.1	117.7	7.2	23.2	61.8	0.46	0.87	156.6
------	------	------	-------	-----	------	------	------	------	-------

**AI'd to ES Five Star Limitless (ASA# 4186927) on 5/2/25. Confirmed bred. Due 2/2/26.** Smooth-made and well-balanced are two terms that quickly come to mind when analyzing this impressive bred heifer. She sells safe to the exciting Limitless!



Lot 26



CLRWTR HTP Looking Good  
Maternal Granddam of Lot 26



Lot 27



Lot 28

# Bred Heifers

BESHEARS SIMMENTALS

29

## BESH/KRI *Ms Ethel* MJ20

BD. 2/25/24 • ASA#. 4474939 • Purebred Bred Heifer  
Tattoo. MJ20 • Adj. BW. 87 lbs.

EGL FIRESTEEL 103F  
*sire* **WHF/JS/CCS WOODFORD J001**  
WHF SUMMER 365C  
OBCC CMFM DEPLORABULL D148  
*dam* **BESH MS ETHEL J20**  
BESH ETHEL W24



Lot 29

CE	BW	WW	YW	MCE	Milk	MWW	Marb	REA	API
10.2	1.9	71.6	106.4	3.9	20.8	56.5	0.20	0.70	129.7
<b>PB SM Calf in Utero, Projected EPDs</b>									
15.3	-1.3	63.4	92.8	7.1	18.2	50.0	0.40	0.90	152.0

**PE to BRRN Imperial M86 (ASA# 4337111) from 5/7/25 to 6/11/25. Confirmed bred.** This bred female is sired by an Imperial son. He has a breed-leading EPD profile, ranking in the top 1% for CE at 19, top 1% for BW at -4, and top 5% for API at 175. In fact, he has nine EPDs in the top 15% or better. Naturally, her calf is expected to inherit a strong EPD profile as well. The name "Ethel" has appeared in past sales. This heifer is complete, well-designed, and balanced in style—you will appreciate her on sale day.

BESHEARS SIMMENTALS

30

## BESH *Bull* M67

BD. 1/1/24 • ASA#. 4412800 • Purebred Bred Heifer  
Tattoo. M67 • Adj. BW. 88 lbs.

CCS/WHF OL` SON 48F  
*sire* **WHF POINT PROVEN H45**  
WHF DELILAH 45D  
RGRS SRG TWO STEP 20Z ET  
*dam* **HPF MISSY C068**  
WLE MISSY U409



Lot 30

CE	BW	WW	YW	MCE	Milk	MWW	Marb	REA	API
12.2	-0.3	67.8	82.4	6.4	19.5	53.3	0.14	0.68	121.5
<b>PB SM Calf in Utero, Projected EPDs</b>									
13.5	-0.5	76.3	104.3	6.8	22.7	60.7	0.31	0.73	134.8

**AI'd to CLRWTR Clear Advantage (ASA# 3858588) on 1/31/25. Sexed female semen, confirmed bred. Due 11/10/25.** A powerfully constructed purebred female that stands out easily in the pens. She's backed by one of our most consistent and fertile donors, C068. Point Proven continues to stamp his progeny with that sought-after eye appeal. Bred safe to SEXED semen.

CLEAR WATER SIMMENTALS



HPF Missy C068  
Dam of Lot 30

31

## CLRWTR *Love Bug* M422A

BD. 1/3/24 • ASA#. 4421186 • 3/4 Simmental Bred Heifer  
Tattoo. M422A • Adj. BW. 106 lbs. Adj. WW. 678 lbs.

MUSGRAVE SKY HIGH 1535  
*sire* **DMCC STOCKMAN 124J**  
JASS BLING 01B  
SC PAY THE PRICE C11  
*dam* **CLRWTR LOVE LOTS G422B**  
HPF LOTSA LOVE B422



Lot 31

CE	BW	WW	YW	MCE	Milk	MWW	Marb	REA	API
5.4	5.2	86.2	125.8	1.9	25.1	67.3	0.30	0.78	107.6
<b>PB SM Calf in Utero, Projected EPDs</b>									
8.4	2.7	82.3	121.6	4.4	28.4	69.0	0.23	0.87	125.7

**AI'd to WINC All Right (ASA# 4100635) on 4/3/25. PE to ES Five Star Limitless (ASA# 4186927) from 5/31/25 to 7/28/25.** The baldie "Bug" female is one you'll notice sale day. As we've said, the Stockman progeny bring extra gas, bone, and performance. This female was impressive as a calf and hasn't changed. She's sharp fronted, with her neck coming high out of her shoulder, always carrying that alert look she's likely to pass to her offspring. She sells safe in calf to WINC All Right, the Windy Creek bull now owned by Griswold. Bug's dam, Lotsa Love, sold for \$23,000 in the 2019 sale to KD Simmental in Iowa. Good things will happen here.



HPF Lotsa Love B422  
Maternal Granddam of Lot 31

# Bred Heifers

CLEAR WATER SIMMENTALS



Lot 32

32

## CLRWTR *Ms Lovely*

BD. 1/4/24 • ASA# 4421216 • Purebred Bred Heifer  
Tattoo. M57 • Adj. BW. 98 lbs. Adj. WW. 750 lbs.

LLSF VANTAGE POINT F398

*sire* CLRWTR CLEAR ADVANTAGE H4G  
WS MISS SUGAR C4

JSUL SOMETHING ABOUT MARY 8421

*dam* CLRWTR MS LOVELY K57A  
THSF MISS LOVELY B57

CE	BW	WW	YW	MCE	Milk	MWW	Marb	REA	API
10.4	3.8	101.7	153.0	4.2	25.3	76.1	0.27	0.99	131.7
<b>PB SM Calf in Utero, Projected EPDs</b>									
14.5	1.0	86.8	131.9	7.0	19.6	62.9	0.41	0.99	149.5

AI'd to GCC Night Owl 3104L (ASA# 4284092) on 3/28/25. PE to ES Five Star Limitless (ASA# 4186927) from 5/31/25 to 7/28/25. Sired by Clear Advantage, the \$30,000 high seller in the 2023 bull sale purchased by Greg Drebes, Prairie View, and Jesse Range, Lovely represents elite genetics. Clear Advantage offers quality, an excellent EPD profile, and a pedigree stacked with Vantage Point and the Sugar donor. His progeny are already excelling across programs. On the bottom side, you'll find the proven cow makers Sam, Freedom, Built Right, and Right To Love. Lovely sells AI'd to Night Owl, the Denver Champion.

CLEAR WATER SIMMENTALS



Lot 33

33

## CLRWTR *Jewel* M760

BD. 1/5/24 • ASA# 4421212 • Purebred Bred Heifer  
Tattoo. M760 • Adj. BW. 66 lbs. Adj. WW. 643 lbs.

THSF LOVER BOY B33

*sire* ROCKIN H CAPTIVATE J75  
ROCKIN H MS.CAROLINA  
W/C PINNACLE E80

*dam* CLRWTR JEWEL K760A  
EKHCC RED JEWEL 760

CE	BW	WW	YW	MCE	Milk	MWW	Marb	REA	API
14.7	-0.9	81.1	120.8	8.6	29.1	69.6	0.03	1.00	135.5
<b>PB SM Calf in Utero, Projected EPDs</b>									
13.1	-0.4	79.8	118.8	8.0	30.9	70.7	0.09	1.01	133.4

AI'd to WINC All Right (ASA# 4100635) on 3/27/25. PE to ES Five Star Limitless (ASA# 4186927) from 5/31/25 to 7/28/25. Another eye-catching baldy female, M760 is backed by the great Red Jewel on the bottom side and the calving ease Denver Champion, Lover Boy, on the top. She's the kind that blends pedigree, style, and function. We're eager to see her All Right calf this spring—be sure to keep us posted!

CLEAR WATER SIMMENTALS



Lot 34



CLRWTR Sugar H4F  
Dam of Lot 34

34

## CLRWTR *Ms Sugar* M4B

BD. 1/5/24 • ASA# 4421214 • 1/2 Simmental Bred Heifer  
Tattoo. M4B • Adj. BW. 66 lbs. Adj. WW. 558 lbs.

S&R STABILITY J824

*sire* BLACK ACE DOUBLE RUN 4/8  
BLACK ACE NEXT UP 763E ET  
LLSF VANTAGE POINT F398

*dam* CLRWTR SUGAR H4F  
WS MISS SUGAR C4

CE	BW	WW	YW	MCE	Milk	MWW	Marb	REA	API
14.4	-1.1	75.6	117.7	7.4	26.2	64.1	0.47	0.58	129.1
<b>3/4 SM 1/4 AN Calf in Utero, Projected EPDs</b>									
14.7	-1.6	82.6	126.6	8.4	25.0	66.3	0.33	0.77	134.0

AI'd to MR SR 71 Right Now E1538 (ASA# 3325668) on 4/5/25. PE to ES Five Star Limitless (ASA# 4186927) from 5/31/25 to 7/28/25. M4B is a daughter of the Sugar donor M4F and the Angus sire Black Ace Double Run. This SimAngus female has a strong and balanced genetic profile, with consistent EPDs across the board. She sells bred to Right Now, a Werning sire whose sons have topped sales in recent years. Right Now ranks in the top 20% for 11 traits, offering calving ease combined with high weaning and yearling growth. He is homozygous polled and homozygous black.

# Bred Heifers

CLEAR WATER SIMMENTALS

35

## CLRWTR *Soft Touch* M380

BD. 1/6/24 • ASA#. 4421245 • Purebred Bred Heifer  
Tattoo. M380 • Adj. BW. 78 lbs. Adj. WW. 654 lbs.

IR IMPERIAL D948

sire **MR SR RED OCTOBER G1761**

MISS SR E1761

TMAS CAN'T TOUCH THIS 8531F

dam **CLRWTR TOUCH OF BLAZE K380**

BWL BLAZE OF JEWEL 38F



Lot 35



BWL Blaze of Jewel 38F  
Maternal Granddam of Lot 35

CE	BW	WW	YW	MCE	Milk	MWW	Marb	REA	API
12.1	0.7	82.0	122.5	4.3	18.6	59.5	0.32	1.20	147.2

**PB SM Calf in Utero, Projected EPDs**

15.3	-0.6	76.8	116.6	7.1	16.6	54.9	0.43	1.10	157.2
------	------	------	-------	-----	------	------	------	------	-------

AI'd to GCC Night Owl 3104L (ASA# 4284092) on 5/29/25. PE to ES Five Star Limitless (ASA# 4186927) from 5/31/25 to 7/28/25. Looking for a big, powerful female loaded with pedigree and performance? She's a direct descendant of the great Red Jewel, adding even more value to her credentials. We're excited to see these Night Owl calves hit the ground this spring!

CLEAR WATER SIMMENTALS

36

## CLRWTR *Rollin In Love* M334

BD. 1/12/24 • ASA#. 4421219 • Purebred Bred Heifer  
Tattoo. M334 • Adj. BW. 60 lbs. Adj. WW. 556 lbs.

HPF QUANTUM LEAP Z952

sire **WLE COPACETIC E02**

CMFM JOY 02ZB

W/C BANKROLL 811D

dam **B&K/IVS ROLLING IN LOVE 334G**

HPF RIGHT TO LOVE Z338



Lot 36



HPF Right to Love Z338  
Maternal Granddam of Lot 36

CE	BW	WW	YW	MCE	Milk	MWW	Marb	REA	API
15.5	-0.7	73.3	106.2	6.7	11.4	48.0	0.11	0.90	120.2

**PB SM Calf in Utero, Projected EPDs**

15.1	-1.4	81.5	123.7	7.9	18.0	58.7	0.15	1.05	130.1
------	------	------	-------	-----	------	------	------	------	-------

AI'd to MR SR 71 Right Now E1538 (ASA# 3325668) on 5/1/25. PE to ES Five Star Limitless (ASA# 4186927) from 5/31/25 to 7/28/25. As her pedigree suggests (Copa-cetic x Bankroll x Duracell x Right To Love), Rollin in Love puts it all together. She's easy to find with her soggy middle, overall capacity, heavy bone, and sound build. This square-hipped female has the look of a donor cow in the making. She sells AI'd to the proven sire Right Now.

CLEAR WATER SIMMENTALS

37

## CLRWTR *Unlimited* M5105C

BD. 1/16/24 • ASA#. 4421249 • Purebred Bred Heifer  
Tattoo. M5105C • Adj. BW. 70 lbs. Adj. WW. 596 lbs.

LLSF VANTAGE POINT F398

sire **CLRWTR CLEAR ADVANTAGE H4G**

WS MISS SUGAR C4

GEFF COUNTY O

dam **CLRWTR UNLIMITED J5105K**

CLRWTR JOYS UNLIMITED



Lot 37

CE	BW	WW	YW	MCE	Milk	MWW	Marb	REA	API
12.0	0.4	80.3	122.1	5.8	23.1	63.2	0.22	0.88	130.3

**PB SM Calf in Utero, Projected EPDs**

12.2	0.9	90.2	142.3	6.8	23.1	68.1	0.51	0.89	153.4
------	-----	------	-------	-----	------	------	------	------	-------

AI'd to SCHOOLEY Krown (ASA# 4115546) on 4/4/25. PE to ES Five Star Limitless (ASA# 4186927) from 5/31/25 to 7/28/25. We're really seeing and appreciating the maternal power of Clear Advantage daughters as they enter production, and this female is no exception. She combines functionality, balance, and eye appeal in a package that will make a lasting impact. The kind you can build around, she will be a valuable addition to any herd. To top it off, she sells AI'd to the proven calving ease sire, Schooley Krown.

# Bred Heifers

CLEAR WATER SIMMENTALS



Lot 38

38

## CLRWTR *Andie* M365

BD. 1/16/24 • ASA#. 4421193 • 1/2 Simmental Bred Heifer  
Tattoo. M365 • Adj. BW. 93 lbs. Adj. WW. 649 lbs.

S&R STABILITY J824

*sire* **BLACK ACE DOUBLE RUN 4/8**

BLACK ACE NEXT UP 763E ET

CDI INNOVATOR 325D

*dam* **CLRWTR ANDIE G365**

WHF ANDIE 365A

CE	BW	WW	YW	MCE	Milk	MWW	Marb	REA	API
9.4	3.3	92.1	143.8	5.3	26.6	72.5	0.40	0.74	124.3

**3/4 SM 1/4 AN Calf in Utero, Projected EPDs**

13.9	0.5	89.3	136.7	7.3	28.1	72.7	0.60	0.66	149.6
------	-----	------	-------	-----	------	------	------	------	-------

**Natural service observed to ES Five Star Limitless (ASA# 4186927) on 6/11/25.**

**PE to ES Five Star Limitless (ASA# 4186927) from 5/31/25 to 7/28/25.** M365 is a cow that will work efficiently and is ready for production. This Andie daughter is complete in her design — deep flanked with plenty of body and capacity. If you're looking for a brood cow with a bright future, take a close look at this one by Black Ace Double Run. A Black Ace Double Run heifer brought \$9,000 in last year's sale. Functional and profitable, this bred sells safe in calf to Limitless.

CLEAR WATER SIMMENTALS



Lot 39

39

## CLRWTR *Touch This* M4E

BD. 1/20/24 • ASA#. 4421220 • Purebred Bred Heifer  
Tattoo. M4E • Adj. BW. 94 lbs. Adj. WW. 588 lbs.

TJ TEARDROP 783F

*sire* **TJ RAGE 437H**

TJ 92C

TMAS CAN`T TOUCH THIS 8531F

*dam* **CLRWTR SUGAR K4D**

CLRWTR SUGA H4C

CE	BW	WW	YW	MCE	Milk	MWW	Marb	REA	API
8.1	4.3	90.2	135.9	3.7	23.6	68.6	0.28	0.60	136.3

**PB SM Calf in Utero, Projected EPDs**

13.2	1.1	88.5	135.3	6.4	26.6	70.7	0.53	0.68	155.7
------	-----	------	-------	-----	------	------	------	------	-------

**AI'd to ES Five Star Limitless (ASA# 4186927) on 4/22/25. PE to ES Five Star**

**Limitless (ASA# 4186927) from 5/31/25 to 7/28/25.** M4E is a spitting image of her half-sister M4F "Red Bird." She's developing a tidy udder and will carry the same maternal strength the Sugar cow family is known for. Sired by our herd sire TJ Rage, she represents a line we've come to value — we have several productive Rage daughters in the herd. M4E ranks in the top 15% for WW and the top 20% for YW. She sells bred to Limitless, who will only enhance her already solid EPD profile. A bred female worth adding to your list.

CLEAR WATER SIMMENTALS



Lot 40

40

## CLRWTR *So Sweet* M121

BD. 1/31/24 • ASA#. 4421478 • Purebred Bred Heifer  
Tattoo. M121 • Adj. BW. 78 lbs. Adj. WW. 537 lbs.

CCR ANCHOR 9071B

*sire* **LLSF VANTAGE POINT F398**

HPF RITE 2 LUV 398D

JSUL SOMETHING ABOUT MARY 8421

*dam* **TJSC SO SWEET 121K**

TJSC SO SWEET 104X

CE	BW	WW	YW	MCE	Milk	MWW	Marb	REA	API
12.7	0.9	70.2	105.7	4.0	17.7	52.7	0.19	0.81	114.3

**PB SM Calf in Utero, Projected EPDs**

15.6	-0.5	70.9	108.1	6.9	15.8	51.2	0.38	0.91	140.9
------	------	------	-------	-----	------	------	------	------	-------

**AI'd to GCC Night Owl 3104L (ASA# 4284092) on 5/28/25. PE to ES Five Star Limitless (ASA# 4186927) from 5/31/25 to 7/28/25.** The "So Sweet" cow family continues to shine for Jones Show Cattle, proving themselves with marketability and success in both seedstock and show cattle programs. With high sellers and champions already in the record books, the consistency is clear. M121, a Vantage Point x Sam, is deep bodied, bold ribbed, and attractive. She sells AI'd to the Denver Champion Night Owl.

# Bred Heifers

CLEAR WATER SIMMENTALS

41

## CLRWTR *Sugar* M4F

BD. 2/3/24 • ASA# 4421190 • Purebred Bred Heifer  
Tattoo. M4F • Adj. BW. 71 lbs. Adj. WW. 652 lbs.

W/C BANKROLL 811D

sire **W/C RED BIRD 269J**

W/C MISS ANGEL 2870Z

LLSF VANTAGE POINT F398

dam **CLRWTR SUGAR H4F**

WS MISS SUGAR C4



Lot 41

CE	BW	WW	YW	MCE	Milk	MWW	Marb	REA	API
15.5	-0.3	74.3	107.8	7.2	22.4	59.5	0.21	0.97	126.6

**PB SM Calf in Utero, Projected EPDs**

13.5	-0.1	76.5	112.5	7.2	27.1	65.3	0.18	1.01	129.1
------	------	------	-------	-----	------	------	------	------	-------

AI'd to WINC All Right (ASA# 4100635) on 4/17/25. PE to ES Five Star Limitless (ASA# 4186927) from 5/31/25 to 7/28/25. The Sugar progeny, both bulls and females, have been standouts in our program. After purchasing two flushes from the Sugar donor, we've seen consistent success — with progeny landing in programs and topping both customer sales and our own. This powerful female combines convenience traits including soundness, structure, easy fleshing ability, docility, and will develop an excellent udder with ideal teat placement and suspension. If you don't already have a Vantage Point daughter, here's your chance. She sells AI'd to WINC All Right.

CLEAR WATER SIMMENTALS

42

## CLRWTR *Athena* M120

BD. 2/14/24 • ASA# 4393901 • Purebred Bred Heifer  
Tattoo. M120 • Adj. BW. 87 lbs. Adj. WW. 586 lbs.

W/C RELENTLESS 32C

sire **RECKONING 711F**

RWA KRISHA-ET

BCLR INNOVATOR F563

dam **TOST MS TESS 120J**

TOST MS FASHION 805F ET



Lot 42



Black Ace Double Run  
Service Sire of Lot 42

CE	BW	WW	YW	MCE	Milk	MWW	Marb	REA	API
9.3	1.8	73.0	100.4	3.8	16.2	52.8	0.24	0.80	122.5

**1/2 SM 1/2 AN Calf in Utero, Projected EPDs**

11.8	0.5	75.4	109.1	6.1	20.7	58.4	0.40	0.47	120.7
------	-----	------	-------	-----	------	------	------	------	-------

AI'd to Black Ace Double Run (ASA# 4186690) on 4/23/25. PE to ES Five Star Limitless (ASA# 4186927) from 5/31/25 to 7/28/25. Athena's dam was purchased out of the Tostenson Simmental program in South Dakota, and she has done an excellent job. M120 herself is functional, level-hipped, balanced, and correct. She sells AI'd to Black Ace Double Run and could very well produce your next herd bull. Homozygous polled and homozygous black.

CLEAR WATER SIMMENTALS

43

## CLRWTR *Sweetie* M5105G

BD. 2/17/24 • ASA# 4421232 • Purebred Bred Heifer  
Tattoo. M5105G • Adj. BW. 94 lbs. Adj. WW. 639 lbs.

JSU SOMETHING ABOUT MARY 8421

sire **CLRWTR SAM K57B**

THSF MISS LOVELY B57

SAS T101 SWEET MEAT

dam **CLRWTR JOYS SWEETIE**

JF EBONY'S JOY 5105R



Lot 43

CE	BW	WW	YW	MCE	Milk	MWW	Marb	REA	API
8.0	3.6	79.4	117.6	3.6	23.1	62.8	-0.03	0.89	112.7

**PB SM Calf in Utero, Projected EPDs**

10.3	2.5	89.7	139.9	5.7	23.3	68.1	0.38	0.90	144.9
------	-----	------	-------	-----	------	------	------	------	-------

AI'd to SCHOOLEY Krown (ASA# 4115546) on 4/4/25. PE to ES Five Star Limitless (ASA# 4186927) from 5/31/25 to 7/28/25. Faithful genetics here, tracing back to our strong Joy 5105 line. On the top side, she also carries the excellent Lovely B57. A solid purebred that is homozygous polled, she is AI'd to the calving-ease specialist Schooley Krown.

# Bred Heifers

CLEAR WATER SIMMENTALS



Lot 44

44

CLRWTR *Miss Purdue* M224

BD. 3/17/24 • ASA#. 4421182 • 5/8 Simmental Bred Heifer  
Tattoo. M224

W/C DOUBLE DOWN 5014E  
*sire* **WHF/JS/CCS DOUBLE UP G365**  
WHF SUMMER 365C  
CIRCLE M TEJAS  
*dam* **PURDUE MISS D224**  
PURDUE MISS A274

CE	BW	WW	YW	MCE	Milk	MWW	Marb	REA	API
15.4	-1.4	61.1	81.5	8.2	16.5	46.9	0.11	0.54	119.8

**3/4 SM 1/4 AN Calf in Utero, Projected EPDs**

17.0	-1.7	66.5	96.2	8.9	15.2	48.3	0.33	0.77	144.2
------	------	------	------	-----	------	------	------	------	-------

AI'd to GCC Night Owl 3104L (ASA# 4284092) on 5/6/25. PE to ES Five Star Limitless (ASA# 4186927) from 5/31/25 to 7/28/25. Here is a highly functional percentage female that will fit right in and deliver strong returns. Her Tejas dam, from Purdue, is very impressive. She is AI'd to Denver Champion Night Owl.

BESHEARS SIMMENTALS



Lot 45

45

BESH/KRI *Ms Knockout* MGL34

BD. 2/28/24 • ASA#. 4474937 • Purebred Bred Heifer  
Tattoo. MGL34 • Adj. BW. 83 lbs.

TMAS CAN`T TOUCH THIS 8531F  
*sire* **KRI BESH BULL KG24**  
BESH MS ETHEL GW24  
JASS ON THE MARK 69D  
*dam* **BESH MS KNOCKOUT GL34**  
MISS KNOCKOUT 74T

CE	BW	WW	YW	MCE	Milk	MWW	Marb	REA	API
8.8	4.0	71.4	107.4	2.2	18.3	53.8	0.01	0.85	105.7

**PB SM Calf in Utero, Projected EPDs**

14.3	-0.3	63.4	92.9	6.0	17.0	48.8	0.30	1.00	138.9
------	------	------	------	-----	------	------	------	------	-------

PE to BRRN Imperial M86 (ASA# 4337111) from 5/7/26 to 6/11/25. **Confirmed bred.** You know the family—her dam is a half-sister to Serena, and her granddam is Knockout. For many years, the Serena and Knockout donors have commanded attention for their high quality, show-ring success, and as high sellers for Clearwater and Trennepohl. The true success, however, is the customers involved with this family. Many daughters, and even later generations, continue to maintain high production levels. She is a standout bred in our group.

CLEAR WATER SIMMENTALS



Lot 46

46

CLRWTR *Mary* M02

BD. 2/29/24 • ASA#. 4559882 • Purebred Bred Heifer  
Tattoo. M02 • Adj. BW. 79 lbs. Adj. WW. 521 lbs.

CNS DREAM ON L186  
*sire* **WLE UNO MAS X549**  
SHAWNEE MISS 770P  
JSUL SOMETHING ABOUT MARY 8421  
*dam* **BVWF MARY`S FORTUNE K02**  
TNGL MISS FORTUNE E13

CE	BW	WW	YW	MCE	Milk	MWW	Marb	REA	API
11.6	0.2	69.0	97.7	2.8	17.9	52.3	0.28	0.54	132.4

**PB SM Calf in Utero, Projected EPDs**

15.1	-0.9	70.4	104.2	6.3	15.9	51.0	0.42	0.78	150.8
------	------	------	-------	-----	------	------	------	------	-------

AI'd to GCC Night Owl 3104L (ASA# 4284092) on 5/28/25. PE to ES Five Star Limitless (ASA# 4186927) from 5/31/25 to 7/28/25. Sired by Uno Mas, Mary is long bodied, square made, and smooth in her build. These are the kind of breds you could take a trailer load of—consistent, proven, and profitable. With Dream On, 770P, and Sam in the pedigree, you can expect her to produce. She sells AI'd to Night Owl.

# Bred Heifers

NEAL BROTHERS

47

## NB *Sally's Turn* 94M

BD. 3/3/24 • ASA#. 4555891 • Purebred Bred Heifer  
Tattoo. 94M • Adj. BW. 63 lbs. Adj. WW. 608 lbs.

WBF SIGNIFICANT B132

sire **RUBYS TURNPIKE 771E**

RUBYS MISS CLEO 240Z

NB SARGE 44B

dam **NB SALLY ANNE 5E**

NB DREAMBOAT ANNE 5U

CE	BW	WW	YW	MCE	Milk	MWW	Marb	REA	API
11.3	2.1	76.9	123.7	5.6	23.7	62.0	0.08	0.95	126.8

### PB SM Calf in Utero, Projected EPDs

17.1	0.6	82.0	128.3	9.5	25.7	66.6	0.30	1.05	150.3
------	-----	------	-------	-----	------	------	------	------	-------

Bred to Ruby's Start Up 3L105 (ASA# 4370993) on 6/4/25. Due 3/14/26. We've always been impressed with the baldie 94M. She is well-balanced, complete, and sound in her bone and structure. Sally's Turn carries the same pedigree influence as Painted Sally, tracing back to Dreamboat Annie, and she will make a tremendous cow. We invested in Ruby's Start Up with high expectations, and his EPD profile speaks for itself: top 1% CE (23), top 1% MCE, top 1% DOC, top 4% API, top 15% BW, top 25% WW & YW, and top 10% MB & TI. Sally is bred to him and due 3/14/25. We will also have semen available at the sale—bring your tank, you'll like what this bull does for your future progeny.



Lot 47

CLEAR WATER SIMMENTALS

48

## CLRWTR *Macey* M9524

BD. 3/7/24 • ASA#. 4421235 • Purebred Bred Heifer  
Tattoo. M9524 • Adj. BW. 89 lbs. Adj. WW. 618 lbs.

MR SR 71 RIGHT NOW E1538

sire **MR SR MIC DROP G1534**

MISS SR C1534

3C PASQUE 4331B B

dam **3C CROCUS 9524G B**

3C CROCUS X0458 B

CE	BW	WW	YW	MCE	Milk	MWW	Marb	REA	API
8.5	2.5	82.4	135.3	6.9	20.8	61.9	0.19	1.00	149.1

### PB SM Calf in Utero, Projected EPDs

11.6	1.8	82.4	125.3	6.2	19.7	60.8	0.27	0.76	150.0
------	-----	------	-------	-----	------	------	------	------	-------

Al'd to WHF/JS/CCS Woodford J001 (ASA# 4068398) on 4/3/25. PE to ES Five Star Limitless (ASA# 4186927) from 5/31/25 to 7/28/25. M9524 is wide based, bold sprung, and full of dimension, with muscle expression and internal capacity. She's efficient, easy keeping, and bred for longevity. One of the few selling Al'd to Woodford, a bull with increasing demand. The Mic Drop daughters make great cows and bull producers. She also ranks in the top 15% for stayability.



Lot 48

CLEAR WATER SIMMENTALS

49

## CLRWTR *Crocus* M9438

BD. 3/17/24 • ASA#. 4421195 • Purebred Bred Heifer  
Tattoo. M9438 • Adj. BW. 75 lbs. Adj. WW. 562 lbs.

JS SURE BET 4T

sire **FBFS WARSAW 068W**

FBFS SLOW MELT 089S

3C PASQUE 4331B B

dam **3C CROCUS 9438G B**

3C CROCUS 3535A B

CE	BW	WW	YW	MCE	Milk	MWW	Marb	REA	API
12.8	0.0	68.5	100.5	9.0	22.4	56.5	0.04	0.78	133.8

### PB SM Calf in Utero, Projected EPDs

15.6	-1.0	70.2	105.6	9.3	18.1	53.1	0.29	0.89	150.6
------	------	------	-------	-----	------	------	------	------	-------

Al'd to GCC Night Owl 3104L (ASA# 4284092) on 4/11/25. PE to ES Five Star Limitless (ASA# 4186927) from 5/31/25 to 7/28/25. The Warsaw daughters are special, and we don't let many go. Customers consistently report satisfaction with them, and semen is not on the market. This female is sound, functional, and designed with convenience traits. Out of a 3C cow, she combines practical value with quality. Watch for her Night Owl calf — daylight good.



Lot 49

# Bred Heifers

CLEAR WATER SIMMENTALS



Lot 50



Lot 51

50

CLRWTR *Yvonne* M903

BD. 3/18/24 • ASA# 4421204 • 3/4 Simmental Bred Heifer  
Tattoo. M903 • Adj. BW. 71 lbs. Adj. WW. 665 lbs.

JSUL SOMETHING ABOUT MARY 8421

sire CLRWTR SAM K57B

THSF MISS LOVELY B57

QUAKER HILL OBJECTIVE 3J15

dam MF YVONNE

MF HBP KISS ME TWICEN903

CE	BW	WW	YW	MCE	Milk	MWW	Marb	REA	API
12.1	0.6	79.4	122.0	6.0	23.0	63.1	0.14	0.85	116.5
PB SM Calf in Utero, Projected EPDs									
15.3	-0.7	75.6	116.5	7.9	18.5	56.5	0.35	0.93	145.4

AI'd to GCC Night Owl 3104L (ASA# 4284092) on 5/16/25. PE to ES Five Star Limitless (ASA# 4186927) from 5/31/25 to 7/28/25. After seeing Night Owl in Denver, it was clear he will work across many cow families. M903, sired by a Sam son, is a beautiful match for him. Feminine headed and extended through her neck, she is designed right with the promise to make an attractive and productive female. She sells AI'd to Night Owl.

BESHEARS SIMMENTALS

51

BESH/KRI *Ms Beyonce* MKCL2

BD. 3/28/24 • ASA# 4474935 • Purebred Bred Heifer  
Tattoo. MKCL2 • Adj. BW. 77 lbs.

LLSF VANTAGE POINT F398

sire CLRWTR CLEAR ADVANTAGE H4G

WS MISS SUGAR C4

TMAS CAN`T TOUCH THIS 8531F

dam BESH MS BEYONCE KCL2

BESH MS BEYONCE ECL2

CE	BW	WW	YW	MCE	Milk	MWW	Marb	REA	API
14.2	-0.1	77.0	115.4	6.6	20.8	59.2	0.24	0.77	141.0
PB SM Calf in Utero, Projected EPDs									
16.8	-2.0	100.2	154.9	8.1	25.6	75.6	0.36	1.19	165.7

AI'd to BAS Money Maker J801 (ASA# 3978845) on 4/14/25. Confirmed bred. Due 1/24/26. Several years ago, I decided to go to Lawrenceburg and then to Milan. I saw this bull, Clear Advantage, at just seven months of age. Leah would only sell half, so both now have several daughters, many of which are in production. Numerous bulls and heifers from this line have sold well in past sales, and semen sales have been strong—even being marketed in Canada. After using him for a couple of seasons, we reached an agreement to feature him as a frontliner in the 2023 bull sale. He sold that day for \$30,000 to the good home of Greg Grebes and Jess Range and has performed well for all involved. This bred comes up front. Her Money Maker calf will look strong on paper, particularly for CE, BW, MB, and REA. She is homozygous polled and homozygous black.



THE CLEAR  
CHOICE  
*upcoming sales*

Clear Choice Bull Sale • March 28, 2026

Clear Choice Customer Sale • April 25, 2026

Clear Choice Spotlight Show • April 25, 2026

Clear Choice Female Sale • October 24, 2026

# Fall Calving Cows



**CLRWTR Ditto H79A**  
Dam of Lots 52, 53 and 54



Lot 52



Lot 53



Lot 54

Lots 52, 53 and 54: We believe we've raised the bar on breds this year — not just in quality, but in quantity, marketability, and long-term genetic potential. Here we offer three full sisters, all sired by Next Level and out of CLRWTR Ditto, a daughter of Jestress B79. The Ditto family has anchored programs for years, and these breds carry on that tradition. Dwight and Steven Cooper at C&C Farms have built around Ditto, and for good reason. She won at every stage — calf, yearling, cow-calf pair — and was named Supreme Champion at the Sweepstakes. These daughters possess dimension, shape, power, and style, and will pass it on. Start or build your herd with confidence here.

CLEAR WATER SIMMENTALS

52

## CLRWTR *Ditto* L79A

BD. 9/5/23 • ASA#. 4347006 • 3/4 Simmental Open Cow  
Tattoo. L79A • Adj. BW. 77 lbs. Adj. WW. 692 lbs.

CE	BW	WW	YW	MCE	Milk	MWW	Marb	REA	API
10.7	2.6	83.9	124.6	5.0	19.7	61.6	-0.03	1.05	118.4

**PB SM Calf in Utero, Projected EPDs**

14.6	0.4	78.0	117.9	7.2	17.0	55.9	0.27	1.01	141.8
------	-----	------	-------	-----	------	------	------	------	-------

Lot 52A: Heifer Calf | BD: 9/6/25 | Tattoo: N79D | BW: 72#  
Sire: GCC Night Owl (ASA# 4284092)

CLEAR WATER SIMMENTALS

53

## CLRWTR *Ditto* L79C

BD. 9/8/23 • ASA#. 4347012 • 3/4 Simmental Bred Cow  
Tattoo. L79C • Adj. BW. 74 lbs. Adj. WW. 635 lbs.

CE	BW	WW	YW	MCE	Milk	MWW	Marb	REA	API
10.7	2.1	78.5	116.9	5.0	19.7	58.9	-0.03	1.01	117.2

**PB SM Calf in Utero, Projected EPDs**

14.4	-0.1	82.7	126.1	6.9	24.9	66.1	0.38	0.88	147.1
------	------	------	-------	-----	------	------	------	------	-------

AI'd to ES Five Star Limitless (ASA# 4186927) on 1/5/25.

CLEAR WATER SIMMENTALS

54

## CLRWTR *Ditto* L79E

BD. 10/10/23 • ASA#. 4347017 • 3/4 Simmental Open Cow  
Tattoo. L79E • Adj. BW. 83 lbs. Adj. WW. 579 lbs.

W/C BANKROLL 811D

sire **W/C BANK ON IT 273H**

KS MISS SEQUOIA Y770

W/C EXECUTIVE ORDER 8543B

dam **CLRWTR DITTO H79A**

MISS CCF JESTRESS B79

CE	BW	WW	YW	MCE	Milk	MWW	Marb	REA	API
12.5	1.0	70.8	99.8	6.1	21.5	56.8	0.04	0.84	115.4

**Bull Calf at Side, Projected EPDs**

15.4	-0.6	78.7	117.2	7.6	25.4	64.6	0.41	0.81	144.7
------	------	------	-------	-----	------	------	------	------	-------

Lot 54A: PB SM Bull Calf | BD: 9/25/25 | Tattoo: N79E | BW: 69#  
Sire: ES Five Star Limitless

# Fall Calving Cows

CLEAR WATER SIMMENTALS



Lot 55

55

CLRWTR *Bonnie* L61A

BD. 9/2/23 • ASA#. 4347021 • Purebred Open Cow  
Tattoo. L61A • Adj. BW. 83 lbs. Adj. WW. 632 lbs.

JS SURE BET 4T  
*sire* **FBFS WARSAW 068W**  
FBFS SLOW MELT 089S  
MR CCF VISION  
*dam* **CLRWTR BONNIE H61A**  
MISS CCF SHEZA BONNIEY61

CE	BW	WW	YW	MCE	Milk	MWW	Marb	REA	API
13.0	0.5	68.0	97.6	7.1	20.2	54.2	-0.03	0.81	110.8
<b>PB SM Calf in Utero, Projected EPDs</b>									
12.7	0.9	83.9	130.0	7.4	21.7	63.6	0.38	0.86	143.3

**Lot 55A: Bull Calf | BD: 9/1/25 | Tattoo: N61 | BW: 77#**

**Sire: Schooley Krown (ASA# 4115546)**

We breed a select group of females each year to Warsaw because his progeny consistently work for both us and our customers. L61A is another prime example of the quality and consistency he sires. This standout traces directly back to the NAILE Champion, Sheza Bonnie, further strengthening her credentials. She's already done the hard work and comes with a stout Krown bull calf at side.



Lot 56

56

NAHF *Miss Drop The Mic* 338L

BD. 9/10/23 • ASA#. 4470576 • Purebred Open Cow  
Tattoo. 338L • Adj. BW. 78 lbs.

MR SR 71 RIGHT NOW E1538  
*sire* **MR SR MIC DROP G1534**  
MISS SR C1534  
W/C FORT KNOX 609F  
*dam* **BBARH JINX J912**  
HILB MISS VERSACE E57C

CE	BW	WW	YW	MCE	Milk	MWW	Marb	REA	API
13.0	-0.2	80.8	131.0	8.4	23.2	63.5	0.15	0.92	141.5
<b>PB SM Heifer Calf at Side, Projected EPDs</b>									
15.2	-2.9	68.4	106.5	8.0	24.1	58.1	0.1	0.93	138.9

**Lot 56A: Heifer Calf | BD: 9/6/25 | Tattoo: 533N | BW: 68#**

**Sire: 2/F JWC Unassisted 675K (ASA# 4154132)**

This Mic Drop daughter comes to you in a moderate frame with a loaded pedigree! She has a perfect blazed face, she's big centered, has great feet, legs and a beautiful udder.



Lot 57

57

NAHF *Miss Advantage* 347L

BD. 9/14/23 • ASA#. 4470580 • 1/2 Simmental Open Cow  
Tattoo. 347L • Adj. BW. 81 lbs.

LLSF VANTAGE POINT F398  
*sire* **CLRWTR CLEAR ADVANTAGE H4G**  
WS MISS SUGAR C4  
GCC GOLD STANDARD X615  
*dam* **4 (COMMERCIAL ANGUS)**

CE	BW	WW	YW	MCE	Milk	MWW	Marb	REA	API
12.2	0.7	79.7	118.8	5.9	24.8	64.5	0.23	0.64	121.1
<b>3/4 SM 1/4 CS Heifer Calf at Side, Projected EPDs</b>									
15.2	-0.8	83.2	126.9	7.5	27.1	68.6	0.51	0.70	155.5

**Lot 57A: Heifer Calf | BD: 9/4/25 | Tattoo: 530N | BW: 67#**

**Sire: ES Five Star Limitless (ASA# 4186927)**

This Clear Advantage daughter is the kind we all strive to make; beautiful profile with the genomics to back it up. You will want to put this one on your list. She can raise the top end kind of bulls and the kind of heifers you want to keep for yourself.

LUCKY PENNY CATTLE COMPANY

# Fall Calving Cows

CLEAR WATER SIMMENTALS

58

## CLRWTR *Fancy Like* L700

BD. 8/23/23 • ASA#. 4347022 • Purebred Bred Cow  
Tattoo. L700 • Adj. BW. 86 lbs. Adj. WW. 613 lbs.

HTP/SVF DURACELL T52

sire **THSF LOVER BOY B33**

RP/MP RIGHT TO LOVE 015U

JSUL SOMETHING ABOUT MARY 8421

dam **CLRWTR FANCY LIKE J700**

B-C LOOKIN SHARP 7002E

CE	BW	WW	YW	MCE	Milk	MWW	Marb	REA	API
13.6	1.2	80.0	115.3	6.2	22.8	62.8	0.17	0.62	129.0

**PB SM Calf in Utero, Projected EPDs**

14.1	1.2	81.3	115.3	6.1	20.9	61.4	0.27	0.60	141.3
------	-----	------	-------	-----	------	------	------	------	-------

**Lot 58A: Heifer Calf | BD: 9/1/25 | Tattoo: N700.**

**Sire: WHF/JS/CCS Woodford J001 (ASA# 4068398)**

*Fancy Like is a homo polled, striking female that ranks in the top 25% for CE and the top 30% for DMI and DOC. This package is topped off with a fancy heifer calf by Woodford.*



Lot 58

LUCKY PENNY CATTLE COMPANY

59

## NAHF *Miss Persistent* 310L

BD. 8/25/23 • ASA#. 4470570 • 1/2 Simmental Bred Cow  
Tattoo. 310L • Adj. BW. 75 lbs.

W/C EXECUTIVE ORDER 8543B

sire **FELT PERSEVERANCE 302F**

RUBYS RHYTHM Z231

dam **231**

CE	BW	WW	YW	MCE	Milk	MWW	Marb	REA	API
13.6	-1.4	65.2	102.5	6.7	21.2	53.7	0.13	0.62	109.5

**3/4 SM 1/4 AN Calf in Utero, Projected EPDs**

12.4	1.2	75.6	111.5	6.3	25.1	62.8	0.16	0.81	115.1
------	-----	------	-------	-----	------	------	------	------	-------

*AI'd to WHF Woodford F66 (ASA# 3477467) on 3/31/25. Here is a really nice baldy heifer that is big bodied with the kind of feet and legs that will keep her in production for a long time. She is bred for an early January calf to Woodford that could be a homerun!*



Lot 59

BESHEARS SIMMENTALS

60

## BESH *Ms Missy* LH41

BD. 9/1/23 • ASA#. 4326819 • Purebred Bred Cow  
Tattoo. LH41 • Adj. BW. 77 lbs.

MR CCF 20-20

sire **B C R PERFECT VISION**

HSF CALLIE D613

RGRS SRG TWO STEP 20Z ET

dam **HPF MISSY C068**

WLE MISSY U409

CE	BW	WW	YW	MCE	Milk	MWW	Marb	REA	API
10.3	1.6	69.2	91.2	3.8	16.5	51.3	0.21	0.53	122.7

**PB SM Calf in Utero, Projected EPDs**

14.1	-1.2	72.0	100.6	7.6	18.0	54.0	0.22	0.67	133.6
------	------	------	-------	-----	------	------	------	------	-------

*AI'd to WHF Point Proven H45 (ASA# 3780742) on 2/22/25. Confirmed bred. Due 12/2/25. HPF Missy C068 continues to make her mark on producing the cowman's type. Check out this deep, soggy, easy fleshing female that is bred up to the striking Point Proven. She ranks in the top 1% for the new DMI.*



Lot 60

# Fall Calving Cows

BESHEARS SIMMENTALS



Lot 61

61

BESH *Ms Gabby* L20E

BD. 10/15/23 • ASA#. 4445494 • Purebred Bred Cow  
Tattoo. L20E • Adj. BW. 80 lbs.

GLS/JRB COOL 154C  
*sire* **K-F PAYS TO BE COOL J210**  
HF MARIANNE 209D  
PROFIT

*dam* **HFCS GABBY 20E**  
HURLBUTS GABBY Z160

CE	BW	WW	YW	MCE	Milk	MWW	Marb	REA	API
9.8	4.4	73.6	110.4	4.1	16.9	53.7	0.34	0.68	117.5

**PB SM Calf in Utero, Projected EPDs**

12.0	2.0	79.8	119.2	5.3	21.5	61.3	0.41	0.72	131.6
------	-----	------	-------	-----	------	------	------	------	-------

**AI'd to CLRWTR Clear Advantage (ASA# 3858588) on 1/31/25. Sexed female semen. Confirmed bred. Due 11/10/25.** If you are looking for something a little different than some of the females in the sale, take a look at Gabby. Her pedigree is different than many, but the opportunities are endless. She is bred to sexed Clear Advantage semen.

NEAL BROTHERS



Lot 62

62

20L

BD. 10/25/23 • ASA#. 4397675 • Purebred Bred Cow  
Tattoo. 20L • Adj. BW. 59 lbs. Adj. WW. 609 lbs.

WBF SIGNIFICANT B1322852587BBPP  
*sire* **RUBYS TURNPIKE 771E**  
RUBYS MISS CLEO 240Z  
NB SARGE 44B

*dam* **NB SALLY ANNE 5E**  
NB DREAMBOAT ANNE 5U

CE	BW	WW	YW	MCE	Milk	MWW	Marb	REA	API
11.1	2.1	77.0	123.8	5.5	23.4	61.8	0.08	0.96	127.1

**1/2 SM 1/2 CS Calf in Utero, Projected EPDs**

17.1	0.6	82.0	128.3	9.5	25.7	66.6	0.30	1.05	150.3
------	-----	------	-------	-----	------	------	------	------	-------

**Bred to Ruby's Start Up 3L1 (ASA# 4370993) on 3/9/25. Due 12/17/25.** Here is a full sister to 94M and a good one. There is something special, a Turnpike daughter that will have the first calf out Ruby's Start Up. The epd profile fits in the ASA data bank and is high ranked in his epds. Start Up in the top 1% for CE at 23 and in the top 10% WW and YW and even excellent across the board. You will be able to purchase this female calving in December. My wife said you went out and purchased an exciting herd bull and we are not even having the first calf. Have a Merry Christmas.

NEAL BROTHERS



Lot 63

63

NB *Iron Carly* 54L

BD. 9/5/23 • ASA#. 4359755 • 5/8 Simmental Bred Cow  
Tattoo. 54L • Adj. BW. 71 lbs.

ACW IRONHIDE 395Y  
*sire* **WBF IRON CLAD E053**  
WBF HEBE W276  
W/C BOXCAR 185B

*dam* **NB CARLOTTA 54E**  
NB TOTALLY MISS J 54U

CE	BW	WW	YW	MCE	Milk	MWW	Marb	REA	API
9.5	1.5	68.7	114.8	5.2	25.7	60.0	0.18	0.47	110.1

**5/8 SM 3/8 AN Calf in Utero, Projected EPDs**

10.0	1.4	72.5	111.4	4.3	19.2	55.4	0.17	0.53	117.7
------	-----	------	-------	-----	------	------	------	------	-------

**Bred to SVF Buckle Up B58 (ASA# 2981242) on 2/17/25. Due 11/27/25.** We really like this star-faced female. Backed by Ironhide and W/C Box Car, she has the makings of more than just a solid cow. Her dam, Carlotta, has produced numerous calves of both sexes that have performed well, ranking high at weaning time. 54L is a moderate-framed, practical kind of female that will bring a quick return.

# Fall Calving Cows

BESHEARS SIMMENTALS

64

## BESH *Ms Silk* LG17

BD. 9/24/23 • ASA#. 4326826 • Purebred Bred Cow  
Tattoo. LG17 • Adj. BW. 76 lbs.

TJ MAIN EVENT 503B

sire **CDI INNOVATOR 325D**

CDI MS SHEAR FORCE 49U

CNS DREAM ON L186

dam **SOSF EBONY'S BLACK SILK**

SOSF EBONY'S JOY L-123

CE	BW	WW	YW	MCE	Milk	MWW	Marb	REA	API
12.5	0.5	83.0	116.3	6.0	22.7	64.1	0.14	1.06	124.8

### PB SM Calf in Utero, Projected EPDs

13.4	0.0	84.3	122.0	6.2	24.4	66.3	0.31	0.91	135.6
------	-----	------	-------	-----	------	------	------	------	-------

AI'd to CLRWTR Clear Advantage (ASA# 3858588) on 1/29/25. Sexed female semen. Confirmed bred. Due 11/19/25. Here is a homo polled and homo black female going back to the great L-123. LG17 has an exceptional set of EPD's which should suit her mating to Clear Advantage well. A solid purebred cow that can make a difference in a herd.



Lot 64

BESHEARS SIMMENTALS

65

## BESH *Ms KR*1

BD. 6/2/23 • ASA#. 4566445 • 1/2 Simmental Bred Cow  
Tattoo. LR1 • Adj. BW. 70 lbs.

K-LER MAKE IT RAIN

sire **BESH BULL C91**

BESH MS ANNABELL Y2

dam **R1**

CE	BW	WW	YW	MCE	Milk	MWW	Marb	REA	API
9.6	1.0	65.6	92.3	4.4	22.1	71.7	0.07	0.78	119.5

### 1/2 SM 1/2 CS Calf in Utero, Projected EPDs

14.2	-1.3	71.1	101.9	8.1	20.9	56.3	0.15	0.78	127.9
------	------	------	-------	-----	------	------	------	------	-------

Lot 65A: Bull Calf | BD: 9/19/25 | BW: 76#

Sire: WHF Point Proven H45 (ASA# 3780742)

The girls call her "Sweets," and for good reason. She's complete in her overall design, well-balanced, and the kind that makes breeding decisions easy—you get consistency no matter which sire you use. We bred her to Point Proven, the Select Sires and Trennepohl promotional herd bull, and this could be one of the best matings in the offering. As a half-blood, she brings versatility to your program with many breeding options ahead. Call me after calving—I'm confident you'll be a satisfied customer.



Lot 65

BESHEARS SIMMENTALS

66

## BESH *Ms Andie* LE15

BD. 4/22/23 • ASA#. 4566447 • Purebred Bred Cow  
Tattoo. LE15 • Adj. BW. 81 lbs.

KCC1 EXCLUSIVE 116E

sire **WHF ENTOURAGE H450**

WHF DELILAH 45D

MR HOC BROKER

dam **WHF ANDIE 365A**

PRS SUMMER W364

CE	BW	WW	YW	MCE	Milk	MWW	Marb	REA	API
12.1	1.7	75.9	105.7	5.3	21.8	59.6	-0.09	0.92	109.2

### PB SM Calf in Utero, Projected EPDs

13.4	0.8	82.8	124.6	7.5	19.7	60.9	0.22	1.01	142.6
------	-----	------	-------	-----	------	------	------	------	-------

Lot 66A: Bull Calf | BD: 9/9/25 | BW: 86#

Sire: KBHR Summit L100 (ASA# 4225776)

Here's an Andie daughter you'll want to add to your program. The Andie family is proven fertile, maternal, and built to last—with strong milking ability and stayability generation after generation. Her data and EPDs read well, but beyond the numbers, this female offers the kind of structure, consistency, and longevity that make lasting cow families. If you want a dependable cow backed by one of the most influential donors in our herd, take a close look here.



Lot 66

# Fall & Spring Calving Cows

NEAL BROTHERS



Lot 67

67

## NB *Painted Sally* L35

BD. 7/27/23 • ASA# 4397683 • 5/8 Simmental Bred Cow  
Tattoo. L35 • Adj. BW. 67 lbs. Adj. WW. 601 lbs.

TJ CHIEF 460G  
*sire* **TJ WAR PAINT 759J**  
TJ 2D  
NB SARGE 44B  
*dam* **NB SALLY ANNE 5E**  
NB DREAMBOAT ANNE 5U

CE	BW	WW	YW	MCE	Milk	MWW	Marb	REA	API
11.4	0.8	74.5	110.8	7.8	27.8	65.0	0.28	0.33	128.5

### 5/8 SM 3/8 AN Calf in Utero, Projected EPDs

11.0	1.0	75.6	109.6	5.6	20.8	58.5	0.22	0.45	129.7
------	-----	------	-------	-----	------	------	------	------	-------

Bred to SVF Buckle Up B58 (ASA# 2981242) on 2/6/25. Due 11/16/25. Sally L35 is a laid-back, easygoing female with a big, square hip, plenty of rib shape, and overall capacity. She is broody, efficient, and backed by one of our top-producing families that traces back to Dreamboat Annie—one of the most proven lines of genetics in the breed.

# Spring Calving Cows

LUCKY PENNY CATTLE COMPANY



Lot 68



Fivestar MVP  
Service Sire of Lot 68

68

## NAHF *Millies Girl* 277K

BD. 10/1/22 • ASA# 4246032 • Purebred Bred Cow  
Tattoo. 277K • Adj. BW. 77 lbs.

SS EXTRAORDINAIRE E513  
*sire* **FFS GRITT G131**  
STF ONYX 451W  
GXK MR JERRY 351E  
*dam* **NAHF MILLIES JOY 954G**  
CLRWTR JOY D5105A

CE	BW	WW	YW	MCE	Milk	MWW	Marb	REA	API
14.4	-0.1	61.6	84.2	6.7	18.7	49.5	0.01	0.82	118.5

### PB SM Calf in Utero, Projected EPDs

14.5	-0.4	75.0	113.3	7.8	21.7	59.1	0.12	0.76	131.0
------	------	------	-------	-----	------	------	------	------	-------

PE to Fivestar MVP (ASA# 4406801) from 6/3/25 to 7/1/25. Here is a nice 3-year-old cow with some real cow power in her pedigree. She is bred to our new herd sire that we are very excited about, Five Start MVP (ASA#4406801). This will be one of his first calves so get in on his first calf crop!

BARRON SIMMENTALS/CLEAR WATER SIMMENTALS



Lot 69



JBSF Proud Mary  
Dam of Lot 69

69

## JSUL *Mary* 2609K

BD. 9/20/22 • ASA# 4209608 • Purebred Bred Cow  
Tattoo. 2609K • Adj. BW. 74 lbs.

HTP/SVF DURACELL T52  
*sire* **THSF LOVER BOY B33**  
RP/MP RIGHT TO LOVE 015U  
YARDLEY HIGH REGARD W242  
*dam* **JBSF PROUD MARY**  
BROOKS STEELMAGNOLIA X57

CE	BW	WW	YW	MCE	Milk	MWW	Marb	REA	API
13.6	-0.7	70.1	104.4	6.0	24.5	59.5	0.37	0.57	139.7

### PB SM Calf in Utero, Projected EPDs

16.2	-1.6	77.9	118.8	7.6	26.6	65.4	0.58	0.70	159.4
------	------	------	-------	-----	------	------	------	------	-------

AI'd to ES Five Star Limitless (ASA# 4186927) on 5/12/25. Here is a royally bred, super-attractive red female. She is a direct daughter of the famed Proud Mary, whose progeny have been a dominant force in both the show and sale rings. We are committed to offering a high-quality, diverse genetic lineup, and this Loverboy daughter certainly fits the bill. She will be an asset in your herd for years to come. As an added bonus, she's safe AI to the popular ES Five Star Limitless.

# Embryos



Lot 70



**Five Star MVP M60**  
Sire of Lot 70 Embryos



**Plum Creek Paradox**  
Sire of Lot 71A Embryos



Lot 71

CLEAR WATER SIMMENTALS

71

## HF *Serena Embryos*

BD. 2/8/11 • ASA#. 2584182 • Purebred  
Tattoo. 74Y • Adj. BW. 90 lbs.

sire HTP/SVF DURACELL T52  
**GSC GCCO DEW NORTH 102C**  
WELSH`S SCARLET 161Z  
MR NLC UPGRADE U8676

dam **HF SERENA**

MISS KNOCKOUT 74T

Lot 71A: 1/2 SM 1/2 AN Embryos by Plum Creek Paradox (ASA# 3239903) Projected EPDs

CE	BW	WW	YW	MCE	Milk	MWW	Marb	REA	API
6.6	3.4	78.2	113.2	2.5	20.4	59.4	0.1	0.55	90.9

Lot 71A: 1/2 SM 1/2 AN Embryos by Circle M Tejas (ASA# 2878959) Projected EPDs

CE	BW	WW	YW	MCE	Milk	MWW	Marb	REA	API
8.7	2.0	69.3	105.8	3.9	17.5	52.1	0.35	0.44	123.7

Lot 71B: PB SM Embryos by GSC GCCO Dew North 102C (ASA# 3141837) Projected EPDs

CE	BW	WW	YW	MCE	Milk	MWW	Marb	REA	API
10.2	2	84.5	115.9	2.7	19	61.1	0.07	1.01	116.6

Lot 71A: Four Embryos by Plum Creek Paradox 161B (ASA# 3239903), two #1 embryos, two #2 embryos RSF), Two embryos by Circle M Tejas (ASA# 2878959), two #2 embryos. Lot 71B: Selling three #2 embryos. There isn't much to be said that hasn't already been written about the power, consistency, production record, and influence of HF Serena. From the many banners she claimed in the show ring to the countless more earned by her sons, daughters, and grand progeny, her impact on the breed is undeniable. We've retained several outstanding daughters, and now we are offering the very last embryos we have on this legendary female. As these are our final embryos, they will sell with no guarantee. An investment in HF Serena genetics doesn't take long to recoup—and will continue putting money in the bank for years to come.

CLEAR WATER SIMMENTALS

70

## CLRWTR *Sugar H4F Embryos*

BD. 9/6/20 • ASA#. 3858590 • Purebred  
Tattoo. H4F • Adj. BW. 82 lbs. Adj. WW. 761 lbs.

sire OMF JOURNEYMAN J24  
**FIVE STAR MVP M60**  
FIVE STAR SHEILA C1  
LLSF VANTAGE POINT F398

dam **CLRWTR SUGAR H4F**  
WS MISS SUGAR C4

Purebred Simmental Embryos Projected EPDs

CE	BW	WW	YW	MCE	Milk	MWW	Marb	REA	API
14.6	-0.8	86.2	131.4	7.8	25.4	68.4	0.3	0.69	138.9

3 conventional embryos sell, guaranteeing one 90-day pregnancy if embryos are implanted within 1 year of sale date. We're pleased to share one of our freshest matings! H4F, known around here as "Sister," is the full sister to Clear Advantage. We chose to mate this powerhouse with Nate and Ashley's new herd sire, MVP, who himself boasts a powerful pedigree and a stout set of numbers to complement his impressive phenotype. We're eager to see these calves hit the ground, as we're hoping for some future bull sale features.

# Clear Choice Herd Sire Semen Lots

JOE NEAL



Lot 72

72

## RUBYS *Start Up* 3L105

BD. 9/25/23 • ASA#. 4370993 • Purebred Semen  
Tattoo. 3L105 • Adj. BW. 83 lbs. Adj. WW. 788 lbs.

SFG COWBOY LOGIC D627

sire **SFG HEAD START H0509**

SFG JERRI E97

WS ALL-AROUND Z35

dam **RUBYS LINDA 721E**

RUBYS LINDA 341A

CE	BW	WW	YW	MCE	Milk	MWW	Marb	REA	API
23.3	-1.1	87.0	132.6	14.0	27.9	71.3	0.52	1.11	178.5

**Selling two packages of conventional semen in packages of 5 units.** *Start Up* was the standout selection and Lot 1 highlight of the recent Ruby Cattle Bull Sale—and for good reason. He brings together an exceptionally solid pedigree with a powerful, breed-leading EPD profile, making him a sire with true long-term value. This offering marks the first-ever semen to sell at public auction on *Start Up*, giving breeders a rare opportunity to invest early in what promises to be a high-impact sire.

NEAL BROTHERS



Lot 73

73

## BAS *Makin Money* M4141

BD. 3/22/24 • ASA#. 4426477 • 3/4 Simmental Semen  
Tattoo. M4141 • Adj. BW. 93 lbs. Adj. WW. 777 lbs.

HOOK`S EAGLE 6E

sire **BAS MONEY MAKER J801**

BAS MISS BEACON F801

CCR COWBOY CUT 5048Z

dam **TJ 141C**

TJ MISS NET WORTH W9

CE	BW	WW	YW	MCE	Milk	MWW	Marb	REA	API
10.9	2.8	126.0	201.7	5.6	28.5	90.8	0.49	1.41	147.6

**Selling two packages of conventional semen in packages of 5 units.** *BAS Makin Money* M4141 is a double-digit CE bull with top 40% MARB and top 1% REA. He is top 30% API and top 1% TI. The narrative has been pushed to make small cattle who are high API have a crazy amount of calving ease but also have no performance. This bull will make them bigger, stouter and pack a punch without causing calving difficulties or sacrificing any end product value. Furthermore, he has maternal greats in his pedigree such as Hook` Eagle and Hook`s Beacon and even better he is out of a cow direct from the heart of the herd of Triangle J sired by one of the best to ever do it CCR Cowboy Cut 5048Z. If you want to sell baldies that pack on the pounds plus do everything else, you need him!

BESHEARS SIMMENTALS



Lot 74

74

## B C R *Dialed In* L111

BD. 3/18/23 • ASA#. 4323168 • 3/4 Simmental Semen  
Tattoo. L111 • Adj. BW. 78 lbs.

WLE COPACETIC E02

sire **RP/BCR EMINENCE H005**

RP/MP BUILT TO LOVE A021

DWC GSC 71B

dam **DWC BECCA 35F**

AKERS RITA 0050

CE	BW	WW	YW	MCE	Milk	MWW	Marb	REA	API
8.9	0.9	72.4	113.7	2.3	15.6	51.7	0.22	1.02	107.3

**Selling five packages of sexed semen in packages of 5 units. Semen is available for shipping or can be picked up on sale day.** *B C R DIALED IN* L111 is a proven sire with a big square hip, massive body, excellent rib shape, and great hair. His huge, square feet and legs add to his exceptional structural soundness. His calves have come easy, been presented right at birth, and have tons of vigor. We've had enough calves out of him to confidently say that we want to use him more. Matter of fact, we have flushed most of our donors to him. His progeny consistently inherit his impressive hip, hair, bone, and carry a remarkable presence about them. We love to talk cattle, so feel free to call or text anytime—whether it's about *Dialed In* or just good cattle in general!

# Clear Choice Herd Sire Semen Lots

CLEAR WATER SIMMENTALS/FIVE STAR RANCH

75

## ES *Five Star Limitless*

BD. 2/5/23 • ASA#. 4186927 • Purebred Semen  
Tattoo. LJ39 • Adj. BW. lbs. Adj. WW. lbs.

CDI INNOVATOR 325D  
sire **LCDR PROGRESSIVE 106G**  
WS MISS SUGAR C4  
LBRS GENESIS G69  
dam **ES J39**  
ES/ALL BEEF F113

CE	BW	WW	YW	MCE	Milk	MWW	Marb	REA	API
18.2	-2.2	86.6	134.8	9.1	29.6	72.8	0.78	0.77	180.4

**Selling five packages of conventional semen in packages of 5 units. Semen is available for shipping or can be picked up on sale day.** Limitless – A Game-Changer in the Making! Limitless is quickly establishing himself as a standout sire, with his first calf crop hitting the ground in impressive fashion. These calves are stout, eye-catching, and full of vigor—everything you'd hope for in a next-generation herd sire. In all our years in the Simmental business, we've never been more excited about a calf crop. What truly sets Limitless apart is his exceptional EPD profile, which has the potential to transform a breeding program in just one generation. Don't miss your chance to bring Limitless genetics into your herd.



Lot 75

76

## Five Star *MVP* M60

BD. 3/22/24 • ASA#. 4406801 • Purebred Semen  
Tattoo. M60 • Adj. BW. 77 lbs. Adj. WW. 721 lbs.

MR SR MIC DROP G1534  
sire **OMF JOURNEYMAN J24**  
OMF DEKA D23  
MR NLC UPGRADE U8676  
dam **FIVE STAR SHEILA C1**  
OMF SHEENA MARK Y1

CE	BW	WW	YW	MCE	Milk	MWW	Marb	REA	API
14.5	-0.7	88.4	142.4	9.0	24.6	68.7	0.22	0.66	145.7

**Selling two packages of conventional semen in packages of 5 units.** Five Star MVP is an absolute Powerhouse that is backed by one of the cornerstone cow families at Five Star Ranch. He is a top calving-ease prospect that offers growth and carcass merit. He is big footed, stout boned, and high volume.



Lot 76



**NAHF Ms Sam 422M**  
4th Overall Purebred Simmental - 2025 Eastern Regional  
Congratulations Sadie Jackson



**Besh Ms Firefly MG902**  
Reserve Division Owned Show - 2025 AJSA National Classic  
Congratulations Drew Stock and Josh Cribbs & Family



**Showmanship Winners**



**BESH Ms Missy MJB2**  
Breyer Horner



**BESH KRI Ms Elle MEZ35**  
Owen Smith



**WHF Delilah 455M**  
Cooper Joines



**NAHF MISS TACORI 307L**  
Laura Ellington



**CLRWTR Beautiful Amora M223B**  
Lane Simon



**BESH Ms True Love MG14**  
Cora Feltner



**CLRWTR BRRN Miss Secret Weapon**  
Laura Ellington



**CLRWTR Josie M31P**  
Lexi Baylor



**CLRWTR Suga M4G**  
Kassidy Gabbard



**CLRWTR VEHS Right to Love 2402**  
Ryder Barnhill



**BRKLN D Butterfly M42**  
Haidyn Smith

# THE CLEAR CHOICE

# spotlight

## Customer Junior Show



Supreme Champion Female • Champion Purebred Heifer  
BESH WHF Addy Lou MJU4 • Cash Rumble



Champion Percentage Heifer  
CLRWTR Rory M63 • Taylor Ellington



Reserve Supreme Champion Female • Reserve Champion Purebred Heifer  
NAHF Miss SAM 422M • Sadie Jackson

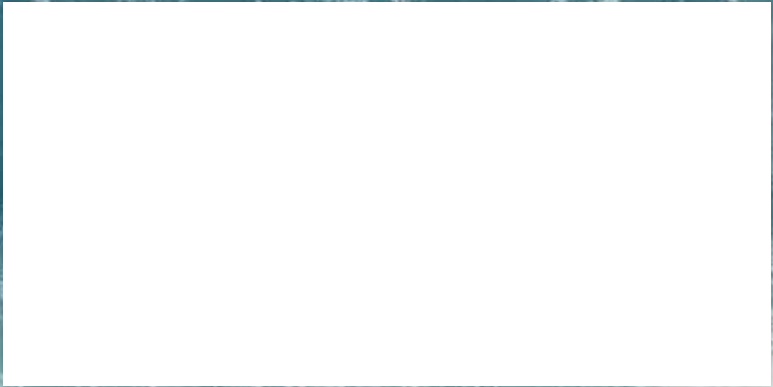


Reserve Champion Percentage Heifer  
CLRWTR Dahlia L79D • Taylor Ellington

**Congratulations**  
to our 2025 Winners!



DP Sales Management, LLC  
153 Bourbon Hills  
Paris, KY 40361  
[www.dpsalesllc.com](http://www.dpsalesllc.com)



8<sup>TH</sup> ANNUAL

# THE CLEAR CHOICE

*female sale*

**SATURDAY, OCTOBER 25, 2025  
1:00 PM EST • MILAN, IN**

*Selling 60+ Simmental & SimAngus Females  
Show Heifer Prospects, Proven Donors & Bred Females*