



6TH ANNUAL

THE CLEAR CHOICE

female sale

SATURDAY, OCTOBER 28, 2023

1:00 PM EST • MILAN, IN

*Selling 60+ Simmental & SimAngus Females
Show Heifer Prospects, Proven Donors & Bred Females*

6TH ANNUAL THE CLEAR CHOICE *female sale*

SATURDAY, OCTOBER 28, 2023

1:00 PM EST • MILAN, IN

*Selling 60+ Simmental & SimAngus Females
Show Heifer Prospects, Proven Donors & Bred Females*

SALE SCHEDULE

Friday, October 27th

All Day Cattle on display for viewing

Saturday, October 28th

8:00 AM Cattle on display for viewing

1:00 PM The Clear Choice Female Sale

SALE LOCATION

ClearWater Simmentals Sale Facility

5512E St Rd 350 Milan, IN 47031

Sale facility has hard surface parking and is handicap accessible.

HOTELS

Double Tree 812-539-8888

51 Walnut St, Lawrenceburg, IN

Comfort Inn 812-539-3600

1610 Flossie Dr, Lawrenceburg, IN 47025

TRUCKING

Brian Wyatt 423-240-5533

Dick Coleman 765-461-0954

SALE TERMS & CONDITIONS

All animals will be sold in accordance with the suggested guidelines of the American Simmental Association. For updated EPDs, genetic status, plus the current ASA guidelines and conditions go to www.simmental.org. Announcements made sale day and from the auction block take precedence over printed material associated with this sale. Anyone attending this sale attends at his or her own risk. ClearWater Simmentals, DP Sales Management, LLC, or guest consignors will not be responsible for any personal injury while attending this sale.

HERD HEALTH

All bred cattle are vaccinated with Covexin 8, Vira Shield 6+VL5 HB, Autogenous Bacterin, Scour Guard 4KC, Multi Min and wormed with Dectomax pour on.

All opens are vaccinated with Covexin 8, Pyramid 5+Presponse SQ, Multi Min. and wormed with Dectomax pour on and Synanthic Suspension.

All cattle have been BVD tested and everything 3 years and older is Johnes tested annually.

All calves along side cows have been given 1 dose of Nasalgen 3 PMH and Multi min

SALE DAY PHONES

Doug Parke 859-421-6100

Drew Hatmaker 423-506-8844

Holli Hatmaker 859-707-5248

Leah Meinders 812-498-2840

Jeff Meinders 812-871-1313

Bobby Beshears 765-717-4789

SALE MANAGEMENT



Doug & Debbie Parke | Drew & Holli Hatmaker

Office 859-987-5758

153 Bourbon Hills Paris, KY 40361

Sales Management.. office@dpsalesllc.com | www.dpsalesllc.com

SALE STAFF

Thomas Carper, Auctioneer 540-336-2737

Mike Berger, Ring Staff 574-850-5605

Josh Jasper, Ring Staff 859-285-8702

Rod Chapman, Ring Staff 269-832-9622

Evan Eggersman, Ring Staff 812-569-2951

Ryan Haefner, Consultant 815-499-0522

Dalton Lundy, Consultant 502-727-6898

Tim Schwab, Consultant 812-569-8536

ONLINE BIDDING

Bid online and watch the sale live
at dvauction.com



SALE REGISTRATION & PAYMENT

All buyer numbers will only be issued with a valid ID and payment is due day of sale. DP Sales Management, LLC accepts Visa, MasterCard, check, e-check, or cash. All purchases are expected to be paid day of sale unless arrangements have been made with sale management. Cattle will not be transferred until paid for in full. Purchases made through internet bidding follow the same terms. Payment must be completed on day of sale by credit card or e-check.

Catalog designed by

Generation 6
marketing
www.generation6.co

join us on sale day!

It is always an honor and privilege to welcome cattlemen and women, families, and juniors from across the U.S. to Milan for the Clear Choice Sales. What an opportunity to have three sales here at this facility throughout the year. The planning of one sale leads to the next sale. The work and dedication that is put in each day to breeding programs in The Clear Choice never stops. The breeders are dedicated to their programs and the future success of their customers. We all know that being involved in Agriculture and the beef cattle industry is an everyday job with no time off. I know that it means a lot to the consignors in this sale for your interest in their operations and in this sale.

Due to this, new in 2024 will be the Clear Choice Spotlight Show for junior members following the Clear Choice Customer Sale in April. Juniors from any state will be able to bring their Clear Choice females back here to Milan to participate in a one of a kind show with the opportunity to get a return on their investment. For more information and rules check out the back of the catalog.

The females throughout these pages are backed by some of the best cow families in the business. Though as you look through you will see that the cow base is so strong that there are a lot of great open and bred females that aren't embryo transfer calves, but their dams are outstanding females within their respective herds. That says a lot for the depth, quality, and foundation of the herds of the Clear Choice breeders.

As always, Jeff and Leah roll out the hospitality at their sale facility and welcome their customers and friends here to their sale facility. What a joyous and welcoming place it is in Milan the 4th Saturday in October. Like always, if the consignors or DP Sales Management can be of assistance to you concerning this sale, we would be happy to do so. We look forward to welcoming you to the Clear Choice Sale!



Doug Parke, DP Sales Management



Sales Management

Doug & Debbie Parke / Drew & Holli Hatmaker

Doug, 859-421-6100 / Office, 859-987-5758

Drew, 423-506-8844 / Holli, 859-707-5248

153 Bourbon Hills Paris, KY 40361

office@dpsalesllc.com / www.dpsalesllc.com



ClearWater Simmentals

Jeff & Leah Meinders / Milan, Indiana

Leah Meinders, 812-498-2840

Jeff Meinders, 812-871-1313

www.clearwatersimmentals.com



Beshears Simmentals

Bobby, Elizabeth, David and Kenny Beshears
Winchester, IN

765-717-4789 / bobbydbeshears@gmail.com

HTP Simmentals

Drew & Holli Hatmaker / Paris, KY

Drew 423-506-8844

Holli 859-707-5248

Lucky Penny Cattle Company

Nate Hoeing / Rushville, IN

765-561-3178

Neal Brothers

Joe Neal / Bicknell, IN

812-881-9381

females built for you

Each sale when we sit down to write sale letters you have to take a moment to think about how lucky we are to be able to raise Simmental cattle and be a part of such a community of people who trust and believe in our program that they would come here to buy cattle. It is truly humbling and as we prepare for sales, it is something we do not take lightly.

As we head into this sale and looking to the future, we are excited to share this group of open females with you. Over the past few years we have been very selective on the genetics we are adding to our operation, and we are starting now to see the benefits of those choices. Open females in this sale will be eligible to compete in the first Clear Choice Spotlight Show which you can learn more about in the back of this catalog. We are excited to offer another opportunity for our young customers.

The Beshears', Hoeing, and Neal families are not just consignors, but they are great friends. We cannot thank them enough for believing in this sale to market their cattle. We appreciate them so much.

Like always, if we can be of assistance to you or answer any questions please feel free to contact us. Videos will be available prior to the sale and cattle will be on display throughout the week of the sale. We look forward to sharing the 2023 Clear Choice Female Sale offering with you.



ClearWater Simmentals

Emmy Family



Bramlets/DBLG Emmy G930
Dam of Lots 1A, 1B, 1C, 1D

Lot 1A **Selling Choice**



JSUL Something About Mary 8421
Sire of Lots 1A & 1B



Lot 1B

CLEAR WATER SIMMENTALS

CLEAR WATER SIMMENTALS

1A

CLRWTR *Emmy* L9B

BD. 1/2/23 • ASA#. 4217785 • Purebred Open Heifer
Tattoo. L9B • Adj. BW. 85 lbs.

W/C RELENTLESS 32C

sire **JSUL SOMETHING ABOUT MARY 8421**

JBSF PROUD MARY

TJSC HAMMER TIME 35D

dam **BRAMLETS/DBLG EMMY G930**

BRAMLETS IMAGE D622

1B

CLRWTR *Emmy* L9C

BD. 1/3/23 • ASA#. 4217784 • Purebred Open Heifer
Tattoo. L9C • Adj. BW. 83 lbs.

W/C RELENTLESS 32C

sire **JSUL SOMETHING ABOUT MARY 8421**

JBSF PROUD MARY

TJSC HAMMER TIME 35D

dam **BRAMLETS/DBLG EMMY G930**

BRAMLETS IMAGE D622

| CE | BW | WW | YW | MCE | Milk | MWW | Marb | REA | API |
|------|-----|------|-------|-----|------|------|------|------|-------|
| 10.9 | 2.3 | 77.9 | 109.7 | 4.0 | 19.5 | 58.5 | 0.12 | 0.85 | 114.3 |

| CE | BW | WW | YW | MCE | Milk | MWW | Marb | REA | API |
|------|-----|------|-------|-----|------|------|------|------|-------|
| 11.1 | 1.7 | 76.8 | 114.2 | 3.8 | 19.5 | 57.9 | 0.11 | 0.92 | 122.7 |

Lots 1A, 1B, 1C, 1D: Perhaps the most buzzworthy donor female at the moment is Bramlets/DBLG Emmy G930. She just recently sold in Canada for \$110,000 half interest, after selling last October for \$45,000 here in the U.S. Her track record of wins during her show career was successful during her time as an open heifer and cow/calf pair for Luke Gilbert. Emmy was known for her deep, sweeping belly, her beautiful udder development, and her levelness and extension. We think all of these females carry these traits for their present and future development as impactful Simmental females. We are offering CHOICE on both set of matings – JSUL Something about Mary and Rocking P Private Stock. The winning bidder will take their choice, and Clear Water Simmentals will keep the other female from each mating to put into our herd to grow into a future donor for us. We are very excited about all four females, and think the decision is really a coin toss. We don't believe there is a wrong choice when having the opportunity to buy into genetics and females like this.

Emmy Family

Selling Choice

lot 1C

lot 1D



Rocking P Private Stock H010
Sire of Lots 1C & 1D

CLEAR WATER SIMMENTALS

CLEAR WATER SIMMENTALS

1C

CRWTR *Emmy* L9A

BD. 1/10/23 • ASA#. 4217787 • Purebred Open Heifer
Tattoo. L9A • Adj. BW. 86 lbs.

WLE COPACETIC E02
sire **ROCKING P PRIVATE STOCK H010**
RP/MP BUILT TO LOVE A021
TJSC HAMMER TIME 35D
dam **BRAMLETS/DBLG EMMY G930**
BRAMLETS IMAGE D622

1D

CLRWTR *Emmy* L9D

BD. 1/3/23 • ASA#. 4217781 • Purebred Open Heifer
Tattoo. L9D • Adj. BW. 79 lbs.

WLE COPACETIC E02
sire **ROCKING P PRIVATE STOCK H010**
RP/MP BUILT TO LOVE A021
TJSC HAMMER TIME 35D
dam **BRAMLETS/DBLG EMMY G930**
BRAMLETS IMAGE D622

| CE | BW | WW | YW | MCE | Milk | MWW | Marb | REA | API |
|------|------|------|-------|-----|------|------|------|------|-------|
| 13.6 | -0.8 | 68.2 | 100.6 | 5.7 | 17.9 | 51.9 | 0.11 | 0.90 | 129.7 |

| CE | BW | WW | YW | MCE | Milk | MWW | Marb | REA | API |
|------|------|------|------|-----|------|------|------|------|-------|
| 12.0 | -0.6 | 69.9 | 99.9 | 4.8 | 19.4 | 54.3 | 0.31 | 0.61 | 137.1 |

Miss Sugar Family



Lot 2A



DMCC Stockman 124J
Sire of Lot 2A



WS Miss Sugar C4
Dam of Lot 2B, Granddam of Lot 2A



Lot 2B

CLEAR WATER SIMMENTALS

CLEAR WATER SIMMENTALS

2A

CLRWTR *Sugar* L4F

BD. 2/15/23 • ASA#. 4217779 • 3/4 Simmental Open Heifer
Tattoo. L4F • Adj. BW. 84 lbs.

MUSGRAVE SKY HIGH 1535

sire **DMCC STOCKMAN 124J**

JASS BLING 01B

CDI INNOVATOR 325D

dam **CLRWTR SUGA H4C**

WS MISS SUGAR C4

2B

HLTS/CLRWTR *Sugar* K8

BD. 1/2/22 • ASA#. 4158758 • Purebred Bred Heifer
Tattoo. K8 • Adj. BW. 89 lbs.

WELSHS DEW IT RIGHT067T

sire **ES RIGHT TIME FA110-4**

ES A110

CLRS GRADE-A 875 A

dam **WS MISS SUGAR C4**

WS ANISE A71

| CE | BW | WW | YW | MCE | Milk | MWW | Marb | REA | API |
|------|-----|------|-------|-----|------|------|------|------|-------|
| 14.6 | 1.0 | 87.8 | 139.3 | 7.6 | 25.5 | 69.4 | 0.49 | 0.81 | 150.2 |

It has been no secret that we have highly admired the Miss Sugar C4 female, and have been lucky enough to have her impact influence our herd and our sales. L4F is the product of the Innovator x Sugar daughter we have retained in our herd. This Stockman open heifer has a bright future ahead of her as both a show heifer and as a future donor female. L4F has an exceptional set of EPDs as well to sweeten the package.

| CE | BW | WW | YW | MCE | Milk | MWW | Marb | REA | API |
|------|-----|------|-------|-----|------|------|------|------|-------|
| 13.0 | 0.7 | 92.0 | 146.3 | 6.5 | 25.5 | 71.4 | 0.53 | 0.87 | 171.7 |

Bred on 4/3/23 to Rocking P Private Stock (ASA# 3775641)

This is the FIRST Right Time sired daughter out of C4 to sell. She is a full sister to our \$100,000 & \$50,000 bulls that sold this spring. We think this one is what Simmental genetics are made of! K8 combines the best of both worlds – excellent conformation based on live evaluation as well as an excellent set of EPDs to back up her visual appeal. K8 ranks in the top 4% for API, TI, CW, the top 5% for ADG, MARB, and the top 10% for WW, YW, STAY, and DOC. This female is homo black and homo polled and bred up to Rocking P Private Stock.

True Love Family



S/P True Love F789
Dam of Lots 3A, 3B and 3C

Lots 3A, 3B & 3C: Our first offering out of our 2020 National Classic Reserve Champion female!! F789 exhibits everything you would like to see in a donor, powerful square hip, soft middle, big feet and legs, super sound at the ground, and incredibly attractive. These three daughters carry many of her traits but are all different in their own right. The one constant is how fluid they all are when you put them in motion. LH42 is the power female of the group, big feet, big legs, big top, big butt, and a tiny little neck. Her full sister, L36 is the broodiest female of the bunch, she has a little dewlap up front which she will grow in to, but still great in her lines and sappy bellied. The Remedy daughter, LC19 is the greenest of the three, but is very well balanced and has all the right pieces to lead around the ring.

Lot 3A

Lot 3B

Lot 3C

BESHEARS SIMMENTALS

BESHEARS SIMMENTALS

3A

BESH *Ms True Love* LH42

BD. 3/27/23 • ASA#. 4248397 • Purebred Open Heifer
Tattoo. LH42 • Adj. BW. 78 lbs.

BESHEARS SIMMENTALS

3B

BESH *Ms True Love* L36

BD. 4/1/23 • ASA#. 4248399 • Purebred Open Heifer
Tattoo. L36 • Adj. BW. 64 lbs.

YARDLEY UTAH Y361

sire **W/C RELENTLESS 32C**

MISS WERNING KP 8543U

W/C EXECUTIVE ORDER 8543B

dam **S/P TRUE LOVE F789**

HPF RIGHT TO LOVE 283C

3C

BESH *Ms True Love* LC19

BD. 4/7/23 • ASA#. 4248389 • Purebred Open Heifer
Tattoo. LC19 • Adj. BW. 82 lbs.

HPF/HILL UPRISING C104

sire **SO REMEDY 7F**

B&K CREAM SODA 8D

W/C EXECUTIVE ORDER 8543B

dam **S/P TRUE LOVE F789**

HPF RIGHT TO LOVE 283C

| CE | BW | WW | YW | MCE | Milk | MWW | Marb | REA | API |
|------|-----|------|-------|-----|------|------|------|------|-------|
| 12.1 | 0.8 | 86.4 | 139.3 | 4.8 | 21.7 | 64.8 | 0.05 | 0.85 | 120.3 |

| CE | BW | WW | YW | MCE | Milk | MWW | Marb | REA | API |
|------|-----|------|-------|-----|------|------|------|------|-------|
| 10.1 | 1.8 | 82.1 | 119.2 | 3.4 | 17.8 | 58.7 | 0.25 | 0.84 | 122.4 |

Northern Miss Family



Lot 4A

Haefner



DDA Northern Miss 2026
NWSS Division Champion Open & Jr. Shows
Dam of Lots 4A & 4B



Lot 4B

Haefner

CLEAR WATER SIMMENTALS

4A

CLRWTR *Payton* L26H

BD. 3/8/23 • ASA#. 4217788 • 1/2 Simmental Open Heifer
Tattoo. L26H • Adj. BW. 84 lbs.

CLEAR WATER SIMMENTALS

4B

CLRWTR *Priscilla* L26E

BD. 3/2/23 • ASA#. 4217778 • 1/2 Simmental Open Heifer
Tattoo. L26E • Adj. BW. 84 lbs.

LLSF PAYS TO BELIEVE ZU194

sire **SJW EXIT 44 7111E**

CMB YOLANDA Y658

S&R ROUNDTABLE J328

dam **DDA NORTHERN MISS 2026**

DAMERON NORTHERN MISS 0109

Dr. Anderson has been a longtime friend of Clear Water Simmentals and we value his opinion and knowledge for cattle. So, when we got involved with the DDA Northern Miss 2026 female, we knew that the future was bright for this young donor, and boy, she has not disappointed us with her first calf crop. These two Exit 44 daughters are some of the most eye-catching females in the sale. If you are looking for females that can compete in Percentage Simmental shows, you need to carefully consider these two March females.

| CE | BW | WW | YW | MCE | Milk | MWW | Marb | REA | API |
|------|-----|------|-------|-----|------|------|------|------|-------|
| 10.9 | 1.6 | 77.2 | 117.6 | 7.1 | 19.9 | 58.5 | 0.35 | 0.53 | 116.1 |

Andie Family



Lot 5A

Full Sister to Lot 5A



BESHEARS SIMMENTALS

5A

BESH *Ms Sandie* LA54

BD. 3/22/23 • ASA#. 4248395 • Purebred Open Heifer
Tattoo. LA54 • Adj. BW. 87 lbs.

W/C RELENTLESS 32C

sire **JSUL SOMETHING ABOUT MARY 8421**

JBSF PROUD MARY

MR HOC BROKER

dam **WHF ANDIE 365A**

PRS SUMMER W364



Lot 5B

WHF Andie 365A
Dam of Lots 5A & 5B
Granddam of Lot 5C



BESHEARS SIMMENTALS

5B

BESH/WHF *Ms Lucy* LE19

BD. 2/19/23 • ASA#. 4192625 • Purebred Open Heifer
Tattoo. LE19 • Adj. BW. 90 lbs.

WLE COPACETIC E02

sire **RP/BCR EMINENCE H005**

RP/MP BUILT TO LOVE A021

MR HOC BROKER

dam **WHF ANDIE 365A**

PRS SUMMER W364

| CE | BW | WW | YW | MCE | Milk | MWW | Marb | REA | API |
|------|-----|------|-------|-----|------|------|-------|------|-------|
| 10.8 | 3.2 | 82.9 | 121.6 | 5.0 | 25.6 | 67.0 | -0.09 | 0.89 | 115.7 |

| CE | BW | WW | YW | MCE | Milk | MWW | Marb | REA | API |
|------|-----|------|-------|-----|------|------|------|------|-------|
| 10.0 | 2.7 | 84.6 | 122.8 | 4.5 | 25.2 | 67.5 | 0.01 | 0.78 | 122.2 |

If you have followed the Simmental show circuit in the last 6 years or just the show circuit in general, then WHF Andie 365A or her daughters need no Introduction. Andie progeny have hung banners at almost every major venue on the circuit. WHF Andie 369K is the most recent winner. Winning the Iowa State Simmental show, 16th overall at the 2023 National Classic Simmental Show, and Reserve Champion at the 2023 Iowa State Fair Open Show. The progeny out of Andie daughters seems to be doing excellent as well WHF/CSS/JS Woodford has claimed division rights at American Royal, NAILE, and Cattlemen's Congress last year. Another grandson JS Double or Nothing 4K sold in Oklahoma City to the tune of 165K for half interest, last year. LA54 and LE19 are similar in kind. Both are excellent structured, soggy bodied and have hair to boot. They are built to show. LA54 is a full sib to 369K, and LE19 is out of RP/BCR Eminence H005 who has done an excellent job for Buck Creek Ranch and Conely. Consistency is in the blood bid with Confidence.

CLEAR WATER SIMMENTALS

5C

CLRWTR *Andie* K365

BD. 2/20/22 • ASA#. 4158501 • Purebred Bred Heifer
Tattoo. K365 • Adj. BW. 87 lbs. • Adj. WW. 587 lbs.

CCR ANCHOR 9071B

sire **LLSF VANTAGE POINT F398**

HPF RITE 2 LUV 398D

CDI INNOVATOR 325D

dam **CLRWTR ANDIE G365**

WHF ANDIE 365A

| CE | BW | WW | YW | MCE | Milk | MWW | Marb | REA | API |
|------|-----|------|-------|-----|------|------|------|------|-------|
| 10.9 | 2.4 | 88.9 | 137.1 | 5.5 | 26.3 | 70.7 | 0.29 | 0.81 | 132.2 |

Bred 3/22/23 to Rocking P Private Stock (ASA# 3775641)

Here is an exceptional bred female that is backed on the bottom side by the great WHF Andie 365A that is owned by Beshears Simmentals and Wayward Hill. K365's dam is a young female in our herd whom we are excited to see her future impact especially if K365 is just the beginning. K365 ranks in the top 15% for YW, the top 20% for WW, and the top 25% for MWW, ADG, and CW. This homo polled female is bred to Rocking P Private Stock.



Lot 5C

Hasler

Missy Family



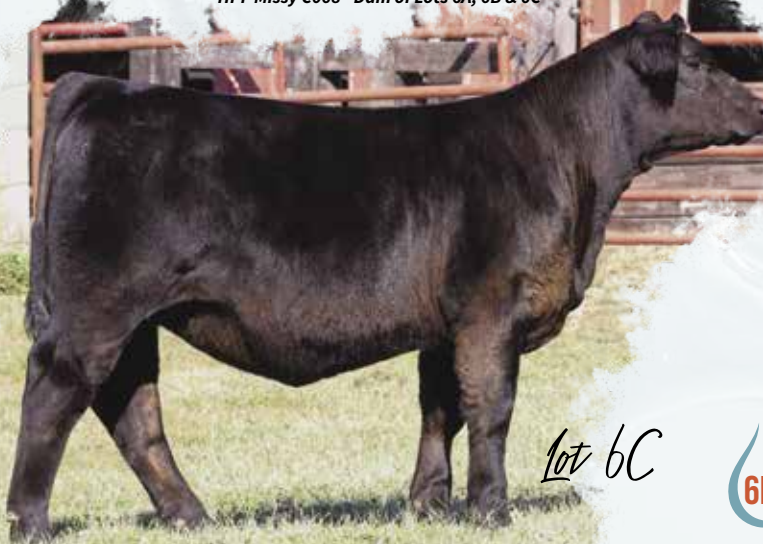
Lot 6A



HPF Missy C068 - Dam of Lots 6A, 6B & 6C



Lot 6B



Lot 6C

Lots 6A, 6B & 6C: HPF Missy C068 has made an excellent impact on our program over the last few years, and even though we sold her to our friends at Sporleder Show Cattle last year, we are still feeling her effect ripple through our program. With progeny like these three heifers, it is easy to see why. LH1 and LD7 are full sibs out of Entourage and are similar in their make-up, deep, lots of shape, sound, and sleek necked. If you like them broody then LF37 is your type, long bodied, big Footed, and sound. C068 progeny are no strangers to The Clear Choice Bull or Female Sale, having many of our high sellers including bulls going to our friends at Buck Creek Ranch and JS Simmentals and last year's high selling and 3rd high selling female going to Cash Rumble and Charity Moore, respectively.

BESHEARS SIMMENTALS



BESH *Ms Missy* LD57

BD. 5/4/23 • ASA#. 4248388 • Purebred Open Heifer
Tattoo. LD57 • Adj. BW. 90 lbs.

BESHEARS SIMMENTALS



BESH *Ms Missy* LH1

BD. 4/18/23 • ASA#. 4248387 • Purebred Open Heifer
Tattoo. LH1 • Adj. BW. 92 lbs.

KCC1 EXCLUSIVE 116E

sire WHF ENTOURAGE H450

WHF DELILAH 45D

RGRS SRG TWO STEP 20Z ET

dam HPF MISSY C068

WLE MISSY U409



BESH *Ms Missy* LF37

BD. 1/2/23 • ASA#. 4248394 • Purebred Open Heifer
Tattoo. LF37 • Adj. BW. 80 lbs.

W/C DOUBLE DOWN 5014E

sire WHF/JS/CCS DOUBLE UP G365

WHF SUMMER 365C

RGRS SRG TWO STEP 20Z ET

dam HPF MISSY C068

WLE MISSY U409

| CE | BW | WW | YW | MCE | Milk | MWW | Marb | REA | API |
|-----|-----|------|-------|-----|------|------|-------|------|-------|
| 9.3 | 2.6 | 80.4 | 104.9 | 3.9 | 19.0 | 59.1 | -0.04 | 0.73 | 109.0 |

| CE | BW | WW | YW | MCE | Milk | MWW | Marb | REA | API |
|------|-----|------|------|-----|------|------|------|------|-------|
| 10.3 | 2.0 | 74.1 | 97.6 | 3.6 | 16.6 | 53.5 | 0.14 | 0.80 | 118.5 |

Blaze Family



Lot 7B



Lot 7C



Miss AF Blaze - Dam of Lots 7A, 7B & 7C



Lot 7A

Lots 7A, 7B & 7C: Blaze is a full sib to the one they call Diddo down at C&C Farms in Jefferson, Georgia. She has done very well for our friends Madyson McDaniel and Steven Cooper both in the show ring and producing progeny. For no reason other than logistics and we may need a mental evaluation we have not put many of these embryos away. After weaning this year's calves that will not be the case from now on. LG47 has been a favorite of mine all summer long, and although LH95 has a little more throat, her running gear, hair, and overall shape and dimension provide her with a lot of big-time pieces. The Bred is one that we hated to pull from the replacement pen but felt it was necessary to help highlight our Breds. With her shape, bone, and feet that mating to sexed clear advantage could be big time!

BESHEARS SIMMENTALS

7B

BESH *Ms Blaze* LG47

BD. 1/17/23 • ASA#. 4248391 • 3/4 Simmental Open Heifer
Tattoo. LG47 • Adj. BW. 81 lbs.

BESHEARS SIMMENTALS

7C

BESH *Ms Blaze* KE15

BD. 3/2/22 • ASA#. 4093512 • 3/4 Simmental Bred Heifer
Tattoo. KE15 • Adj. BW. 97 lbs.

MR TR HAMMER 308A ET

sire **TMAS CAN`T TOUCH THIS 8531F**

J6RA 606B

FBF1 COMBUSTIBLE

dam **MISS AF BLAZE**

JAS JESTRESS 9015

7A

BESH *Ms Blaze* LH95

BD. 2/13/23 • ASA#. 4248400 • 3/4 Simmental Open Heifer
Tattoo. LH95 • Adj. BW. 67 lbs.

W/C RELENTLESS 32C

sire **JSUL SOMETHING ABOUT MARY 8421**

JBSF PROUD MARY

FBF1 COMBUSTIBLE

dam **MISS AF BLAZE**

JAS JESTRESS 9015

BESHEARS SIMMENTALS

| CE | BW | WW | YW | MCE | Milk | MWW | Marb | REA | API |
|------|-----|------|-------|-----|------|------|------|------|-------|
| 14.2 | 1.4 | 77.5 | 121.6 | 6.5 | 17.6 | 56.2 | 0.17 | 0.83 | 133.7 |

| CE | BW | WW | YW | MCE | Milk | MWW | Marb | REA | API |
|-----|-----|------|-------|-----|------|------|------|------|-------|
| 9.5 | 3.3 | 84.8 | 132.2 | 3.5 | 15.4 | 57.7 | 0.15 | 0.86 | 114.0 |

Lot 7C: AI'd to CLRWTR Clear Advantage on 4/20/23. Confirmed Safe. PE Besh Bull K87 (ASA#4093509) from 5/8/23-7/16/23.

Ethel Family

Selling Choice

lot 8A

lot 8B



BESH Ethel W24
Dam of Lots 8A & 8B

BESHEARS SIMMENTALS

8A

BESH *Ms Ethel* LG14

BD. 2/18/23 • ASA#. 4248393 • Purebred Open Heifer
Tattoo. LG14 • Adj. BW. 78 lbs.

BESHEARS SIMMENTALS

8B

BESH *Ms Ethel* L2

BD. 3/1/23 • ASA#. 4248396 • Purebred Open Heifer
Tattoo. L2 • Adj. BW. 71 lbs.

sire CCS/WHF OL`SON 48F

WHF POINT PROVEN H45

WHF DELILAH 45D

BESHEARS TRUE MANT7

dam **BESH ETHEL W24**

BESHEARS NEW YEARS EVE

As many of you know, Ethel was a mainstay donor in our program until last year when she passed. And as some of you remember I wrote last year's opens would PROBABLY be the last opens out of her to go through this sale ring. That was before I knew we would have 2 heifers of this caliber on 2 embryos out of the red hot WHF Point Proven owned by Trennepohl Farms and Wayward Hill Farms. This was the last bull we flushed Ethel to, and just like she ended her show career, she ended her cow career going out with a bang. These two females are long spined, sound, and fancy. You take one home, and we will keep the other to live at our place.

| CE | BW | WW | YW | MCE | Milk | MWW | Marb | REA | API |
|------|-----|------|-------|-----|------|------|------|------|-------|
| 12.6 | 1.1 | 72.5 | 103.7 | 8.1 | 20.6 | 56.8 | 0.04 | 0.89 | 123.7 |

Blackbird C364 Family



Lot 9

Haefner



Jordan

Lot 10

Dam of Lot 9 & Donor Dam of Lot 10

CLEAR WATER SIMMENTALS

LUCKY PENNY CATTLE COMPANY

9

CLRWTR *Splash* L364C

BD. 1/14/23 • ASA#. 4217782 • Purebred Open Heifer
Tattoo. L364C • Adj. BW. 88 lbs.

HPF QUANTUM LEAP Z952

sire **WLE COPACETIC E02**

CMFM JOY 02ZB

RGRS SRG TWO STEP 20Z ET

dam **DAF BLACKBIRD C364**

DAF BLACKBIRD A164

10

DAF *Blackbird* C364 *Embryos*

BD. 3/3/15 • ASA#. 2994717 • Purebred Donor • Embryos

RECKONING 711F

sire **JSUL DARE 2 COMPARE 2312K**

JSUL MARY IS PROUD 8047F

RGRS SRG TWO STEP 20Z ET

dam **DAF BLACKBIRD C364**

DAF BLACKBIRD A164

| CE | BW | WW | YW | MCE | Milk | MWW | Marb | REA | API |
|------|-----|------|-------|-----|------|------|------|------|-------|
| 12.7 | 1.7 | 83.2 | 116.8 | 6.3 | 18.8 | 60.3 | 0.14 | 0.82 | 128.3 |

We might kick ourselves later for selling this female. L364C is an open female that we continue to like more and more each day as she grows. Her striking blaze face and her level top, and deep belly keep us on our toes. Her dam DAF Blackbird C364 sold for \$10,000 in last year's sale to our good friends Lucky Penny Cattle Company. C364 has had several standouts for us over the years, and we believe that L364C just might be one of the best. A January, homo black, and homo polled open heifer ready for a halter and the tanbark.

| CE | BW | WW | YW | MCE | Milk | MWW | Marb | REA | API |
|------|-----|------|-------|-----|------|------|------|-------|-------|
| 10.7 | 1.9 | 77.0 | 107.9 | 4.7 | 16.4 | 55.0 | 0.18 | -0.07 | 127.0 |

Selling 3 IVF Reverse Sort Female embryos

We are offering reverse sorted female embryos out of our newest donor that we purchased as the highest selling lot in Clearwater's 2022 fall sale. She has a long list of high quality calves that have been sold in the past; these being no different. This mating combines fresh, high quality genetics. Guaranteeing one 90 day pregnancy.

Open Heifers



Lot 11

11

CLRWTR *Lady Like* L5105F

BD. 1/24/23 • ASA#. 4217786 • Purebred Open Heifer
Tattoo. L5105F • Adj. BW. 71 lbs.

W/C BANKROLL 811D

sire **W/C BANK ON IT 273H**

KS MISS SEQUOIA Y770

CCR WIDE RANGE 9005A

dam **CLRWTR LADY C5105X**

CLRWTR JOYS SHADES

| CE | BW | WW | YW | MCE | Milk | MWW | Marb | REA | API |
|------|-----|------|-------|-----|------|------|-------|------|-------|
| 13.5 | 0.2 | 74.5 | 105.0 | 8.4 | 21.3 | 58.5 | -0.10 | 1.11 | 122.6 |

If you have watched our program over the years, you will know that the Joy cow family has had a big influence on our herd. L5105F is the product of using tried and trusted genetics from our herd, and matching them with a new, influential Simmental herd sire like Bank on It. This full face baldy, homo polled female ranks in the top 10% for REA, top 15% for MCE, and the top 25% for CE.

CLEAR WATER SIMMENTALS



Lot 12

12

CLRWTR *Special Vintage* L93

BD. 1/20/23 • ASA#. 4217783 • Purebred Open Heifer
Tattoo. L93 • Adj. BW. 94 lbs.

LLSF VANTAGE POINT F398

sire **CLRWTR CLEAR ADVANTAGE H4G**

WS MISS SUGAR C4

MR CCF VISION

dam **CLRWTR FINE WINE E93B**

HTP SVF DEW THE STROKE

| CE | BW | WW | YW | MCE | Milk | MWW | Marb | REA | API |
|------|-----|------|-------|-----|------|------|------|------|-------|
| 12.2 | 1.9 | 93.9 | 140.5 | 5.2 | 24.9 | 71.8 | 0.27 | 0.97 | 141.5 |

You have heard us say it before, but we have been VERY pleased with the Clear Advantage calves. This homo polled and homo black January, solid black female goes back to a pedigree that has been very successful for C&C Farms. HTP SVF Dew the Stroke and Mr. CCF Vision are household names in the Cooper program, and continue to have strong influence on their operation, and we are glad we were able to acquire embryos on that mating. L93 ranks in the top 15% for WW, top 20% for YW, DOC, TI, and the top 25% for MWW, and SHR. This female is going to combine the structural correctness and genetic merit to be influential for years to come.

CLEAR WATER SIMMENTALS



Lot 13



13

BESH *Ms Lotsa Love* L029

BD. 1/9/23 • ASA#. 4248392 • Purebred Open Heifer
Tattoo. L029 • Adj. BW. 90 lbs.

REMINGTON LOCK N LOAD54U

sire **W/C HOC HCC RED ANSWER 33B**

MISS WERNING KP 8543U

JF MILESTONE 999W

dam **HPF LOTSA LOVE B422**

RP/MP RIGHT TO LOVE 015U

Projected EPDs

| CE | BW | WW | YW | MCE | Milk | MWW | Marb | REA | API |
|------|-----|------|-------|-----|------|------|------|------|-------|
| 10.1 | 0.6 | 74.4 | 103.0 | 5.5 | 23.5 | 60.6 | 0.14 | 0.87 | 122.0 |

I remember watching Lotsa Love and her progeny walk through this sale ring. I thought she was one we let get away. Almost every time we see embryos sale out of her we have either bid or bought them. I have liked L029 from day one Stout, sound, and freaky necked just like her mother. She did not want to cooperate in the picture pen, but she is still a female worth driving to look at.

BESHEARS SIMMENTALS

Open Heifers

BESHEARS SIMMENTALS

14

BESH *Ms Unie* LA24

BD. 2/5/23 • ASA#. 4167890 • 1/2 Simmental Open Heifer
Tattoo. LA24 • Adj. BW. 96 lbs.

SCC TRADITION OF 24
sire **SCC SCH 24 KARAT 838**
FCF PROVEN QUEEN 419
HARA'S DISTINCTION 10C
dam **BESH MS UNIE FX29**
BESH MS UNANIMOUS X29

| CE | BW | WW | YW | MCE | Milk | MWW | Marb | REA | API |
|-----|-----|------|-------|-----|------|------|------|------|------|
| 5.6 | 4.3 | 81.4 | 118.5 | 1.6 | 21.7 | 62.4 | 0.02 | 0.69 | 91.3 |

LA24 has all the right lines to make a great one, she just needs a little time. Long necked, big boned, big footed, long spined, and plenty of belly. Her Dam was an up-and-coming donor for us before her life tragically ended.



CLEAR WATER SIMMENTALS

15

CLRWTR *Reddi Or Not* L532

BD. 2/12/23 • ASA#. 4217780 • Purebred Open Heifer
Tattoo. L532 • Adj. BW. 83 lbs.

W/C EXECUTIVE ORDER 8543B
sire **FELT PERSEVERANCE 302F**
RUBYS RHYTHM Z231
FBFS WARSAW 068W
dam **CLRWTR MS REDDI W532**
ZF MISS REDDI 532C

| CE | BW | WW | YW | MCE | Milk | MWW | Marb | REA | API |
|------|-----|------|-------|-----|------|------|-------|------|-------|
| 14.2 | 0.7 | 78.2 | 117.1 | 7.9 | 25.4 | 64.5 | -0.19 | 0.97 | 119.7 |

This solid black female comes with a little different pedigree than most in the Clear Choice Sale. If you extend out her pedigree, she goes back on the bottom side to the past National Western Stock Show Champion SVF Reddy or Not M600, who was a beautiful red female. Of course, her dam W532 is a Warsaw daughter, and we love our Warsaw daughters here at Clear Water. L532 is a well-balanced, nice necked female with a lot of potential. Her CE and MCE numbers will help you sleep better in the future as well.



BESHEARS & RUMPLE SIMMENTALS

16

BESH-RUMPLE *Leap*

BD. 3/25/23 • ASA#. 4238180 • Purebred Open Heifer
Tattoo. L313 • Adj. BW. 63 lbs.

HTP/SVF DURACELL T52
sire **HPF QUANTUM LEAP Z952**
RP/MP RIGHT TO LOVE 015U
OBCC CMFM DEPLORABULL D148
dam **BESH MS ELAMOR**
BESH ETHEL W24

| CE | BW | WW | YW | MCE | Milk | MWW | Marb | REA | API |
|------|-----|------|-------|-----|------|------|------|------|-------|
| 11.4 | 2.1 | 79.9 | 115.3 | 4.9 | 20.9 | 60.8 | 0.05 | 0.85 | 112.7 |

L313 is a granddaughter of our beloved Ethel cow. She is deep bodied, with lots of extension up front. She has a great disposition and is out of the ever so popular Quantum Leap. If you are looking for a very gentle project for a junior, look no further.



Open Heifers

BESHEARS SIMMENTALS



Lot 17

17

BESH *Ms Tina* LE29

BD. 4/12/23 • ASA#. 4248386 • Purebred Open Heifer
Tattoo. LE29 • Adj. BW. 77 lbs.

LLSF VANTAGE POINT F398

sire **CLRWTR CLEAR ADVANTAGE H4G**

WS MISS SUGAR C4

CCR SANTA FE 9349Z

dam **BESH MS TINA E029**

HPF/BORNE KNOCKOUT Y030

| CE | BW | WW | YW | MCE | Milk | MWW | Marb | REA | API |
|------|-----|------|-------|-----|------|------|------|------|-------|
| 12.0 | 0.1 | 86.8 | 129.4 | 7.2 | 22.6 | 66.0 | 0.26 | 0.78 | 138.1 |

This gal was hard to put in the sale. When we bought half of Clear Advantage the plan was to hoard all the daughters for our own herd. Then Leah put a guilt trip on me for not having one in the sale. So, I thought we better make it a good one. LE29's mother is probably the best cow on the farm not in the donor pen. LE29 has a very respectable set of numbers and an even better phenotype. Thanks Leah!

Embryo
Heifer
Fall Pair



SO Remedy 7F
Sire of Lot 18

B-C Lookin Sharp 7002E - Dam of Lot 18

LUCKY PENNY CATTLE COMPANY

LUCKY PENNY CATTLE COMPANY

18

NAHF *Sharp Lady* 314L

BD. 9/1/23 • ASA#. 4246050 • Purebred Open Heifer
Tattoo. 314L • Adj. BW. 90 lbs.

HPF/HILL UPRISING C104

sire **SO REMEDY 7F**

B&K CREAM SODA 8D

HILB ORACLE C033R

dam **B-C LOOKIN SHARP 7002E**

PRS LOOK OF H25 W264

Projected EPDs

| CE | BW | WW | YW | MCE | Milk | MWW | Marb | REA | API |
|------|-----|------|-------|-----|------|------|-------|------|-------|
| 13.1 | 2.2 | 78.6 | 123.2 | 5.3 | 18.8 | 58.1 | -0.06 | 0.84 | 114.6 |

This heifer calf is one we probably shouldn't be selling; however, we wanted to offer one of our best for the fall sale. She is a stout long bodied heifer that has loads of potential to be an outstanding show heifer and an even better donor cow! A maternal sib was recently named Supreme Simmy Heifer at Minnesota State Fair. As an added bonus, her 5 year old recip has taken an egg almost yearly. Seller is retaining 2 successful flushes at buyers convenience, sellers expense.

18A

NAHF *Luckys Sara* 803F

BD. 1/2/18 • ASA#. 3486456 • 3/4 Simmental Cow
Tattoo. 803F • Adj. BW. 63 lbs. • Adj. WW. 671 lbs.

HOOVER DAM

sire **CCR BOULDER 1339A**

CCR MS L TAYLOR 1339Y

FBFS WARSAW 068W

dam **NAHF LUCKYS SARA 546C**

SVF SARA W148

| CE | BW | WW | YW | MCE | Milk | MWW | Marb | REA | API |
|------|------|------|-------|------|------|------|------|------|-------|
| 15.9 | -2.3 | 66.2 | 100.3 | 10.0 | 22.2 | 55.3 | 0.25 | 0.72 | 133.2 |

Recipient mother of Lot 24. Sells open.

THE CLEAR CHOICE spotlight Customer Junior Show

April 24, 2024 • Milan, IN

CLEAR CHOICE SALE FACILITY • FOLLOWING THE CLEAR CHOICE CUSTOMER SALE

\$3,000 GRAND CHAMPION • \$1,500 RESERVE CHAMPION

This show is NO FIT and you will be showing off of your trailer. No barn space will be available due to the sale. Ample parking space is available.

Monetary award and sale credit will be awarded to every animal shown.

Youth ages 8 through 21 as of January 1, 2024 are eligible, animal must be registered in the junior's name at purchase.

***Females must be purchased from a 2023 Clear Choice Sale
or the 2024 Clear Choice Customer Sale.***

**LOOK FOR FURTHER DETAILS THIS FALL
• ENTRIES OPEN SPRING 2024 •**

**FOR INFORMATION ON ENTRIES PLEASE CONTACT
HOLLI HATMAKER • 859-707-5248 • HOLLI@DPSALESLLC.COM**

FOR ADDITIONAL INFORMATION CONTACT

ClearWater Simmentals, Jeff & Leah Meinders • Leah. 812-498-2840

DP Sales Management • Doug Parke. 812-881-9381

Beshears Simmentals • Bobby Beshears. 765-717-4789

Lucky Penny Cattle Co. • Nate Hoeing. 765-561-3178

Neal Brothers • Joe Neal. 812-881-9381

Tommy Carper. 540-336-2737

Embryos



Lot 19

CLEAR WATER SIMMENTALS



Lot 20

CLEAR WATER SIMMENTALS & BARRON SIMMENTALS



OMF/DK *Josie* 31J *Embryos*

BD. 3/21/21 • ASA#. 3893509 • Purebred Donor • Embryos

W/C BANKROLL 811D
sire **W/C BANK ON IT 273H**
 KS MISS SEQUOIA Y770
 BRIDLE BIT BEST MAN F839
dam **OMF/DK JOSIE 31J**
 OMF/DK GINGER G50



Bramlets *Beautiful* Z223 *Embryos*

BD. 10/14/12 • ASA#. 2738858 • Purebred Donor • Embryos

CCR ANCHOR 9071B
sire **LLSF VANTAGE POINT F398**
 HPF RITE 2 LUV 398D
 HTP SVF IN DEW TIME
dam **BRAMLETS BEAUTIFUL Z223**
 HPF MS BEAUTIFUL S054

| CE | BW | WW | YW | MCE | Milk | MWW | Marb | REA | API |
|------|-----|------|-------|-----|------|------|------|------|-------|
| 11.5 | 0.9 | 80.8 | 116.2 | 5.4 | 22.0 | 62.3 | 0.13 | 1.06 | 125.0 |

Selling 3 conventional embryos

We are always trying to keep an eye out for new and interesting genetics to add to our operation. When we went to Oak Meadow's Production Sale this past Spring we didn't plan on coming home with a female, but OMF/DK Josie 31J caught our eye and was destined to reside in Milan. We love her outcross pedigree from anything that we have in our herd, and her striking red coat and EPD profile just add to her desire. We are offering 3 conventional embryos guaranteeing 1 pregnancy sired by W/C Bank on It on the newest donor here at Clear Water Simmentals.

| CE | BW | WW | YW | MCE | Milk | MWW | Marb | REA | API |
|------|-----|------|-------|-----|------|------|------|------|-------|
| 13.1 | 1.0 | 80.0 | 122.5 | 5.4 | 20.2 | 60.1 | 0.07 | 0.70 | 120.0 |

Selling 3 conventional embryos

Z223 is a testament to some of the genetics that helped put the Bramlet program on the map in their early days. The HPF Ms. Beautiful S054 influence on their herd was a great foundation to build upon and sell great females. Z223 was recognized by Nick Sloup where she spent several successful years in embryo transplant for him before returning back to the Bramlet program. Our good friends at Barron Simmentals asked us to join them on this female and we were excited to be a part of this female's future. Z223 is homozygous black and heterozygous polled, and we are offering 3 conventional embryos guaranteeing 1 pregnancy by LLSF Vantage Point.

Bred Heifers

Lots: 21A, 21B, 21C: SS Emberly has been making her mark on the Clear Choice Sales in her short time in production. The SS Emberly calves have been well received by Simmental breeders with a bull selling in our bull sale for \$16,500 to Barron Simmentals. While these three bred females are very similar in their overall physical make up, there are small differences that make them the right female for your herd. All three are backed by proven sires and are bred to have longevity in your herd for years to come. K303 and K303B are both bred to Rocking P Private Stock, and K303E has been bred by TJ Rage for a calf with exceptional EPDs. All three of them are available at the Clear Choice Sale; you just have to make the difficult choice which to take home.

CLEAR WATER SIMMENTALS & HTP SIMMENTALS

21A

CLRWTR HTP *Emberly* K303B

BD. 1/3/22 • ASA#. 4158505 • 3/4 Simmental Bred Heifer
Tattoo. K303B • Adj. BW. 88 lbs. • Adj. WW. 649 lbs.

W/C LOADED UP 1119Y

sire **W/C PINNACLE E80**

MISS WERNING KP 8543U

PVF INSIGHT 0129

dam **SS EMBERLY E303**

SVF NJC MAGNETIC LDY M25

| CE | BW | WW | YW | MCE | Milk | MWW | Marb | REA | API |
|------|-----|------|-------|-----|------|------|------|------|-------|
| 12.0 | 0.9 | 72.3 | 100.5 | 6.0 | 24.8 | 60.9 | 0.02 | 1.03 | 113.8 |

Bred 4/6/23 Rocking P Private Stock (ASA#3775641)



Lot 21A

CLEAR WATER SIMMENTALS & HTP SIMMENTALS

21B

CLRWTR HTP *Emberly* K303

BD. 1/16/22 • ASA#. 4158532 • 3/4 Simmental Bred Heifer
Tattoo. K303 • Adj. BW. 90 lbs. • Adj. WW. 624 lbs.

TJ TEARDROP 783F

sire **TJ RAGE 437H**

TJ 92C

PVF INSIGHT 0129

dam **SS EMBERLY E303**

SVF NJC MAGNETIC LDY M25

| CE | BW | WW | YW | MCE | Milk | MWW | Marb | REA | API |
|------|-----|------|-------|-----|------|------|------|------|-------|
| 10.6 | 1.6 | 79.5 | 115.4 | 5.5 | 30.4 | 70.1 | 0.15 | 0.85 | 131.8 |

Bred 3/28/23 Rocking P Private Stock (ASA#3775641)



Lot 21B

CLEAR WATER SIMMENTALS & HTP SIMMENTALS

21C

CLRWTR HTP *Emberly* K303E

BD. 2/25/22 • ASA#. 4158481 • 3/4 Simmental Bred Heifer
Tattoo. K303E • Adj. BW. 77 lbs. • Adj. WW. 587 lbs.

HPF/HILL UPRISING C104

sire **SO REMEDY 7F**

B&K CREAM SODA 8D

PVF INSIGHT 0129

dam **SS EMBERLY E303**

SVF NJC MAGNETIC LDY M25

| CE | BW | WW | YW | MCE | Milk | MWW | Marb | REA | API |
|------|-----|------|-------|-----|------|------|-------|------|-------|
| 11.8 | 1.5 | 75.5 | 117.5 | 5.7 | 23.3 | 61.0 | -0.08 | 1.00 | 108.4 |

Bred PE TJ Rage (ASA#3762954) 5/15/23 to 6/21/23



Lot 21C

Bred Heifers

CLEAR WATER SIMMENTALS

22

CLRWTR *Penny* K373

BD. 1/20/22 • ASA#. 4158508 • 3/4 Simmental Bred Heifer
Tattoo. K373 • Adj. BW. 85 lbs. • Adj. WW. 588 lbs.

W/C LOADED UP 1119Y

sire **W/C PINNACLE E80**

MISS WERNING KP 8543U

TL BOTTOMLINE

dam **BFJV MS BOTTOMLINE H373**
400NL

| CE | BW | WW | YW | MCE | Milk | MWW | Marb | REA | API |
|------|-----|------|------|-----|------|------|------|------|-------|
| 12.0 | 0.8 | 67.4 | 93.7 | 5.3 | 21.8 | 55.4 | 0.02 | 0.71 | 108.3 |

Bred 4/3/23 CLRWTR Clear Advantage (ASA#3858588), sexed female semen

When Bruhn Farms in Iowa dispersed we were able to bring home several females to our program. K373's dam is one of those females. This blood female we believe will be an exceptional asset to any herd. Deep bodied, level topped, nice hiped, and sound will keep this female in production for years to come. She ranks in the top 3% for BF, and the top 4% for YG. Look forward to her calf out of the \$35,000 CLRWTR Clear Advantage.



Lot 22

CLEAR WATER SIMMENTALS

23

CLRWTR *Special Lady* K508

BD. 1/9/22 • ASA#. 4158533 • Purebred Bred Heifer
Tattoo. K508 • Adj. BW. 81 lbs. • Adj. WW. 546 lbs.

CDI ABUNDANCE 391C

sire **LCDR INTRIGUE 749E**

KBHR CHERRY C086

HPF/HILL UPRISING C104

dam **CLRWTR SPECIAL LADY G508**
HPF CIRT MS SPECIAL T508

| CE | BW | WW | YW | MCE | Milk | MWW | Marb | REA | API |
|------|-----|------|------|-----|------|------|------|------|-------|
| 11.4 | 1.0 | 62.0 | 96.2 | 7.9 | 23.7 | 54.6 | 0.37 | 0.50 | 132.8 |

Bred 3/29/23 THSF Lover Boy (ASA#2983443)

Here is a solid black purebred female that offers something a little different in terms of her pedigree. Her sire LCDR Intrigue is a stout, big boned, rugged cherry red bull owned by Lazy C Diamond Simmentals and Bichler Simmentals. Intrigue is known for improving carcass numbers and being a trait leader for marbling which is evident as K508 ranks in the top 15% for Marb. K508 is hetero black allowing you the flexibility to make black or red calves depending on your market.



Lot 23

BESHEARS SIMMENTALS

24

BESH *Ms Caliente* K904

BD. 1/4/22 • ASA#. 4093464 • Purebred Bred Heifer
Tattoo. K904 • Adj. BW. 93 lbs.

CCR ANCHOR 9071B

sire **LLSF VANTAGE POINT F398**

HPF RITE 2 LUV 398D

SAC MR MT 73G

dam **GCF MISS CALIENTE**
SS ME TOO L06

Projected EPDs

| CE | BW | WW | YW | MCE | Milk | MWW | Marb | REA | API |
|------|-----|------|------|-----|------|------|------|------|-------|
| 12.3 | 1.2 | 64.2 | 98.5 | 3.0 | 22.4 | 54.5 | 0.11 | 0.78 | 110.1 |

PE to Besh Bull K87 (ASA#4093509) from 5/8/23-7/16/23. Confirmed Safe.

The Vantage Points of both sexes have done well. Several years at the bull sale his sons were among the sales toppers. The reports have been good from those customers. K904 is a half-sister to STF Onyx and is very complete in her overall design. This young bred is smooth made and good from the ground up. The cow family is proven, and you can't get enough of the predictable ones specially using different sires in the industry.



Lot 24

Bred Heifers

CLEAR WATER SIMMENTALS

25

CLRWTR *Sheza Bonnie* K61

BD. 1/14/22 • ASA#. 4158493 • Purebred Bred Heifer
Tattoo. K61 • Adj. BW. 90 lbs. • Adj. WW. 673 lbs.

CCR COWBOY CUT 5048Z

sire **WS PROCLAMATION E202**

WS MISS SUGAR C4

MR CCF VISION

dam **CLRWTR SHEZA BONNIE B61A**

MISS CCF SHEZA BONNIEY61

| CE | BW | WW | YW | MCE | Milk | MWW | Marb | REA | API |
|------|-----|------|-------|-----|------|------|------|------|-------|
| 11.0 | 1.3 | 90.0 | 133.0 | 4.3 | 25.3 | 70.2 | 0.31 | 0.88 | 144.1 |

Bred 4/12/23 WHF/JS/CCS Double Up (ASA#3658592)

Sheza Bonnie is a household name for C&C Farms in Georgia as she took home a banner at the NAILE, and has nearly 100 calves registered on her cow card. K61 has the sleekness and style of Sheza Bonnie combined with the power and genetic merit Proclamation brings to the table. K61 ranks in the top 10% for CW, SHR, top 15% for WW, MWW, TI, and the top 20% for YW. Overall her EPD profile is impressive across the board. Her calf by WHF/JS/CCS Double Up should be an exciting mix of numbers, pedigree, and phenotype.



Lot 25

CLEAR WATER SIMMENTALS

26

CLRWTR *Mina* K50

BD. 1/17/22 • ASA#. 4158520 • 3/4 Simmental Bred Heifer
Tattoo. K50 • Adj. BW. 77 lbs. • Adj. WW. 603 lbs.

WS PILGRIM H182U

sire **LKCC BOLD VENTURE 194F**

MS CRYSTEEL VOLTAGE 194A

PRS BLAZIN HOT W192

dam **RHODES MINA Y50**

RHODES MINA 347

| CE | BW | WW | YW | MCE | Milk | MWW | Marb | REA | API |
|------|------|------|------|-----|------|------|------|------|-------|
| 14.3 | -0.5 | 68.5 | 94.9 | 7.9 | 17.8 | 52.0 | 0.19 | 0.49 | 123.3 |

Bred 5/5/23 WHF/JS/CCS Double Up (ASA#3658592)

When we saw LKCC Bold Venture at the 2021 Cattleman's Congress, we knew we had to sample him in our herd. A son of Pilgrim and going back to the \$114,000 BF Miss Crysteel Tango, his pedigree is impeccable and made of Simmental legends. Here with K50 we have combined a top side with sleekness and style with a bottom side that is predictable and cow oriented. She is bred to Double Up, known for his outstanding look and phenomenal structure, the calf should be an asset to your herd.



LKCC Bold Venture 194F - Sire of Lot 26



Lot 26

CLEAR WATER SIMMENTALS

27

CLRWTR *Chica* K123

BD. 1/18/22 • ASA#. 4158482 • 3/4 Simmental Bred Heifer
Tattoo. K123 • Adj. BW. 109 lbs. • Adj. WW. 728 lbs.

CDI ABUNDANCE 391C

sire **LCDR INTRIGUE 749E**

KBHR CHERRY C086

TJ SHARPER IMAGE 809U

dam **CLRWTR CHICA A123**

CLRWTR JOYS CHICA X123A

| CE | BW | WW | YW | MCE | Milk | MWW | Marb | REA | API |
|-----|-----|------|-------|-----|------|------|------|------|-------|
| 6.5 | 4.9 | 90.7 | 140.6 | 4.8 | 29.5 | 74.8 | 0.39 | 0.67 | 127.5 |

Bred 3/20/23 THSF Lover Boy (ASA#2983443)

One of the few red females in the offering is a daughter of LCDR Intrigue; the big, stout, perfect footed cherry red herd sire in the Dakotas. K123 is taking after her sire and will be raising cattle that grow well and pack the pounds. K123 ranks in the top 4% for MWW, top 10% for WW, Milk, top 15% for YW, CW, and the top 25% for ADG. Get ready for her THSF Lover Boy calf to hit the ground running.



Lot 27

Bred Heifers

CLEAR WATER SIMMENTALS

28

CLRWTR *Daphne* K631

BD. 1/20/22 • ASA#. 4158515 • Purebred Bred Heifer
Tattoo. K631 • Adj. BW. 83 lbs. • Adj. WW. 666 lbs.

W/C DOUBLE DOWN 5014E

sire **WHF/JS/CCS DOUBLE UP G365**

WHF SUMMER 365C

WS PROCLAMATION E202

dam **CLRWTR DAPHNE H631**

SWAIN DAPHNE 631D

| CE | BW | WW | YW | MCE | Milk | MWW | Marb | REA | API |
|------|-----|------|-------|-----|------|------|------|------|-------|
| 12.2 | 0.5 | 89.9 | 128.9 | 6.2 | 21.9 | 66.8 | 0.04 | 0.96 | 134.6 |

Bred 3/31/23 CLRWTR Clear Advantage (ASA#3858588), sexed female semen

A striking purebred homo black, homo polled daughter of Double Up and going back to Swain genetics and Proclamation on the bottom side. Of course, Double Up is backed by the dominating champion campaigned by Chesney Steenhoek, WHF Summer 365C. K631 ranks in the top 10% for DOC and the top 15% for WW, but her overall set of EPDs are all above average and will bring lots of genetic merit to her CLRWTR Clear Advantage calf. The combination of their two set of EPDs will produce a calf ranking in the top of the Simmental breed.



Lot 28

CLEAR WATER SIMMENTALS

29

CLRWTR *Dalis* K217

BD. 1/22/22 • ASA#. 4158490 • Purebred Bred Heifer
Tattoo. K217 • Adj. BW. 91 lbs. • Adj. WW. 627 lbs.

CCR COWBOY CUT 5048Z

sire **WS PROCLAMATION E202**

WS MISS SUGAR C4

HPF/HILL UPRISING C104

dam **CLRWTR DALIS H217D**

HLTS DALIS D217

| CE | BW | WW | YW | MCE | Milk | MWW | Marb | REA | API |
|------|-----|------|-------|-----|------|------|------|------|-------|
| 12.2 | 1.3 | 82.8 | 125.0 | 6.7 | 26.4 | 67.7 | 0.34 | 0.62 | 147.2 |

Bred 5/22/23 WHF/JS/CCS Double Up (ASA#3658592)

If you are looking for a solid bred heifer to add to your herd, don't miss taking a look at K217. This purebred, white uddered female is bred to Double Up which will add sleekness and femininity to her muscle, mass, and length of body. Don't miss that she ranks in the top 3% for docility.



Lot 29

CLEAR WATER SIMMENTALS

30

CLRWTR *Excell* K882

BD. 2/5/22 • ASA#. 4158506 • 3/4 Simmental Bred Heifer
Tattoo. K882 • Adj. BW. 74 lbs. • Adj. WW. 615 lbs.

WLE COPACETIC E02

sire **BRAMLETS ACE H009**

HPF/BRAM INDY C501

W/C EXECUTIVE ORDER 8543B

dam **ELLINGSON MS EXEC F882**

ELLINGSON MS NEXUS D600

| CE | BW | WW | YW | MCE | Milk | MWW | Marb | REA | API |
|------|------|------|-------|-----|------|------|-------|------|-------|
| 13.9 | -0.6 | 77.9 | 118.8 | 7.2 | 22.0 | 60.9 | -0.01 | 0.81 | 116.0 |

Bred 3/19/23 WHF/JS/CCS Double Up (ASA#3658592)

K882 is the female we question if we should be letting go. This female puts a lot of things together that we really think highly of, but our first priority is raising cattle that can go on to do good things for our customers. So here she is! You admire her depth of body, her beautiful profile, and front end. We sampled Bramlets Ace H009 in our herd who goes back to Ms. Independence which was a NWSS champion. On the bottom side, she goes back to a female we purchased from Terry Ellingson in North Dakota. Interesting genetics here bred to Double Up for a profitable future.



Lot 30

Bred Heifers

CLEAR WATER SIMMENTALS

31

CLRWTR *Shades* K5105H

BD. 2/15/22 • ASA#. 4158528 • Purebred Bred Heifer
Tattoo. K5105H • Adj. BW. 72 lbs. • Adj. WW. 568 lbs.

WLE COPACETIC E02

sire **BRAMLETS ACE H009**

HPF/BRAM INDY C501

CCR COWBOY CUT 5048Z

dam **CLRWTR SHADES C5105C**

CLRWTR JOYS SHADES

| CE | BW | WW | YW | MCE | Milk | MWW | Marb | REA | API |
|------|-----|------|-------|-----|------|------|-------|------|-------|
| 14.4 | 0.2 | 73.7 | 105.7 | 7.9 | 18.6 | 55.4 | -0.02 | 0.88 | 128.3 |

Bred 5/18/23 CLRWTR Clear Advantage (ASA#3858588)

We didn't purposefully put the two Bramlet Ace females next to each other in the catalog, but both females should cause you to stop flipping and pay close attention. K5105H is striking from the profile; long bodied, deep sided, good fronted, and big hipped. This is the type of female we strive to raise on a daily basis, and one we are really proud of. On the bottom side of her pedigree, she carries the infamous Joy Shades family that has had such a powerful impact on her herd for many years. K5105H ranks in the top 15% for CE, MCE, and the top 25% for BW in preparation for her CLRWTR Clear Advantage calf. Circle, star, or highlight this female to view in Milan.



Lot 31

LUCKY PENNY CATTLE COMPANY

32

NAHF *Lovely Lady* 202K

BD. 2/27/22 • ASA#. 4089788 • Purebred Bred Heifer
Tattoo. 202K • Adj. BW. 78 lbs.

CDI INNOVATOR 325D

sire **189G**

TYLERTOWN REUNITED

W/C EXECUTIVE ORDER 8543B

dam **KDS CINNAMON GIRL 50H**

RRCC ALESSIA 50F

| CE | BW | WW | YW | MCE | Milk | MWW | Marb | REA | API |
|------|------|------|-------|-----|------|------|------|------|-------|
| 12.5 | -0.8 | 77.7 | 118.2 | 5.6 | 22.6 | 61.4 | 0.25 | 0.80 | 134.6 |

AI'd on 5/13/23 to Mr SR Mic Drop G1534 (ASA#3568352)

202K is a big bodied, spring bred heifer out of one of our up and coming Executive Order donors. She is AI bred to Mic Drop with no bull exposure. Aled 5-13-2023



Lot 32

CLEAR WATER SIMMENTALS

33

CLRWTR *Yanci* K010

BD. 2/11/22 • ASA#. 4158503 • 3/4 Simmental Bred Heifer
Tattoo. K010 • Adj. BW. 91 lbs. • Adj. WW. 574 lbs.

CCR ANCHOR 9071B

sire **LLSF VANTAGE POINT F398**

HPF RITE 2 LUV 398D

W/C EXECUTIVE ORDER 8543B

dam **CLRWTR YANCI G010**

HOOK'S YANCI 10Y

| CE | BW | WW | YW | MCE | Milk | MWW | Marb | REA | API |
|------|-----|------|-------|-----|------|------|------|------|-------|
| 10.7 | 1.3 | 82.8 | 129.8 | 4.0 | 22.2 | 63.6 | 0.33 | 0.80 | 122.8 |

Bred 3/23/23 WHF/JS/CCS Double Up (ASA#3658592)

Each year we search for genetics to add to our herd, and a several years ago we added genetics from Hook Farms purchasing embryos on Hook's Yanci 10Y. We retained G010 in our herd and this is her second natural calf. Her first bull calf out of Proclamation sold in last year's bull sale to Stephen Rodgers. This _ blood, homo polled female K010 is bred to Double Up for a New Year's baby.



Lot 33

Bred Heifers

NEAL BROTHERS

34

NB *Cendy* 31K

BD. 2/28/22 • ASA#. 4145420 • 5/8 Simmental Bred Heifer
Tattoo. 31K • Adj. BW. 73 lbs. • Adj. WW. 617 lbs.

W/C UNITED 956Y

sire VSF UNITED 6067D

MISS7PW267

DILLONS K217 BLACK DREAM

dam NB CECILIA 8U

GO4TH KB TRAVELER BELLE

| CE | BW | WW | YW | MCE | Milk | MWW | Marb | REA | API |
|------|-----|------|-------|-----|------|------|------|------|-------|
| 10.7 | 2.1 | 81.5 | 128.4 | 5.3 | 22.4 | 63.1 | 0.26 | 0.45 | 130.9 |

Bred 5/2/23 to Schooley Standout 27G (ASA#3585120). Due 2/9/24. Confirmed Safe
Here's a Baldy that will catch your eye! Long spined, very nice through her front 1/3, and a little larger outline, with a great disposition (grandson had her in 4-H). BRED TO SCHOOLEY STANDOUT 27G (ASA# 3585120) on 5/2/23, due 2/9/24 confirmed to AI



CLEAR WATER SIMMENTALS

35

CLRWTR *Smart Choice* K224

BD. 3/3/22 • ASA#. 4158491 • 5/8 Simmental Bred Heifer
Tattoo. K224 • Adj. BW. 69 lbs. • Adj. WW. 478 lbs.

RUBY`S CURRENCY 7134E

sire RUBY NFF UP THE ANTE 9171G

RUBY NFF RHYTHM 2124Z

CIRCLE M TEJAS

dam PURDUE MISS D224

PURDUE MISS A274

| CE | BW | WW | YW | MCE | Milk | MWW | Marb | REA | API |
|------|------|------|------|-----|------|------|------|------|-------|
| 16.2 | -2.1 | 52.7 | 79.1 | 8.4 | 22.2 | 48.5 | 0.16 | 0.46 | 126.5 |

Bred 5/28/23 Rocking P Private Stock (ASA#3775641)
I can guarantee that you won't miss K224 in this sale catalog or in the lot at the sale. Not only are her markings hard to miss, but she is a striking bred female. This Up the Ante daughter going back to a Purdue cow on the bottom side ranks in the top 15% for both CE and BW allowing you some piece of mind when she gives birth to her Private Stock calf in March. Mark this one in your catalog and make the trip to Milan.



BESHEARS SIMMENTALS & TRENT KRITSCH

36

KRI BESH *Ms* KEU2

BD. 3/17/22 • ASA#. 4097284 • Purebred Bred Heifer
Tattoo. KEU2 • Adj. BW. 81 lbs.

HOOK`S BEACON 56B

sire CLRS GUARDIAN 317G

CLRS ALWAYS XCELLENT

W/C BF INNOCENT MAN

dam BESH MS WINNIE EU2

TRIPLE C MISS WISCONSIN

| CE | BW | WW | YW | MCE | Milk | MWW | Marb | REA | API |
|------|------|------|-------|-----|------|------|------|------|-------|
| 13.3 | -0.7 | 81.5 | 121.5 | 7.1 | 29.4 | 70.1 | 0.39 | 1.20 | 161.0 |

PE to Besh Bull K87 (ASA#4093509) from 5/13/13-6/5/23. Confirmed Safe.
This one is a keeper, yes that kind and will hopefully be easy to find in the grass pens. This Guardian female is on her way to be an excellent brood cow for many years. We call her U2. U2 exhibits all the positives you want in a Simmental cow being deep, broody, wide based, stout, with all the capacity to be efficient in your pasture. This Guardian female has 9 EPDs in the top 25% and in the top 15% for STAY and the top 10% for API at 160. For the older breeders, remember Grace N10, Aces High and Jasmine.



Service Sire

Bred Heifers

CLEAR WATER SIMMENTALS

37

CLRWTR *Gerrie* K54

BD. 3/22/22 • ASA#. 4158534 • Purebred Bred Heifer
Tattoo. K54 • Adj. BW. 81 lbs. • Adj. WW. 545 lbs.

CCR ANCHOR 9071B

sire **LLSF VANTAGE POINT F398**

HPF RITE 2 LUV 398D

WS ALL-AROUND Z35

dam **OMF GERRIE G54**

OMF/DK CHERRIE

| CE | BW | WW | YW | MCE | Milk | MWW | Marb | REA | API |
|------|------|------|-------|-----|------|------|------|------|-------|
| 14.2 | -0.3 | 79.2 | 122.5 | 6.9 | 23.6 | 63.2 | 0.33 | 0.80 | 142.6 |

AI'd on 3/8/23 to WHF/JS/CCS Double Up G365 (ASA# 3658592)

In 2020 we selected OMF Gerrie G54 from Oak Meadow and K54 is her first calf. K54 is a sleek, stylish, long necked female bred to Double Up. The resulting calf should have a ton of style and eye appeal. K54 ranks in the top 15% for CE, DOC, top 20% for BW and MARB.



Lot 37

BESHEARS SIMMENTALS

38

BESH KB39

BD. 5/6/22 • ASA#. 4093526 • Purebred Bred Heifer
Tattoo. KB39 • Adj. BW. 79 lbs.

GLS/JRB COOL 154C

sire **BESH/HF COOL F316**

HPF/PCCC BUTTERFLY 316D

WHEATLAND MRBOJANGLES97X

dam **BESH MS CZ39**

BESH MS. ENCHANTED Z39W

| CE | BW | WW | YW | MCE | Milk | MWW | Marb | REA | API |
|-----|-----|------|-------|-----|------|------|------|------|-------|
| 5.6 | 4.0 | 76.6 | 117.3 | 1.9 | 22.5 | 60.7 | 0.08 | 0.70 | 110.2 |

PE to Besh Bull K87(ASA#4093509) from 5/8/23- 7/16/23. Confirmed Safe.

I feel this bred female comes to the top with her mass, bone, structure, balance, and overall look. KB39 is thick in her rear and packs some performance and that reflects in both sides of the pedigree. If you need a female to add performance especially in the bulls, here is sure bet.



Lot 38

BESHEARS SIMMENTALS

39

BESH *Ms Toni* KG58

BD. 5/11/22 • ASA#. 4097408 • Purebred Bred Heifer
Tattoo. KG58 • Adj. BW. 81 lbs.

BESH HAMMER TIME EX29

sire **BESH MAX OUT GT8**

BESHEARS MAXI GIRL T8

DOZER

dam **BESH MS TONI GX58**

IC JOY`S TONI X58

| CE | BW | WW | YW | MCE | Milk | MWW | Marb | REA | API |
|-----|-----|------|-------|-----|------|------|-------|------|------|
| 2.4 | 3.9 | 85.6 | 134.9 | 0.2 | 22.2 | 64.9 | -0.01 | 1.04 | 91.6 |

PE to Besh Bull K87 (ASA#4093509) from 5/8/23-6/5/23. Confirmed Safe.

Toni gives everyone the same reaction, at least the ones stopping by for a visit or on the day of pictures. We had a breeder that wanted me to put a price on her, my reply was that we are dedicated to the sale and give everyone the same opportunity no matter the price on sale day. Toni is a total package that we feel offers big time potential. KG58 should have a fancy name but she will make her mark with her future progeny. Just think of all the bulls to mate her to and that will add genetic merit for many years. The owner makes the choices however we will keep up with her and her future. We invite you to stop in sale week or at The Clear Choice on sale day. Do not forget her calf could win you \$3000. Toni is easy to recommend. Could she be a future donor?



Lot 39

Bred Heifer & Fall Cow-Calf Pairs

BESHEARS SIMMENTALS



Lot 40



CMCC *Rachel* K606

BD. 4/26/22 • AHA# 44497092 • Polled Hereford Bred Cow
Tattoo. K606

GO EXCEL L18

sire **H EXCEL 8051 ET**

H LADY GOLD 323

RAMSEY'S LADY'S MAN

dam **LH RACHEL 606D**

LH MOLLY 405B

AI'd to JTH SC Playmaker (AHA# 436220090) on 5/29/23. Confirmed safe.

Yes, you are surprised, the only Hereford in the sale and a nice one. Look at the pedigree and look at the exceptional bull she is bred to, JTH SC Playmaker. Playmaker was a champion and is owned by Jones Show Cattle, Lowderman Cattle, Lemmon Cattle, John Thomas and Foggy Bottom Farm. Playmaker is a son of Ribeye who is one of the top bulls in the breed owned by Ned and Jan Ward, GKB Cattle Co. and Colyer Herefords. Few sires in the history of the breed have done what Ribeye 88X has done. He was used a heifer bull with no calving problems and added rapid growth with a supreme muscle pattern. Ribeye's list of champions is long. Back to K606, she is complete, well balanced and packs some performance and carries a very strong lineage.

NEAL BROTHERS



Lot 41



NB *Crown Jewel* J2

BD. 9/29/21 • ASA# 4241221 • 1/2 Simmental Cow-Calf Pair
Tattoo. J2 • Adj. BW. 67 lbs. • Adj. WW. 605 lbs.

MAR INNOVATION 251

sire **TJ DIPLOMAT 294D**

TJ 33Y

PVF INSIGHT 0129

dam **NB JEWEL 126D**

NB DREAMBOAT ANNE 5U

| CE | BW | WW | YW | MCE | Milk | MWW | Marb | REA | API |
|------|-----|------|-------|-----|------|------|------|------|-------|
| 10.2 | 1.7 | 77.5 | 122.3 | 5.5 | 26.7 | 65.3 | 0.41 | 0.84 | 130.0 |

Bred 1/25/23 to LCDR Progressive 106G (ASA#3646242). Due 11/4/23

Definite cow power here! She's got it all! Nice fronted, high volume, sound, and a Baldy! Good on paper and on the ground. Goes back to our 5U cow on the bottom side. Going to calve to PROGRESSIVE shortly after the sale! I don't know what I was thinking when I decided to sell this one!

CLEAR WATER SIMMENTALS



Lot 42



CLRWTR *Attention Getter*

BD. 9/1/21 • ASA# 4046905 • Purebred Cow-Calf Pair
Tattoo. J5105R • Adj. BW. 74 lbs. • Adj. WW. 612 lbs.

HOOK'S BOZEMAN 8B

sire **MR SR 71 RIGHT NOW E1538**

MISS SR C1538

RUBYS TURNPIKE 771E

dam **CLRWTR ATTENTION GETTER**

CLRWTR LADY LUCK Y5105E

| CE | BW | WW | YW | MCE | Milk | MWW | Marb | REA | API |
|------|------|------|-------|-----|------|------|------|------|-------|
| 15.6 | -1.9 | 82.5 | 130.1 | 9.8 | 30.9 | 72.1 | 0.09 | 1.03 | 147.9 |

Lot 42A: Bull Calf / Tattoo: L5105P / BD: 9/2/23 / Act. BW: 85#

Sire: Rocking P Private Stock (ASA#3775641)

What a great way for us to start our offering of pairs than J5105R and her Private Stock bull calf. J5105R is a homo black, homo polled female that goes back to the great Lady Luck "Lucky" that was campaigned to great success by our nephew Maverick. They were quite the dynamic pair and Lucky was quite the female. Unfortunately, we lost "Lucky" a few years ago as she was part of a legacy that is the Joy Shades cow family. This Right Now female has exceptional EPDs ranking in the top 5% for MCE, top 10% for CE, BW, Milk, and the top 15% for MWW, and YG. The rest of her EPDs are the top 40% or better! J5105R is truly a complete package available here at the Clear Choice Sale.

Fall Cow-Calf Pairs

CLEAR WATER SIMMENTALS

43

CLRWTR *Serena* J74H

BD. 9/2/21 • ASA#. 4046882 • Purebred Cow-Calf Pair
Tattoo. J74H • Adj. BW. 83 lbs. • Adj. WW. 650 lbs.

CCR COWBOY CUT 5048Z

sire **WS PROCLAMATION E202**

WS MISS SUGAR C4

LLSF UPRISING Z925

dam **CLRWTR SERENA G74T**

HF SERENA



Lot 43

| CE | BW | WW | YW | MCE | Milk | MWW | Marb | REA | API |
|------|-----|------|-------|-----|------|------|------|------|-------|
| 10.5 | 2.4 | 98.8 | 147.9 | 5.4 | 26.0 | 75.3 | 0.33 | 0.88 | 144.1 |

Lot 43A: Bull Calf / Tattoo: L74C / BD: 9/3/23 / Act. BW: 85#

Sire: Rocking P Private Stock (ASA#3775641)

We were very fortunate to be apart of the story of HF Serena and her reign of Simmental success both in the show ring, the sale ring, and her progeny's success in both as well. Her influence continues in our herd with daughters that we retained in the herd. J74H has a bull calf at her side by Rocking P Private Stock, and if I know Serena progeny, he is likely to grow up and be ready to make an impact in someone's herd in the future. This is an incredible package of genetics here with Serena on the bottom side and Miss Sugar C4 on the top side not to mention J74H's EPD profile. She ranks in the top 3% for WW, DOC, and the top 5% for YW, and MWW.

CLEAR WATER SIMMENTALS

44

CLRWTR *Elegance* J2E

BD. 9/2/21 • ASA#. 4046902 • Purebred Cow-Calf Pair
Tattoo. J2E • Adj. BW. 90 lbs. • Adj. WW. 687 lbs.

CCR ANCHOR 9071B

sire **LLSF VANTAGE POINT F398**

HPF RITE 2 LUV 398D

LRS TURNING POINT 3117A

dam **TYLERTOWN ELEGANCE**

WELSH'S ELEGANCE 144Y



Lot 44

| CE | BW | WW | YW | MCE | Milk | MWW | Marb | REA | API |
|------|-----|------|-------|-----|------|------|------|------|-------|
| 11.2 | 2.1 | 91.7 | 144.1 | 5.6 | 25.4 | 71.2 | 0.27 | 1.04 | 134.7 |

Lot 44A: Heifer Calf / Tattoo: L2 / BD: 9/3/23 / Act. BW: 75#

Sire: THSF Lover Boy (ASA#2983443)

There are some big names in these pairs as we move onto a female that is out of Tyler-town Elegance and Vantage Point. We purchased embryos from Tyler Kreger on Tyler-town Elegance and had great success offering the genetics in our sales. This pair is led by this striking baldy female that looks picture perfect after calving in September. J2E is a doing fantastic job raising her beautiful heifer calf by Lover Boy. J2E ranks in the top 10% for WW, YW, ADG, DOC, and the top 15% for CW, and TI. Settle in and purchase some of the great pairs.

CLEAR WATER SIMMENTALS

45

CLRWTR *Brenda* J411C

BD. 9/2/21 • ASA#. 4046906 • Purebred Cow-Calf Pair
Tattoo. J411C • Adj. BW. 101 lbs. • Adj. WW. 727 lbs.

LCDR WITNESS 541C

sire **LCDR FAVOR 149F**

WS MISS SUGAR C4

STCC JACKED UP 4070

dam **CLRWTR BRENDA E411C**

CLRWTR BRENDA Z411A



Rocking P Private Stock - Sire of Lot 45A

| CE | BW | WW | YW | MCE | Milk | MWW | Marb | REA | API |
|-----|-----|-------|-------|-----|------|------|------|------|-------|
| 5.4 | 4.7 | 103.2 | 159.8 | 1.3 | 25.4 | 77.0 | 0.20 | 1.11 | 130.2 |

Lot 45A: Bull Calf / Tattoo: L411A / BD: 9/3/23 / Act. BW: 90#

Sire: Rocking P Private Stock (ASA#3775641)

Continuing into this great set of pairs, we offer this who is destined to raise some outstanding calves. Right off the bat, J411C is out of LCDR Favor owned by Lazy C Diamond Ranch who offers up a down right impressive EPD profile, foot quality, and dimension. Then you add the influence of HF Serena and FBFS Warsaw on the bottom side, and did we mention that she is raising a bull calf by Private Stock. J411C ranks in the top 2% for WW, YW, top 3% for MWW, top 4% for ADG, and the top 5% for CW. All the boxes are checked on this cow-calf pair.

Fall Cow-Calf Pairs

CLEAR WATER SIMMENTALS



Lot 46

46

CLRWTR *Queenma* J5105S

BD. 9/3/21 • ASA#. 4046899 • Purebred Cow-Calf Pair
Tattoo. J5105S • Adj. BW. 78 lbs. • Adj. WW. 641 lbs.

HOOK`S BOZEMAN 8B

sire **MR SR 71 RIGHT NOW E1538**

MISS SR C1538

HILB ORACLE C033R

dam **CLRWTR QUENNA G510E**

CLRWTR JOYS QUEENNA

| CE | BW | WW | YW | MCE | Milk | MWW | Marb | REA | API |
|------|------|------|-------|-----|------|------|------|------|-------|
| 13.6 | -0.7 | 82.2 | 125.5 | 7.9 | 28.4 | 69.5 | 0.13 | 0.88 | 140.3 |

Lot 46A: Heifer Calf / Tattoo: L5105N / BD: 9/2/23 / Act. BW: 73#

Sire: Rocking P Private Stock (ASA#3775641)

Next up in the lineup is a Right Now x Queenna pair with a heifer calf at side by Private Stock. The Queenna family goes back to the legendary Ebonys Joy 5105R whose influence traces back to over 100 calves in our breed, the majority for us right here in Milan, Indiana. Queenna J5105S calved in early September, and you look forward to sleeping soundly with her as her CE and BW both rank in the top 15-20%.

CLEAR WATER SIMMENTALS & HTP SIMMENTALS



Lot 47

47

CLRWTR HTP *Looking Good* J457C

BD. 9/10/21 • ASA#. 4046886 • Purebred Cow-Calf Pair
Tattoo. J457C • Adj. BW. 72 lbs. • Adj. WW. 620 lbs.

W/C RELENTLESS 32C

sire **JSUL SOMETHING ABOUT MARY 8421**

JBSF PROUD MARY

HILB ORACLE C033R

dam **CLRWTR HTP LOOKING GOOD**

CLRWTR HTP LOOKING GOOD

| CE | BW | WW | YW | MCE | Milk | MWW | Marb | REA | API |
|-----|-----|------|-------|-----|------|------|------|------|-------|
| 8.3 | 3.4 | 86.5 | 127.8 | 2.9 | 18.8 | 62.0 | 0.03 | 0.84 | 114.8 |

Lot 47A: Heifer Calf / Tattoo: L457B / BD: 9/1/23 / Act. BW: 89#

Sire: WHF/JS/CCS Double Up (ASA#3658592)

J457C traces back to the Miss BF Basic Look 457W who began the exciting road of this lineage. The best way to describe what 457W passes on throughout her influence is COW POWER. We are talking big boned, stout, deep bodied, big hiped, soggy, easy keeping cattle. These females are impressive any time of year. It's not just females - KD Simmentals purchased a bull out of the bull sale that became their leading herd sire. J457C continues the legacy adding elegance and style from the influence of SAM. Her fancy heifer calf born the first day of September is by Double Up. Big time pair with big time potential.

CLEAR WATER SIMMENTALS



Lot 48

48

CLRWTR *Spring Velvet* J126

BD. 9/16/21 • ASA#. 4046900 • Purebred Cow-Calf Pair
Tattoo. J126 • Adj. BW. 63 lbs. • Adj. WW. 547 lbs.

CCR COWBOY CUT 5048Z

sire **SFG COWBOY LOGIC D627**

SFG QUEEN B01

CDI INNOVATOR 325D

dam **CLRWTR SPRING VELVET G126A**

PRS SPRING VELVET X126

| CE | BW | WW | YW | MCE | Milk | MWW | Marb | REA | API |
|------|------|------|-------|-----|------|------|------|------|-------|
| 15.9 | -1.1 | 78.7 | 121.6 | 9.9 | 23.1 | 62.4 | 0.32 | 0.99 | 149.0 |

Lot 48A: Bull Calf / Tattoo: L126 / BD: 8/29/23 / Act. BW 85#

Sire: Rocking P Private Stock (ASA#3775641)

This homo black, homo polled purebred pair has a bull calf at side by Rocking P Private Stock. J126 traces back to PRS Spring Velvet who like the females before her has too has made a name for herself over the years. We purchased embryos by CDI Innovator hoping that the offspring would be good number, eye appealing, sound cattle, and our hopes were true. This Cowboy Logic female ranks in the top 4% for MCE, DOC, top 10% for CE, CW, SHR, and top 15% for BW.

Fall Cow-Calf Pairs



CLEAR WATER SIMMENTALS

49A

CLRWTR *Belle* J5D

BD. 9/29/21 • ASA#. 4046894 • Purebred Cow-Calf Pair
Tattoo. J5D • Adj. BW. 72 lbs. • Adj. WW. 530 lbs.

CLEAR WATER SIMMENTALS

49C

CLRWTR *Belle* J5E

BD. 10/2/21 • ASA#. 4046903 • Purebred Cow-Calf Pair
Tattoo. J5E • Adj. BW. 77 lbs. • Adj. WW. 581 lbs.

LCDR WITNESS 541C

sire

LCDR FAVOR 149F

WS MISS SUGAR C4

MR HOC BROKER

dam

JS SOUTHERN BELLE 5B

JS FLATOUT FLIRTY 46T



Lot 49C

CLEAR WATER SIMMENTALS

50

CLRWTR *Shotgun* J724

BD. 8/18/21 • ASA#. 4046895 • Purebred Cow-Calf Pair
Tattoo. J724 • Adj. BW. 103 lbs. • Adj. WW. 635 lbs.

W/C LOADED UP 1119Y

sire

GEFF COUNTY O

RUBY NFF RHYTHM 475B

STCC JACKED UP 4070

dam

CLRWTR SHOTGUN F724

WF SHOTGUN

| CE | BW | WW | YW | MCE | Milk | MWW | Marb | REA | API |
|-----|-----|------|-------|------|------|------|------|------|------|
| 0.6 | 6.3 | 80.3 | 119.3 | -5.6 | 18.6 | 58.8 | 0.00 | 0.96 | 99.0 |

Lot 50A: Bull Calf / Tattoo: L724A / BD: 9/3/23 / Act. BW: 85#

Sire: THSF Lover Boy (ASA#2983443)

Our final pair offering is a GEFF County O daughter going back to HF Serena on the bottom side. Her pedigree features some outcross genetics that make her a versatile breeding piece. She has a bull calf at side by Lover Boy.



Lot 51

LUCKY PENNY CATTLE COMPANY

51

NAHF *Ms Lucky* 148J

BD. 10/4/21 • ASA#. 4089784 • 5/8 Simmental Cow-Calf Pair
Tattoo. 148J • Adj. BW. 79 lbs.

TJ MAIN EVENT 503B

sire

CDI INNOVATOR 325D

CDI MS SHEAR FORCE 49U

SVF/NJC BUILT RIGHT N48

dam

NAHF LUCKYS PRIDE 721E

476

| CE | BW | WW | YW | MCE | Milk | MWW | Marb | REA | API |
|------|-----|------|-------|-----|------|------|------|------|-------|
| 11.4 | 0.9 | 77.9 | 120.1 | 6.6 | 25.3 | 64.2 | 0.32 | 0.71 | 122.6 |

Lot 51A: Bull Calf / Tattoo: 320L / BD: 8/29/23 / Adj. BW: 73#

Sire: MR SR Mic Drop G1534

This cow is an attractive Innovator daughter with a nice Mic Drop bull calf at side. As a first calf heifer, she has a nice clean udder like her mother that will milk well for years to come. The bull calf onside could make a future calving ease herd sire for someone.

Fall Cow-Calf Pair & Spring Bred Cow

BESHEARS SIMMENTALS



52

BESH *Ms* FD15

BD. 1/18/18 • ASA#. 3765546 • Purebred Bred Cow
Tattoo. FD15 • Adj. BW. 84 lbs.

JASS/JS OPTIMIZER 58X

sire HPF OPTIMIZER A512

HPF RACHELS DREAM X590

LSS THUMPER KG46

dam BESH MS THUMPER D15

STF JOKERS WILD L508

| CE | BW | WW | YW | MCE | Milk | MWW | Marb | REA | API |
|------|-----|------|-------|-----|------|------|-------|------|-------|
| 11.9 | 0.9 | 78.6 | 121.0 | 5.1 | 20.4 | 59.7 | -0.10 | 0.87 | 108.1 |

AI'd to WLE Black Mamba (ASA#3615549) on 1/13/23. Confirmed Safe.

FD15 is a 2018 model that has paid her way repeatedly. Her grand dam STF Jokers Wild has done the same producing the right type of bulls and females. Both have sold well in past Clear Choice sales. This Optimizer baldy cow has a big wide hip, wide top, on a good structure plus all the eye appeal to round out the package. I do not need to say more, she produces and makes money however I suggest retaining her females in your herd.



Lot 53

Haefner

CLEAR WATER SIMMENTALS

53

BWL *Blaze of Jewel* 38F

BD. 1/9/18 • ASA#. 3425254 • Purebred Bred Cow
Tattoo. 38F • Adj. BW. 71 lbs.

MR CCF VISION

sire MR CCF 20-20

HTP SVF DEW THE STROKE

SVF/NJC BUILT RIGHT N48

dam EKHCC RED JEWEL 760

EKHCC CROWN JEWEL 523

| CE | BW | WW | YW | MCE | Milk | MWW | Marb | REA | API |
|-----|-----|------|------|-----|------|------|-------|------|-------|
| 9.7 | 3.7 | 72.3 | 97.2 | 3.4 | 13.9 | 50.0 | -0.05 | 0.98 | 113.6 |

Bred 4/11/23 W/C Bet on Red (ASA# 3808091)

Bred 4/11/23 W/C Bet on Red (ASA# 3808091)

EKHCC Red Jewel 760 is a household name and one of the most impressive donors to have witnessed in person. This beautiful Mr. CCF 20-20 daughter of Red Jewel carries on the mass, body, and structure of her dam while being elegant fronted and sleek designed like 20-20. This female was a past member of our show string and has a lot of good years ahead in production; longevity is built into her pedigree. She sells bred to Bet on Red, and I'm betting this calf will make you money in the future.

Spring Bred Cows

BESHEARS SIMMENTALS

54

BESH *Ms Love Spell* JH95

BD. 8/2/21 • ASA#. 4248714 • Purebred Cow-Calf Pair
Tattoo. JH95 • Adj. BW. 84 lbs.

BESH HAMMER TIME EX29

sire **BESH MAX OUT GT8**

BESHEARS MAXI GIRL T8

MR CCF 20-20

dam **BESH MS LOVE SPELL H95**

HILB LOVE SPELL A27K



Lot 54

| CE | BW | WW | YW | MCE | Milk | MWW | Marb | REA | API |
|-----|-----|------|-------|-----|------|------|------|------|-------|
| 7.1 | 3.3 | 75.8 | 107.0 | 2.3 | 16.5 | 54.4 | 0.04 | 0.84 | 106.0 |

PE Besh Bull 739W (ASA#2762561) from 5/21/23-7/16/23. Confirmed Safe.

Love Spell has the sound and reliable pedigree of Hammer Time, 20-20, Broker and Baby's Breath. This female is moderate framed packing some stoutness and bone. The genetics are built in and defiantly passed on for many generations. Chris Emberton purchased a bull family member at the bull sale.

BESHEARS SIMMENTALS

55

BESH *Ms F510*

BD. 2/9/18 • ASA#. 3765545 • Purebred Bred Cow
Tattoo. F510 • Adj. BW. 83 lbs.

AJE/PB MONTECITO 63W

sire **OBCC COVER CHARGE M03Z**

OBCC COVER GIRL M03U

CNS PAYS TO DREAM T759

dam **BESH MS WINONA C510**

TRIPLE C MISS WISCONSIN



Lot 55

| CE | BW | WW | YW | MCE | Milk | MWW | Marb | REA | API |
|------|-----|------|-------|-----|------|------|------|------|-------|
| 10.3 | 1.7 | 69.7 | 106.1 | 5.7 | 22.6 | 57.4 | 0.10 | 1.05 | 124.1 |

PE Besh Bull 739W (ASA#2762561) from 5/21/23-7/16/23. Confirmed Safe.

F510 is one of the two proven cows from Triple C Ms Wisconsin. Look up the other one; actually, you can't go wrong purchasing them both. F510 is always the same, being in the same condition all year long. The returns will be more than the cost. She is in her prime. F510 will keep in the business producing fancy heifer calves and bulls that will fit the needs of your bull customers.

BESHEARS SIMMENTALS

56

BESH *Ms Wanda* E15

BD. 4/2/17 • ASA#. 3292419 • Purebred Bred Cow
Tattoo. E15 • Adj. BW. 82 lbs.

W/C NO REMORSE 763Y

sire **W/C BF INNOCENT MAN**

MISS WERNING 174Y

TRIPLE C MAJIC MAN M211

dam **TRIPLE C MISS WISCONSIN**

GRACE N10



Lot 56

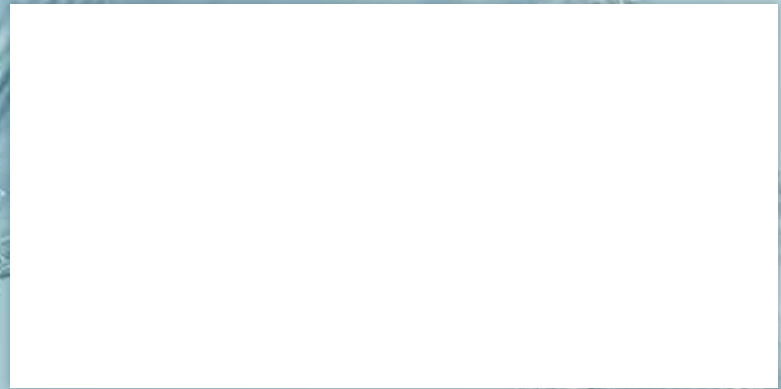
| CE | BW | WW | YW | MCE | Milk | MWW | Marb | REA | API |
|-----|-----|------|------|-----|------|------|-------|------|-------|
| 9.8 | 1.4 | 61.8 | 89.7 | 4.6 | 30.8 | 61.6 | -0.04 | 1.08 | 116.8 |

PE Besh Bull 739W (ASA# 2762561) 5/21/23-7/16/23. Confirmed Safe.

It is hard to fault this Innocent Man cow. I realize someone will find a small thing but being in our herd and knowing what she has produced over the years, makes her an easy selection. E15 just weaned a calf off before pictures, so you can see what kind of udder she has. Her disposition is excellent as well. E15's dam, Triple C Ms Wisconsin has been staple in our operation for years.



DP Sales Management, LLC
153 Bourbon Hills
Paris, KY 40361
www.dpsalesllc.com



6TH ANNUAL
THE CLEAR
CHOICE
female sale

SATURDAY, OCTOBER 28, 2023
1:00 PM EST • MILAN, IN

*Selling 60+ Simmental & SimAngus Females
Show Heifer Prospects, Proven Donors & Bred Females*