

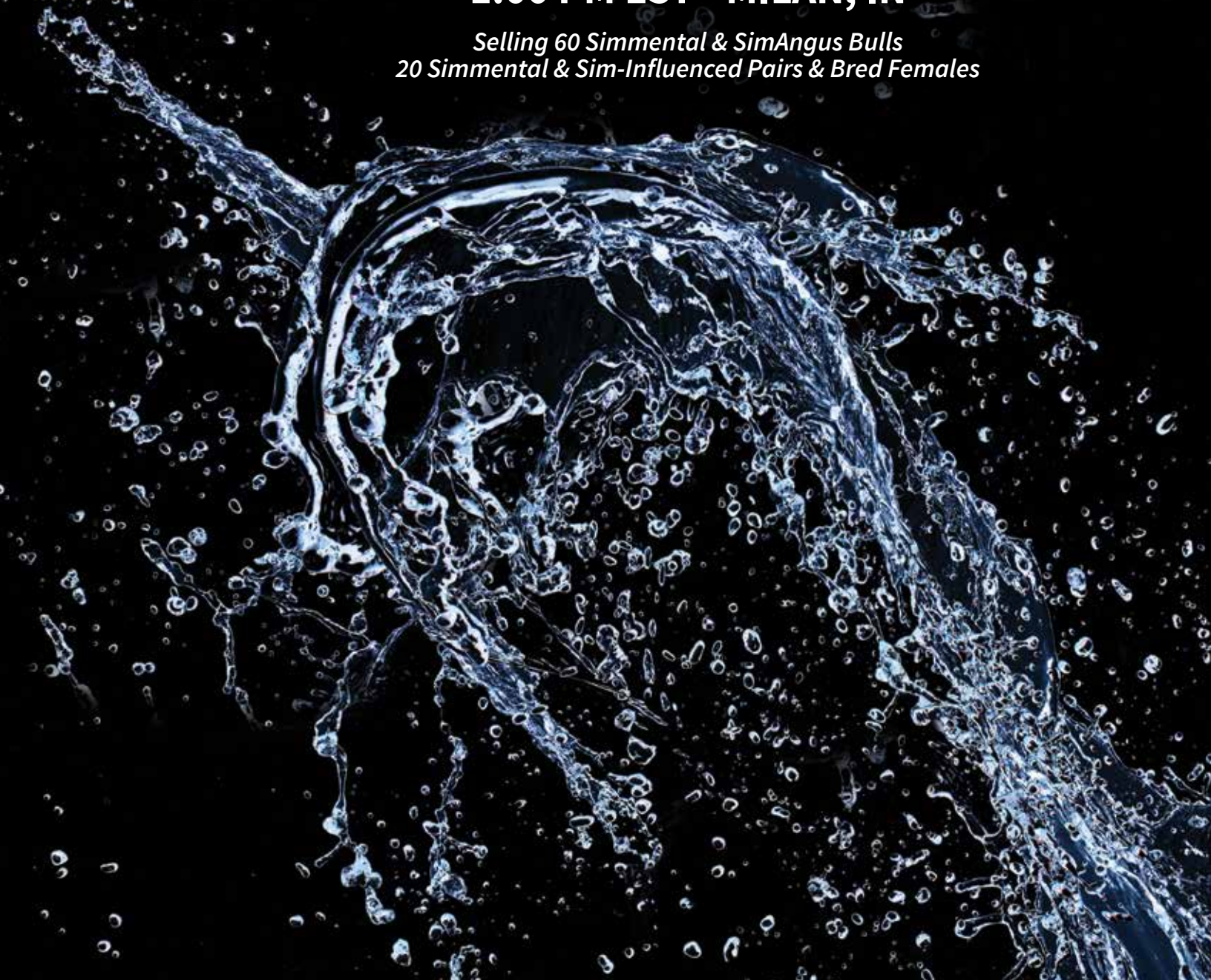


# THE CLEAR CHOICE *bull sale*

**SATURDAY, MARCH 28, 2020**

**1:00 PM EST • MILAN, IN**

*Selling 60 Simmental & SimAngus Bulls  
20 Simmental & Sim-Influenced Pairs & Bred Females*



## QUICK REFERENCE TO ASA EPDS AND \$ INDEXES

Expected Progeny Differences (EPDs): EPDs are the most accurate and effective tool available for comparing genetic levels. In using EPDs, the difference between two sires' EPDs represents the unit difference expected in the performance of their progeny. For example, if sires A and B have EPDs of +10 and -5, a 15-unit difference would be expected in their progeny (moving from -5 to +10 yields 15 units). Key to using EPDs is knowing what units they are expressed in. For example, if the above case referred to weaning weight EPDs, A would be expected to sire 15-pounds more weaning weight than B. If calving ease were the trait, A would be expected to sire 15-percent more unassisted births in first-calf heifers; in other words, if B sired 30 assists in a group of 100 heifers, we'd expect A to require 15 assists. A percentile-ranking chart is required to determine where a bull's EPDs rank him relative to other bulls in the breed. For percentile rankings or more detailed information about EPDs and \$ indexes visit [www.simmental.org](http://www.simmental.org). Listed below are the units ASA EPDs are expressed in:

**Calving Ease (CE):** Percent of unassisted births when used on heifers.

**Birth Weight (BW):** Pounds of birth weight

**Weaning Weight (WW):** Pounds of weaning weight.

**Yearling Weight (YW):** Pounds of yearling weight.

**Maternal Calving Ease (MCE):** Percent of unassisted births in first-calving daughters.

**Milk (Milk):** Pounds of weaning weight due to milk.

**Maternal Weaning Weight (MWW):** Pounds of weaning weight due to milk and growth.

**Marbling (Marb):** Marbling score.

**Ribeye Area (REA):** Square inches of ribeye.

**All-Purpose Index (API):** Dollars per cow exposed under an all-purpose-sire scenario. (See below for more details.)

**Additional EPDs not shown in catalog:**

**Stayability (STAY):** Percent of daughters remaining in the cowherd at 6 years of age

**Back Fat (BF):** Inches of backfat.

**Carcass Weight (CW):** Pounds of carcass weight.

**Yield Grade (YG):** Yield grade score.

**Warner-Bratzler Shear Force (WBSF):** Pounds of force required to shear a steak.

**Terminal Index (TI):** Dollars per cow exposed under a terminal-sire scenario. (See below for more details.)

**\$ Indexes:** Though EPDs allow for the comparison of genetic levels for many economically important traits, they only provide a piece of the economic puzzle. That's where \$ indexes come in. Through well-conceived, rigorous mathematical computation, \$ indexes blend EPDs and economics to estimate an animal's overall impact on your bottom line. The same technology that led to the dramatic progress in swine, poultry and dairy genetics over the last several decades was used to develop the following \$ indexes: All-Purpose Index (API): Evaluates sires for use on the entire cow herd (bred to both Angus first-calf heifers and mature cows) with the portion of their daughters required to maintain herd size retained and the remaining heifers and steers put on feed and sold grade and yield.

**Terminal Index (TI):** Evaluates sire for use on mature Angus cows with all offspring put on feed and sold grade and yield.

**Using API and TI:** First, determine which index to use; if you're keeping replacements use API, if not, TI. Then, just as with EPDs, zero in on the unit difference between bulls. (As described above, index units are in dollars per cow exposed.) The difference can be used to determine how much a bull is worth compared to another. Or, put another way, how much you can pay for one bull compared to another. For example, when buying an all-purpose-type sire, you can quickly figure a bull scoring +100 for API is worth an extra \$6,000 over a +50 bull if both are exposed to 30 cows over 4 years ( $\$50 \text{ diff.} \times 30 \text{ hd.} \times 4 \text{ yr.} = \$6,000$ ). A percentile-ranking chart is required to determine where a bull's index value ranks him relative to other bulls in the breed. For percentile rankings or more detailed information about EPDs and \$ indexes visit [www.simmental.org](http://www.simmental.org).

### PUREBRED SIMMENTAL SPRING EPD AVERAGES

CE	BW	WW	YW	MCE	Milk	MWW	Marb	REA	API
10.0	1.8	67.8	100.6	5.2	21.6	55.6	0.01	0.82	123.8

### SIM-SOLUTION SPRING EPD AVERAGES

CE	BW	WW	YW	MCE	Milk	MWW	Marb	REA	API
11.7	0.6	64.5	98.5	6.3	21.7	54.4	0.28	0.62	123.8

## SALE SCHEDULE

Friday, March 27, 2020

All Day . . . . . Bulls on display for viewing

Saturday, March 28, 2020

8:00 AM . . . . . Bulls on display for viewing

10:00 AM . . . . . Brunch, *Presentations on Bovine Health and Immunology sponsored by Multimin 90*

11:30 AM . . . . . Lunch

1:00 PM . . . . . The Clear Choice Bull Sale

## SALE LOCATION

ClearWater Simmentals Sale Facility

5512E St Rd 350

Milan, IN 47031

*Hard surface parking and handicap accessible.*

## SALE DAY PHONES

Doug Parke . . . . . 859.421.6100

Drew Hatmaker . . . . . 423.506.8844

Leah Meinders . . . . . 812.498.2840

## AUCTIONEER

Tommy Carper . . . . . 540.336.2737

## SALE STAFF

Jacob Schwab . . . . . 812.212.2095

Mike Berger . . . . . 574.850.5605

Tim Schwab, *Consultant* . . . . . 812.569.8536

Dalton Lundy, *Consultant* . . . . . 502.727.6898

## INTERNET BROADCASTING



## TRUCKING

Brian Wyatt . . . . . 423-240-5533

The Clear Choice Bull Sale will work with you to determine the most economical trucking.

## SALE REGISTRATION & PAYMENT

All buyer numbers will only be issued with a valid ID and payment is due day of sale. DP Sales Management would appreciate timely settlement of receivables within 15 days of date of sale. Cattle will not be transferred until paid in full. DP Sales accepts Visa and Mastercard.

## SALE TERMS & CONDITIONS

All animals will be sold in accordance with the suggested guidelines of the American Simmental Association. For updated EPD's, genetic status, plus the current ASA guidelines and conditions go to [www.simmental.org](http://www.simmental.org). Announcements made sale day and from the auction block take precedence over printed material associated with this sale. Anyone attending this sale attends at his or her own risk. ClearWater Simmentals, DP Sales Management, LLC, or guest consignors will not be responsible for any personal injury while attending this sale.

Catalog designed by







# THE CLEAR CHOICE *bull sale*

SATURDAY, MARCH 28, 2020 • 1:00 PM EST • MILAN, IN



## Welcome!

### **ClearWater Simmentals**

Jeff & Leah Meinders  
Milan, Indiana  
Leah Meinders, 812.498.2840  
[www.clearwatersimmentals.com](http://www.clearwatersimmentals.com)

### *Consignors*

#### **B&K Farms**

Ben Brown / Petersburg, TN  
931-607-9171

#### **Beshears Simmentals**

Bobby Beshears / Winchester, IN  
765-717-4789

#### **HTP Simmentals**

Drew & Holli Hatmaker / Paris, KY  
Drew 423-506-8844 / Holli 859-707-5248

#### **Ivie and Sons**

Chris Ivie / Petersburg, TN  
931-215-0316

#### **Lucky Penny Cattle Company**

Nate Hoeing / Rushville, IN  
765-561-3178

#### **Neal Brothers**

Joe Neal / Bicknell, IN  
812-735-4472



### **Doug & Debbie Parke / Drew & Holli Hatmaker**

Doug, 859-421-6100 / Drew, 423-506-8844  
Holli, 859-707-5248 / Office, 859-987-5758  
153 Bourbon Hills Paris, KY 40361  
[office@dpsalesllc.com](mailto:office@dpsalesllc.com) / [www.dpsalesllc.com](http://www.dpsalesllc.com)

It has been an exciting couple of years as we embarked upon this new adventure. We appreciate the support of breeders throughout the country and their interest in our program. It is hard to believe that this is the third bull sale here in our facility.

We are really excited about this set of bulls, and believe that this is some of the best bulls that have ever been through our program. Not only do we believe that these bulls are backed by the top donors in our program, but we have also tried to assemble outstanding genetics from Simmental operations. All of our sale offering has been BVD-PI tested and all health work is in order.

We hope that you will join us on Saturday, March 28th at the sale. Please let us know if you have any questions regarding the offering. We look forward to seeing you at the sale.

*Jeff & Leah Meinders*  
ClearWater Simmentals

On behalf of DP Sales Management and ClearWater Simmentals, we would like to welcome you to the 2020 edition of the Clear Choice Bull Sale. Jeff and Leah continue to assemble great Simmental genetics; matching that with exceptional customer service.

2019 was a challenging year in Agriculture. As we welcomed the New Year, beef producers are looking forward to a promising year. The spring expos have shown that the interest in Simmental genetics has been high and sought after. It is a great time to add a new herd sire to your operation, and the Clear Choice group has assembled bulls that add a ton of genetic merit to your herd. Jeff, Leah, or the other consignors would be happy to discuss the bull offering with you.

Join us on sale morning for brunch and to view the bull offering. If you can not be with us, the sale will be broadcasted on DVAuction. Please let us know if we can be of any assistance to you as you select your next herd sire. See you in Milan!

*Doug Parke*

DP Sales Management

# Tonto



B&K FARM & 3B CATTLE CO.



## MAPLECREST TONTO 821F

BD. 4/1/18 | ASA#. 3461739 | 3/4 Simmental  
Tattoo. 821F | Adj. BW. 82 lbs. | Adj. WW. 788 lbs.

TRIPLE C SINGLETARY S3H

sire

**CCR COWBOY CUT 5048Z**

CCR MS 4045 TIME 7322T

STF DOMINANCE T171

dam

**MAPLECREST RITA 151Y**

MAPLECREST RITA M546

CE	BW	WW	YW	MCE	Milk	MWW	Marb	REA	API
10.3	2.5	77.2	109.9	6.3	10.9	49.5	0.35	0.80	131.3

Here is a coming two year old that is quite impressive. Tonto was bred in the Maplecrest program and went to the 2018 North American where he was selected calf champion. In visiting with Adam Hall and John Grimes they both stated Tonto comes from one of the best cow families at Maplecrest. We purchased this complete Cowboy Cut son out of the Eastern Spring Simmental Sale at the Ohio Beef Expo. After arriving in Tennessee he went to work in our breeding program. We anxiously wait for his progeny to hit the ground. On paper Tonto is in the top 10% for weaning, top 25% for yearling and top 35% for API. Tonto is homo polled and heterozygous black. We know this Cowboy Cut son will do a good job in our program and feel he can benefit your program as well. He is impressive no doubt.

## NEAL BROTHERS

2

**NB CECIL 23F**

BD. 2/21/18 | ASA#. 3513569 | Purebred  
Tattoo. 23F | Adj. BW. 84 lbs. | Adj. WW. 615 lbs.

YARDLEY UTAH Y361

sire

**W/C RELENTLESS 32C**

MISS WERNING KP 8543U

DILLONS K217 BLACK DREAM

dam

**NB CECILIA 8U**

GO4TH KB TRAVELER BELLE

CE	BW	WW	YW	MCE	Milk	MWW	Marb	REA	API
9.1	2.9	65.7	89.9	2.9	19.3	52.1	0.20	0.70	124.9

This bull is sired by the popular W/C Relentless and out of our 8U donor. He has a very nice look and is very complete. These older bulls are rugged and have been managed to be ready to go to work. Semen tested, BVD tested, Homo Polled & Homo Black results prior to sale.

## NEAL BROTHERS

3

**NB MR UNITED 59F**

BD. 3/18/18 | ASA#. 3566662 | 5/8 Simmental  
Tattoo. 59F | Adj. BW. 76 lbs. | Adj. WW. 603 lbs.

TNT TUITION U238

sire

**W/C UNITED 956Y**

MISS WERNING 956W

DILLONS K217 BLACK DREAM

dam

**NB CECILIA 8U**

GO4TH KB TRAVELER BELLE

CE	BW	WW	YW	MCE	Milk	MWW	Marb	REA	API
10.2	1.2	73.8	117.0	5.2	24.6	61.5	0.22	0.68	123.1

This older bull is sound with plenty of muscle and guts, along with a balanced set of EPD's. He is ready to breed cows. Another bull out of the 8U donor. Semen tested, BVD tested, Homo Polled & Homo Black results prior to sale.

## NEAL BROTHERS

4

**NB PROOF POSITIVE 15F**

BD. 5/25/18 | ASA#. 3513550 | Purebred  
Tattoo. 15F | Adj. BW. 77 lbs. | Adj. WW. 579 lbs.

CCR COWBOY CUT 5048Z

sire

**SVF BUCKLE-UP B58**

DS-SS DAZZLE 264W

TRIPLECPOSITIVEPOWER785

dam

**NB POSITIVELY CRYSTAL**

NB CRYSTAL CLEAR 15M

CE	BW	WW	YW	MCE	Milk	MWW	Marb	REA	API
8.7	1.8	63.9	91.5	3.5	22.5	54.4	0.01	0.70	114.5

This older bull is ready to go to work. Very complete and sired by SVF Buckle-Up, who we own with Sunset View. We have been very happy with our Buckle-Up calves. Semen tested, BVD tested, Homo Polled & Homo Black results prior to sale.



SVF BUCKLE-UP B58 / SIRE OF LOTS 4 &amp; 5

## NEAL BROTHERS

5

**NB CLOVER UP F63**

BD. 6/18/18 | ASA#. 3513554 | 3/4 Simmental  
Tattoo. F63 | Adj. BW. 78 lbs. | Adj. WW. 632 lbs.

CCR COWBOY CUT 5048Z

sire

**SVF BUCKLE-UP B58**

DS-SS DAZZLE 264W

SS UPSCALE X25

dam

**CVLS AUTUMN 352A**

CVLS GOTTA HAVE HER 927W

CE	BW	WW	YW	MCE	Milk	MWW	Marb	REA	API
10.1	2.0	68.1	95.0	3.8	22.7	56.7	0.13	0.73	117.5

This power-house bull is sired by Buckle-Up and out of a Clover Valley dam. We have been very happy with our Buckle-Up calves. This bull has a little more power and is very nice phenotypically. Semen tested, BVD tested, Homo Polled & Homo Black results prior to sale.

## NEAL BROTHERS

6

**NB IN THE CLEAR 45F**

BD. 8/8/18 | ASA#. 3601017 | 3/8 Simmental  
Tattoo. 45F | Adj. BW. 79 lbs. | Adj. WW. 541 lbs.

NB CLEAR OUTLOOK 2A

sire

**NB MR CLEAROUT 31D**

SR MS XU94

HOOVER DAM

dam

**SVFM HOOVERS LEGACY**

82S

CE	BW	WW	YW	MCE	Milk	MWW	Marb	REA	API
10.2	1.0	64.5	97.9	4.7	22.6	54.9	0.30	0.64	126.3

This low percentage bull is definitely a commercial man's bull. Ultra-sounded with plenty of body & muscle. Ready to go to work. Semen tested, BVD tested, Homo Polled & Homo Black results prior to sale.





BESHEARS SIMMENTALS

7

## AK/NDS RELENTLESS 817

BD. 8/13/18 | ASA#. 3445873 | 3/4 Simmental  
Tattoo. 817F | Adj. BW. 62 lbs. | Adj. WW. lbs.

YARDLEY UTAH Y361

sire

W/C RELENTLESS 32C

MISS WERNING KP 8543U

MR NLC UPGRADE U8676

dam

E/T ALEXUS 368A

TEHAMA BLACKCAP N577

CE	BW	WW	YW	MCE	Milk	MWW	Marb	REA	API
10.4	2.2	69.3	97.3	4.1	18.7	53.3	0.22	0.76	116.4

When we bought the Alexis cow 2 falls ago, we knew we had bought a great cow but had no idea the bull calf on her side would be this good. 817F is a fall calf that can handle a little bigger herd than some of these spring born bulls. He is stout, big footed, big barreled and reads well on paper. He should work well on heifers while still adding pounds to your bottom line. Semen test and BVD test results prior to sale.

LUCKY PENNY CATTLE COMPANY

8

## NAHF LUCKY'S DESIGN 838F

BD. 8/28/18 | ASA#. 3679733 | 1/2 Simmental  
Tattoo. 838F | Adj. BW. 81 lbs. | Adj. WW. lbs.

TRIPLE C SINGLETARY S3H

sire

CCR COWBOY CUT 5048Z

CCR MS 4045 TIME 7322T

dam

FREEBURG RIDGE SERENA 6509

CE	BW	WW	YW	MCE	Milk	MWW	Marb	REA	API
12.7	0.6	64.9	89.6	7.8	22.6	55.1	0.48	0.62	131.9

This Cowboy Cut son is full of red meat, ready to breed cows or heifers. He will add muscle shape, pounds, and performance to your calf crop!



# Responsive Cattle™



**MULTIMIN® 90** supports an existing well designed oral feed program to help optimize immunity and reproduction in beef production.

**Thomas Carper**

540.336.2737

tcarper@multiminusa.com

Sure Trace Mineral Supply by Timed Injection

**WWW.MULTIMINUSA.COM**

1.866.269.6467 | 1.970.372.2302



R REQUIRED

Copyright © 2016, MULTIMIN USA, Inc. All Rights Reserved. A201708-01



*Hartmaker*



**CLRWTR JOYS QUEENA / DAM OF LOT 9**

We are quite proud of this one and thought enough of him to use him to clean up our fall heifers with. If you like to make cattle that are stout heavy muscled and attractive then you will love this one. His mother is probably the stoutest of our 5105 daughters she is just a beast of a cow. Homozygous Black and Homozygous Polled.

CLEARWATER SIMMENTALS



## CLRWTR RELENTLESS F5105Y

BD. 9/2/18 | ASA#. 3565033 | 3/4 Simmental  
Tattoo. F5105Y | Adj. BW. 80 lbs. | Adj. WW. 630 lbs.

YARDLEY UTAH Y361

*sire*

**W/C RELENTLESS 32C**

MISS WERNING KP 8543U

B C LOOKOUT 7024

*dam*

**CLRWTR JOYS QUEENA**

JF EBONYS JOY 5105R

CE	BW	WW	YW	MCE	Milk	MWW	Marb	REA	API
11.6	1.3	65.1	89.0	5.0	19.5	52.0	0.14	0.77	118.7





*Hatmaker*

CLEARWATER SIMMENTALS

10

## CLRWTR JEWELS INNOVATOR

BD. 1/5/19 | ASA#. 3620905 | Purebred  
Tattoo. G760B | Adj. BW. 98 lbs. | Adj. WW. 771 lbs.

TJ MAIN EVENT 503B

*sire*

CDI INNOVATOR 325D

CDI MS SHEAR FORCE 49U

SVF/NJC BUILT RIGHT N48

*dam*

EKHCC RED JEWEL 760

EKHCC CROWN JEWEL 523

CE	BW	WW	YW	MCE	Milk	MWW	Marb	REA	API
10.9	1.9	80.6	117.1	5.6	23.1	63.4	0.24	0.91	140.7

*This stud is sure to draw some attention sale day! His genuine stoutness, three-dimensional build and flawless structural design is what sets him apart among a powerful set of herd sire prospects. He is clean jointed, smooth shouldered, bold centered that is wide topped, big hiped and square pinned. His maternal lineage adds value to his rugged build having the very productive and predictable Red Jewel as his dam. His genetic values certainly set him apart so be sure and find this one you won't be disappointed. Homo Polled.*



LOT 11

LUCKY PENNY CATTLE COMPANY

77

## NAHF MAKE THE GRADE 844F

BD. 9/5/18 | ASA#. 3679734 | 1/2 Simmental  
Tattoo. 844F | Adj. BW. 86 lbs. | Adj. WW. lbs.

ELLINGSON LEGACY M229

*sire*

MR NLC UPGRADE U8676

MS NLC MOJO S6119 B

O C C MISSING LINK 830M

*dam*

008

8

CE	BW	WW	YW	MCE	Milk	MWW	Marb	REA	API
11.1	1.6	70.8	104.8	3.1	18.7	54.0	0.16	0.79	113.0

*This bull is out of our best bull producing Missing Link cow. He will add look and performance to your calves. He should make very nice replacement females. He is ready to go to pasture and breed cows!*



NEAL BROTHERS

12

**NB MR MAGIC 92F**

BD. 9/15/18 | ASA#. 3681534 | 5/8 Simmental  
Tattoo. 92F | Adj. BW. 84 lbs. | Adj. WW. 657 lbs.

SVF/NJC MO BETTER M217

sire

**SC MO MAGIC S47**

AKERS RUBY 2184

DILLONS K217 BLACK DREAM

dam

**NB CECILIA 8U**

GO4TH KB TRAVELER BELLE

CE	BW	WW	YW	MCE	Milk	MWW	Marb	REA	API
8.1	1.5	57.9	93.6	4.1	28.7	57.6	0.10	0.55	115.3

This one is as soggy and stout as they come. Out of our 8U donor and Mo Magic. He is a maternal brother to 186G. High milk epd. A fall bull that's ready to go. Semen tested, BVD tested, Homo Polled & Homo Black results prior to sale.

NEAL BROTHERS

13

**NB MR UNITED 64F**

BD. 11/14/18 | ASA#. 3601019 | 5/8 Simmental  
Tattoo. 64F | Adj. BW. 82 lbs. | Adj. WW. 572 lbs.

W/C UNITED 956Y

sire

**VSF UNITED 6067D**

MISS7PW267

CLO BULL 18SY

dam

**CVLS WISHFUL THINKN 363A**

CVLS RAVENS DREAM 073X

CE	BW	WW	YW	MCE	Milk	MWW	Marb	REA	API
11.9	1.2	75.6	118.4	6.3	20.0	57.7	0.24	0.64	124.6

Another baldy out of the 6067D bull. Moderate framed, long bodied, meat wagon, with a super disposition. Dam came from clover valley. Excellent EPD's. Semen tested, BVD tested, Homo Polled & Homo Black results prior to sale.



Hatmaker

CLEARWATER SIMMENTALS

14

**CLRWTR RELENTLESS F302A**

BD. 9/27/18 | ASA#. 3565026 | Purebred  
Tattoo. F302A | Adj. BW. 94 lbs. | Adj. WW. 582 lbs.

YARDLEY UTAH Y361

sire

**W/C RELENTLESS 32C**

MISS WERNING KP 8543U

SVF STAR POWER S802

dam

**CLRWTR DELILAH X302**

ELLINGSON MS JOKER N302

CE	BW	WW	YW	MCE	Milk	MWW	Marb	REA	API
6.7	4.5	66.8	95.1	2.3	21.2	54.6	0.00	0.86	109.8

F302A is sired by the popular Relentless bull and out of one of the oldest cow families on the farm, productivity bred in. He is right in all the important places with a foot, sound structure, attractive front end, natural dimension and an overall hard to fault balanced look.



CLEARWATER SIMMENTALS

15

## CLRWTR REVOLVER F52

BD. 12/1/18 | ASA#. 3565030 | Purebred  
Tattoo. F52 | Adj. BW. 87 lbs. | Adj. WW. 526 lbs.

WLE TWANG Z547

sire

JS REVOLVER 20C

JS FLATOUT FLIRTY 46T

GWS EBONYS TRADEMARK 6N

dam

MISS CCF ELSA X52

GCF MISS ELSA

CE	BW	WW	YW	MCE	Milk	MWW	Marb	REA	API
9.6	2.1	58.0	80.9	3.6	20.9	49.8	0.06	0.76	112.5

Hatmaker

*This bull will be a sale favorite. He is so powerful from the ground up, standing on a huge foot with great leg structure. When viewed from behind he is heavy muscled, huge hipped and big topped. Yet with all of that power he still maintains a long smooth attractive front one third.*



THE CLEAR  
CHOICE  
customer sale

SATURDAY, APRIL 25, 2020 • MILAN, IN

NEAL BROTHERS

16

## NB BOXCAR 60F

BD. 12/12/18 | ASA#. 3601010 | 5/8 Simmental  
Tattoo. 60F | Adj. BW. 78 lbs. | Adj. WW. 633 lbs.

YARDLEY BOXCAR Y417

sire

W/C BOXCAR 185B

MISS WERNING 185Y

ELLINGSON LEGACY M229

dam

MISS WEF ANNIE A035

RHODES ELBINA 035

CE	BW	WW	YW	MCE	Milk	MWW	Marb	REA	API
11.7	1.1	63.9	106.5	5.8	24.4	56.3	0.34	0.87	129.8

*This bull is built just like his name, he is a chunk. His dam is a very productive Ellingson Legacy M229 daughter we purchased from Waters Edge Farm. Doug picked out his sire for us at Werning's 2015 bull sale. Semen tested, BVD tested, Homo Polled & Homo Black results prior to sale.*





LOT 17



LOT 18



LOT 19

#### CLEARWATER SIMMENTALS

17

### CLRWTR COWBOY LODGIC

BD. 1/5/19 | ASA#. 3667724 | Purebred  
Tattoo. G627 | Adj. BW. 91 lbs. | Adj. WW. 689 lbs.

CCR COWBOY CUT 5048Z

sire

SFG COWBOY LOGIC D627

SFG QUEEN B01

dam

CDI AUTHORITY 77X  
LEFS MS AUTHORITY 627D

WINC MISS TY 714Z

CE	BW	WW	YW	MCE	Milk	MWW	Marb	REA	API
13.3	1.6	83.0	123.7	6.5	24.5	65.9	0.08	1.03	137.9

Here is one that makes you look twice, no his color isn't ideal but once you look past that, He is a really good one that is as deep, thick and sound as you could want one. He has a long extended front end to give you a killer cool look. Sired by Cowboy Logic is icing on the cake, we really like what we are seeing with the Logic calves. They calve easy, grow and have a very eye appealing functional look with an Impressive EPD profile.

#### LUCKY PENNY CATTLE COMPANY

18

### HPW KING LOUIS 09F

BD. 12/19/18 | ASA#. 3543978 | Purebred  
Tattoo. 09F | Adj. BW. 85 lbs. | Adj. WW. lbs.

SS EBONYS GRANDMASTER

sire

TNGL GRAND FORTUNE Z467

AJE/HS/MBCC HOPE FLOATS

dam

MR HOC BROKER  
HPW SPICED HOLLY 08C

GXX MS MOONDREAM 03Z

CE	BW	WW	YW	MCE	Milk	MWW	Marb	REA	API
9.7	1.9	69.0	99.5	6.5	19.6	54.0	0.02	0.66	118.5

King Louis is a calving ease bull that will add extra muscle and look to your calf crop!

#### CLEARWATER SIMMENTALS

19

### CLRWTR REVOLVER G5105A

BD. 1/1/19 | ASA#. 3667756 | Purebred  
Tattoo. G5105A | Adj. BW. 98 lbs. | Adj. WW. lbs.

WLE TWANG Z547

sire

JS REVOLVER 20C

JS FLATOUT FLIRTY 46T

dam

HTP SVF IN DEW TIME  
CLRWTR JOYS PROMISE

JF EBONYS JOY 5105R

CE	BW	WW	YW	MCE	Milk	MWW	Marb	REA	API
7.5	3.7	68.3	97.3	3.4	22.7	56.7	0.01	0.88	118.6

Great disposition on this guy, and he stems from one of our Joy 5105 daughters we have sold numerous progeny out of over the years. Real cow maker here. Keep every daughter out of this one. Homo Polled





Hatmaker

CLEARWATER SIMMENTALS

20

## CLRWTR SMACKDOWN G38

BD. 1/6/19 | ASA#. 3582613 | Purebred  
Tattoo. G38 | Adj. BW. 87 lbs. | Adj. WW. 656 lbs.

LLSF UPRISING Z925

sire

**HILB ORACLE C033R**

SS BABYS BREATH P035

CIRCLER ANTOINETTES STAR

dam

**LEGENDS STAR**

SS WYONA

CE	BW	WW	YW	MCE	Milk	MWW	Marb	REA	API
11.3	1.3	68.2	96.9	3.7	18.1	52.1	0.14	0.74	125.9

If you have been searching for a black blaze faced purebred that has a great look and quiet disposition check this one out. His sound, smooth build and balanced phenotype make him a logical choice to produce a group of calves with a uniform look. His dam is one that milks hard and always brings home one of the top calves in the fall.



LOT 21

CLEARWATER SIMMENTALS

21

## CLRWTR INNOVATOR G54

BD. 1/5/19 | ASA#. 3667715 | Purebred  
Tattoo. G54 | Adj. BW. 76 lbs. | Adj. WW. 695 lbs.

TJ MAIN EVENT 503B

sire

**CDI INNOVATOR 325D**

CDI MS SHEAR FORCE 49U

TRIPLE C SINGLETARY S3H

dam

**CLRWTR BECKY E54**

KR MISS BECKY P54

CE	BW	WW	YW	MCE	Milk	MWW	Marb	REA	API
13.0	-0.7	76.1	116.5	7.0	28.1	66.1	0.31	1.06	152.9

This bull is sired by the high growth Innovator bull and has an EPD profile that most will be envious of. He should calve easy and produce calves that will push the scales down and daughters that will make very productive cows. If you are interested in one that will make you money look this one up.



CLEARWATER SIMMENTALS

22

## CLRWTR MAS ROJO G652

BD. 1/7/19 | ASA#. 3667722 | Purebred  
Tattoo. G652 | Adj. BW. 87 lbs. | Adj. WW. 683 lbs.

CNS DREAM ON L186

sire

WLE UNO MAS X549

SHAWNEE MISS 770P

STF MOMENT AHEAD PJ26

dam

STF CHASTITY U652

STF MISS 652N

CE	BW	WW	YW	MCE	Milk	MWW	Marb	REA	API
12.3	-0.5	54.5	76.0	5.6	18.2	45.4	0.23	0.34	130.2

Check out this solid dark cherry red herd sire prospect. He is a moderate framed, no nonsense calving ease bull that will be a no-brainer to use on heifers. He ranks in the top 25% for calving ease and the top 10% for birth weight. His dam is a moderate framed easy keeping cow that always brings home a good one.



LOT 22

CLEARWATER SIMMENTALS

23

## CLRWTR UNO MAS G902A

BD. 1/9/19 | ASA#. 3667738 | Purebred  
Tattoo. G902A | Adj. BW. 81 lbs. | Adj. WW. 640 lbs.

CNS DREAM ON L186

sire

WLE UNO MAS X549

SHAWNEE MISS 770P

FBFS WARSAW 068W

dam

CLRWTR SHEZA GEM Z902J

SVF SHEZA STAR N902

CE	BW	WW	YW	MCE	Milk	MWW	Marb	REA	API
11.9	-0.2	55.6	77.3	4.9	20.5	48.2	0.11	0.58	118.9

Here is another bull that will be ideal to use on heifers. Backed by the proven calving ease and female maker Uno Mas. He also has excellent calving ease and birth weight EPD's plus he has that sought after baldy face to produce a group baldy feeder calves that will demand top dollar. He stems from the high performance Sheza Star tribe so keeping replacements from this future herd sire would be a smart move.



LOT 23

BESHEARS SIMMENTALS

24

## BESH/KRITSCH BULL GEU2

BD. 1/10/19 | ASA#. 3681507 | Purebred  
Tattoo. GEU2 | Adj. BW. 90 lbs. | Adj. WW. 867 lbs.

HTP/SVF DURACELL T52

sire

HPF QUANTUM LEAP Z952

RP/MP RIGHT TO LOVE 015U

W/C BF INNOCENT MAN

dam

BESH MS WINNIE EU2

TRIPLE C MISS WISCONSIN

CE	BW	WW	YW	MCE	Milk	MWW	Marb	REA	API
11.7	1.6	66.9	95.9	6.0	24.3	57.7	0.03	0.99	116.9

GEU2 is a grandson of our Miss Wisconsin donor and we see a lot of her quality traits in him. He is stout, big footed, deep, and extremely sound he should make your calves really tip the scales next fall. Semen test and BVD test results prior to sale.



HPF QUANTUM LEAP Z952 / SIRE OF LOT 24



LOT 25



LOT 26



This one is a true stand out among a deep and powerful set of herd bull prospects. He is sired by the popular and stylish Quantum Leap and backed by our predictable Lady Luck cow line. He is big centered, wide topped, thick ended bull that is big footed, wide based and genuine in his dimension. He will put performance and style into a set of calves. Homo Polled

BESHEARS SIMMENTALS

25

BESH BULL GB23

BD. 1/16/19 | ASA#. 3681323 | Purebred  
Tattoo. GB23 | Adj. BW. 84 lbs. | Adj. WW. 783 lbs.  
WS PILGRIM H182U

sire

DOZER

WW3 COUNTESS 169Y  
REMINGTON LOCK N LOAD54U

dam

BESH MS BROKEY B123

CEN MISS RED RUSH 439R

CE	BW	WW	YW	MCE	Milk	MWW	Marb	REA	API
8.5	2.8	68.8	104.5	3.5	19.1	53.5	0.16	0.91	121.7

If you're looking for a bull to add pounds to your calves GB23 is you're bull. He is a grandson of the great Red Rush cow, His dam has an awesome udder and milks extremely well. His numbers don't disappoint either and his actual birth weight was 84 LBS. Semen test and BVD test results prior to sale.

CLEARWATER SIMMENTALS

26

CLRWTR SABAN G71A

BD. 1/17/19 | ASA#. 3667731 | Purebred  
Tattoo. G71A | Adj. BW. 80 lbs. | Adj. WW. 684 lbs.  
LLSF UPRISING Z925

sire

HPF/HILL UPRISING C104

RP/MP RIGHT TO LOVE 015U  
GLS INTEGRATE Z3

dam

CLRWTR KNOCKOUT C71C

HPF MISS KNOCKOUT X071

CE	BW	WW	YW	MCE	Milk	MWW	Marb	REA	API
13.1	0.5	72.2	109.5	6.9	17.9	53.9	-0.05	0.94	117.1

This solid black Saban son will certainly be one to use to add some eye appeal and style to a group of calves without sacrificing calving ease and growth. Check out his balanced EPD profile, plus he is backed by the famous Knockout cow family.

CLEARWATER SIMMENTALS

27

CLRWTR QUANTUM LEAP G5105F

BD. 1/21/19 | ASA#. 3667700 | Purebred  
Tattoo. G5105F | Adj. BW. 108 lbs. | Adj. WW. 774 lbs.  
HTP/SVF DURACELL T52

sire

HPF QUANTUM LEAP Z952

RP/MP RIGHT TO LOVE 015U  
CCR COWBOY CUT 5048Z

dam

CLRWTR LADY LUCK E5105A

CLRWTR LADY LUCK B5105A

CE	BW	WW	YW	MCE	Milk	MWW	Marb	REA	API
9.2	4.3	89.5	130.1	4.0	20.9	65.6	0.09	1.00	126.4



CLEARWATER SIMMENTALS

28

## CLRWTR ANCHOR G58B

BD. 1/24/19 | ASA#. 3667723 | 3/4 Simmental  
Tattoo. G58B | Adj. BW. 78 lbs. | Adj. WW. 696 lbs.

CCR COWBOY CUT 5048Z

sire **CCR ANCHOR 9071B**

CCR MS BARB 2120Z

LLSF UPRISING Z925

dam **HF CORA 58C**

RP/MP TOO MUCH FUN 09Z

CE	BW	WW	YW	MCE	Milk	MWW	Marb	REA	API
10.2	1.3	69.8	100.8	5.8	21.4	56.3	0.43	0.69	133.8

This pair of flush mate brothers are ones we are extremely pleased with. We purchased their dam in the HPF dispersal as one of the high selling lots and decided to flush her to Anchor for some true herd bull prospects and were not disappointed. These two are moderate framed packed full of red meat and will be calving ease superstars. If you have a group of heifers and need a pair of bulls or just one look these two up because they will definitely get the job done and not disappoint. Both are Homo Polled.



LOT 28

DAM

CLEARWATER SIMMENTALS

29

## CLRWTR ANCHOR G58C

BD. 1/27/19 | ASA#. 3667737 | 3/4 Simmental  
Tattoo. G58C | Adj. BW. 71 lbs. | Adj. WW. 683 lbs.

CCR COWBOY CUT 5048Z

sire **CCR ANCHOR 9071B**

CCR MS BARB 2120Z

LLSF UPRISING Z925

dam **HF CORA 58C**

RP/MP TOO MUCH FUN 09Z

CE	BW	WW	YW	MCE	Milk	MWW	Marb	REA	API
10.2	1.6	73.2	105.5	5.8	20.6	57.2	0.43	0.68	134.6

This is a high API bull that is a good individual. He had an actual birth of 71 pounds so sure indicates he will be an easy calver. His dam Cora a is superior donor we purchased out of the Hudson Pines sale.



LOT 29

DAM

CLEARWATER SIMMENTALS

30

## CLRWTR QUANTUM LEAP G29

BD. 2/1/19 | ASA#. 3667714 | Purebred  
Tattoo. G29 | Adj. BW. 82 lbs. | Adj. WW. 704 lbs.

HTP/SVF DURACELL T52

sire **HPF QUANTUM LEAP Z952**

RP/MP RIGHT TO LOVE 015U

HARVIE JDFWALLBANGER111X

dam **CLRWTR EBONYS CHARM B29**

CLRWTR EBONYS CHARM W29

CE	BW	WW	YW	MCE	Milk	MWW	Marb	REA	API
11.8	1.5	73.1	110.1	4.3	22.9	59.4	-0.09	0.80	114.8

Here is a solid red Quantum Leap son that is packed full of muscle, deep bodied and sound as a cat. Look for him to sire calves with heavy weaning weights and daughters to keep as replacements.



LOT 30



#### CLEARWATER SIMMENTALS & HTP SIMMENTALS

31

### CLRWTR HTP INNOVATOR G69A

BD. 2/3/19 | ASA#. 3667733 | Purebred  
Tattoo. G69A | Adj. BW. 81 lbs. | Adj. WW. 753 lbs.

TJ MAIN EVENT 503B

sire

**CDI INNOVATOR 325D**

CDI MS SHEAR FORCE 49U

LMF MOVIN FORWARD

dam

**CLRWTR HTP DREAMS D69C**

SS MAGNIFICENT DREAMS

CE	BW	WW	YW	MCE	Milk	MWW	Marb	REA	API
13.7	0.0	76.2	112.5	7.6	27.5	65.5	0.18	0.89	145.9

First off, here is an individual that offers exceptional epds being in the top 10% for CE, top 15% for BW, top 20% for WW, top 25% for YW, top 15% for MCE, top 10% for MM, top 10% for MWW, top 15% for MB, and top 10% for API. He combines high quality with breeding leading epds. G69A is clean necked, long fronted, strong topped and good hipped plus packed with muscle and bone. This Innovator son is backed by Magnificent Dreams and Magnetic Lady.



32

NEAL BROTHERS

**NB TUITION INNOVATOR 71G**BD. 2/3/19 | ASA#. 3658670 | 5/8 Simmental  
Tattoo. 71G | Adj. BW. 84 lbs. | Adj. WW. 698 lbs.

sire

**CDI INNOVATOR 325D**TJ MAIN EVENT 503B  
CDI MS SHEAR FORCE 49U

dam

**RLWF TUITION VELVET Y138**TNT TUITION U238  
SSF BLK VELVET U477

CE	BW	WW	YW	MCE	Milk	MWW	Marb	REA	API
13.0	1.1	83.6	124.5	6.6	20.8	62.6	0.42	0.88	138.2

This is about as good as it gets. Stout, sound, soft, with plenty of dimension. Out of the popular CDI Innovator & our Tuition Velvet cow we purchased from Whelan Farms. He also has a tremendous set of EPD's. Semen tested, BVD tested, Homo Polled by pedigree, we will have Homo Black results prior to sale.

**DAM OF LOT 32**

33

BESHEARS SIMMENTALS

**BESH BULL GX27**BD. 2/7/19 | ASA#. 3681330 | Purebred  
Tattoo. GX27 | Adj. BW. 93 lbs. | Adj. WW. 737 lbs.

sire

**DOZER**WS PILGRIM H182U  
WW3 COUNTESS 169Y  
B&D 13M

dam

**BESH MS MEMORY X27**

STF REMEMBER ME 662P

CE	BW	WW	YW	MCE	Milk	MWW	Marb	REA	API
7.4	3.4	64.0	92.3	3.6	16.7	48.6	0.22	0.60	114.7

If you're looking for power than you found it in GX27. We used Dozer in search of body and mass and he delivered. GX27 will add pounds to your bottom line. Semen test and BVD test results prior to sale.

**LOT 33**

34

CLEARWATER SIMMENTALS &amp; HTP SIMMENTALS

**CLRWTR HTP BASIC MARK G457**BD. 2/10/19 | ASA#. 3667754 | 3/4 Simmental  
Tattoo. G457 | Adj. BW. 87 lbs. | Adj. WW. 689 lbs.

sire

**JASS ON THE MARK 69D**W/C LOADED UP 1119Y  
JASS SABLE`S TIME 53X  
JF MILESTONE 999W

dam

**CLRWTR HTP LOOKING GOOD**

MISS BF BASIC LOOK 457W

CE	BW	WW	YW	MCE	Milk	MWW	Marb	REA	API
8.4	2.9	71.8	105.3	3.9	19.0	54.9	0.11	0.80	117.4

Several years ago we purchased a flush out of this bull's grandmother. Well, that is the best move we have done. All the progeny bulls and heifers have done extremely well. G457 is out of the Griswold herd sire Jass On The Mark. This herd sire offers bone, hip and muscle in a neat well balanced package. He is clean made and pretty as well. The progeny will be keepers. His dam and grand dam are solid and will pass on their heritage. G457 is homozygous black.

**LOT 34**



35

BESHEARS SIMMENTALS

## BESH BULL GD334

BD. 2/15/19 | ASA#. 3681324 | Purebred  
Tattoo. GD334 | Adj. BW. 82 lbs. | Adj. WW. 785 lbs.

sire

HPF QUANTUM LEAP Z952

RP/MP RIGHT TO LOVE 015U

dam

BESH/HEGE MS SODA D334

HPF CREAM SODA B334

CE	BW	WW	YW	MCE	Milk	MWW	Marb	REA	API
11.5	1.4	68.1	95.5	5.4	22.0	56.0	0.08	0.91	120.1

If you're in the market for red bull that is a calving ease Cadillac then take a hard look here. GD334 reads well on paper, his dam side is notorious for calving ease on our farm, and he has plenty of style to boot. Semen test and BVD test results prior to sale.



36

B&K FARM & IVIE AND SONS

## B&K/IVS FULLY INSURED 34G

BD. 2/12/19 | ASA#. 3587544 | Purebred  
Tattoo. 34G | Adj. BW. lbs. | Adj. WW. lbs.

sire

W/C FULLY LOADED 90D

MISS WERNING KP 8543U

dam

SVF/3M SAZERAC A34

HTP BT SVF SAZERAC T99

CE	BW	WW	YW	MCE	Milk	MWW	Marb	REA	API
9.0	1.3	64.9	90.6	4.6	20.3	52.7	0.09	0.86	124.6

Here is a son of the Sloup bull W/C Fully Loaded which is a full brother to Bankroll. Fully Loaded has done a great job for Sloup and his partners. Surely 34G will make his path too. We exhibited this baldie calf at the North America where he gained a few friends. Fully Insured is smooth and well balanced plus has a good hip with muscle, length and a sound structure. 34G is bred well backed by Shania, T99 and Sazerac. Quality all around.



37

CLEARWATER SIMMENTALS

## CLRWTR RELENTLESS G5105K

BD. 2/13/19 | ASA#. 3667685 | 3/4 Simmental  
Tattoo. G5105K | Adj. BW. 76 lbs. | Adj. WW. 637 lbs.

sire

W/C RELENTLESS 32C

MISS WERNING KP 8543U

dam

CLRWTR LADY LUCK Y5105E

CLRWTR JOYS SHADES

CE	BW	WW	YW	MCE	Milk	MWW	Marb	REA	API
12.5	0.4	57.5	78.8	6.4	23.1	51.8	0.10	0.63	116.2

G5105K offers a superior phenotype with his balanced look and near flawless structural build that reads with true longevity and athleticism. His dam offers exceptional udder quality and maternal functionality with most body depth and spring of rib you could build into one. Then add the extreme look that relentless gives you have a winning combination. Homo Polled and Homo Black.



## BESHEARS SIMMENTALS

38

## BESH BULL GBCR

BD. 2/16/19 | ASA#. 3681329 | Purebred  
Tattoo. GBCR | Adj. BW. 94 lbs. | Adj. WW. 788 lbs.

YARDLEY UTAH Y361

sire **W/C RELENTLESS 32C**

MISS WERNING KP 8543U

R&amp;R CHAMBERLAIN X744

dam **JF LATISHA 2117Z**

JF LATISHA 5153R

CE	BW	WW	YW	MCE	Milk	MWW	Marb	REA	API
8.4	4.3	74.6	99.1	2.6	19.9	57.1	0.12	0.81	115.0

This Relentless son is out of maybe my favorite cow on the farm. Latisha gives you that smooth blend of where the commercial industry meets the show cow world. Latisha is stout, sound, elegant fronted, and looks like she swallowed a round bale whole every time you see her. GBCR is very similar to his mother and should succeed in any breeding situation. Semen test and BVD test results prior to sale.



LOT 38

## NEAL BROTHERS

39

## NB UNITED CECIL 186G

BD. 2/17/19 | ASA#. 3658655 | 5/8 Simmental  
Tattoo. 186G | Adj. BW. 79 lbs. | Adj. WW. 676 lbs.

W/C UNITED 956Y

sire **VSF UNITED 6067D**

MISS7PW267

DILLONS K217 BLACK DREAM

dam **NB CECILIA 8U**

GO4TH KB TRAVELER BELLE

CE	BW	WW	YW	MCE	Milk	MWW	Marb	REA	API
11.2	1.1	73.3	113.5	5.7	22.0	58.6	0.31	0.54	128.7

Another sound & complete bull sired by the VSF United 6067D bull that we own with Armes Simmentals. He was the top selling bull in the 2017 Iowa Beef Connection Sale. We sold his dam as a bred heifer to Todd Landis of Michigan & then bought her back a few years later. Great EPD's plus some white on his face. Semen tested, BVD tested, Homo Polled & Homo Black results prior to sale.

## BESHEARS SIMMENTALS

47

## BESH BULL GA10

BD. 2/10/19 | ASA#. 3681325 | Purebred  
Tattoo. GA10 | Adj. BW. 93 lbs. | Adj. WW. 898 lbs.

HTP/SVF DURACELL T52

sire **HPF QUANTUM LEAP Z952**

RP/MP RIGHT TO LOVE 015U

JF AMERICAN PRIDE 0987X

dam **OBCC FIREFLY 139A**

LLSF MISS TITAN XU741

CE	BW	WW	YW	MCE	Milk	MWW	Marb	REA	API
12.2	2.0	73.6	106.0	6.3	18.0	54.7	0.12	0.81	127.4

These two flushmates combine a lot of quality features to appeal to a breeder. They are in the top 40% in both YW and API, top 30% in WW, and top 25% in CE and TI. Phenotypically they are very similar. Deep bodied, sound structured, and smooth made. There will be no more progeny to come from their donor dam, that was a many time champion for Circle M farms, as she passed last fall. If you're looking to produce seedstock, commercial feed lot cattle, calving ease, pounds of gain, or eye appeal these two bulls should check all your boxes. Semen test and BVD test results prior to sale.



LOT 41



DAM

## NEAL BROTHERS

40

## NB SO UNITED 10G

BD. 2/20/19 | ASA#. 3658668 | 1/2 Simmental  
Tattoo. 10G | Adj. BW. 82 lbs. | Adj. WW. 705 lbs.

W/C UNITED 956Y

sire **VSF UNITED 6067D**

MISS7PW267

APEX WINDY 078

dam **NB MISS SINDY 10C**

NB SOLIEL

CE	BW	WW	YW	MCE	Milk	MWW	Marb	REA	API
10.4	1.1	78.2	120.1	4.9	22.8	61.9	0.32	0.46	124.8

A very nice February bull that is structurally sound & correct with plenty of depth & thickness, with an excellent set of EPD's. For an added bonus he has some white on his face. Semen tested, BVD tested, Homo Polled & Homo Black results prior to sale.



BESHEARS SIMMENTALS

42

## BESH BULL GA34

BD. 2/17/19 | ASA#. 3681326 | Purebred  
Tattoo. GA34 | Adj. BW. 91 lbs. | Adj. WW. 742 lbs.

sire

HPF QUANTUM LEAP Z952

RP/MP RIGHT TO LOVE 015U

dam

OBCC FIREFLY 139A

LLSF MISS TITAN XU741

CE	BW	WW	YW	MCE	Milk	MWW	Marb	REA	API
12.2	2.0	73.6	106.0	6.3	18.0	54.7	0.12	0.81	127.4

Semen test and BVD test results prior to sale.



Hatmaker

CLEARWATER SIMMENTALS

43

## CLRWTR SPECIAL ORDER G509

BD. 2/17/19 | ASA#. 3667712 | Purebred  
Tattoo. G509 | Adj. BW. 96 lbs. | Adj. WW. 714 lbs.

sire

W/C EXECUTIVE ORDER 8543B

MISS WERNING KP 8543U

WS ALL-AROUND Z35

dam

STAV MS ALL AROUND 509C

MISS JRW ANTIONETTE Z121

CE	BW	WW	YW	MCE	Milk	MWW	Marb	REA	API
12.9	0.3	80.5	122.8	4.8	22.9	63.2	0.07	0.95	130.4

Special Order is just that he is a phenotypically and genomically well-balanced Homo Polled Purebred herd sire prospect. Note his low birth and high growth spread which says he should work well on heifers and sire calves that will continue to grow. He is a bold ribbed, deep centered, thick topped bull with an abundance of width and shape. Don't let this one get away on March 28th. Homozygous Polled.



CLEARWATER SIMMENTALS

44

## CLRWTR RIMROCK G123A

BD. 2/20/19 | ASA#. 3667699 | Purebred  
Tattoo. G123A | Adj. BW. 88 lbs. | Adj. WW. 793 lbs.

WS BEEF KING W107

sire

CDI RIMROCK 325Z

CDI MS TOP GUN 5U

TJ SHARPER IMAGE 809U

dam

CLRWTR CHICA A123

CLRWTR JOYS CHICA X123A



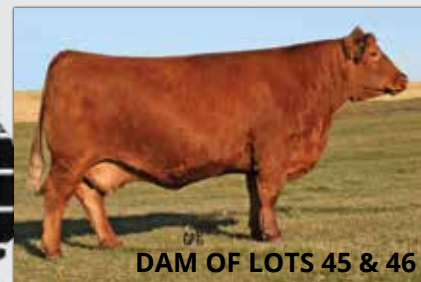
LOT 44

CE	BW	WW	YW	MCE	Milk	MWW	Marb	REA	API
10.4	1.0	79.1	115.0	5.6	21.1	60.6	0.22	0.76	135.7

If you are in need of a bull to use on a group of heifers take a look at this one. We have used his sire Rimrock on heifers due to his extreme calving ease and have gotten along very well. This bulls mother also puts a punch of growth in the mix, we look for this one to sire some very marketable heavy weaning calves.



LOT 46



DAM OF LOTS 45 & 46

BESHEARS SIMMENTALS

45

## BESH BULL GM163

BD. 3/1/19 | ASA#. 3681332 | Purebred  
Tattoo. GM163 | Adj. BW. 81 lbs. | Adj. WW. 873 lbs.

BESHEARS SIMMENTALS

46

## BESH BULL GD23

BD. 3/3/19 | ASA#. 3681333 | Purebred  
Tattoo. GD23 | Adj. BW. 80 lbs. | Adj. WW. 831 lbs.

REMINGTON LOCK N LOAD54U

sire

W/C LOADED UP 1119Y

AUBREYS BLACK BLAZE III

WFL MR WESTWAY 200M

dam

CEN MISS RED RUSH 439R

CEN MISS NEBRASKA 425N

CE	BW	WW	YW	MCE	Milk	MWW	Marb	REA	API
11.5	1.8	56.4	85.1	5.7	21.5	49.6	-0.04	0.95	125.7

LOT 45

These two flush brothers are out of the great Red Rush cow and can be admired by many producers. They are moderate framed, long bodied and full of red meat. If you're in the market for a calving ease bull that should add some shape to your calves, look here. Semen test and BVD test results prior to sale.





LOT 47

47

BESHEARS SIMMENTALS

**BESH BULL G27**

BD. 3/2/19 | ASA#. 3681328 | Purebred  
Tattoo. G27 | Adj. BW. 81 lbs. | Adj. WW. 755 lbs.

*sire* CNS PAYS TO DREAM T759  
**LLSF PAYS TO BELIEVE ZU194**  
LLSF URABABYDOLL U194  
*dam* LLSF UPRISING Z925  
**HPF CREAM SODA B334**  
IC CREAM SODA R56

CE	BW	WW	YW	MCE	Milk	MWW	Marb	REA	API
8.2	2.9	72.6	105.3	3.3	18.0	54.2	0.09	0.84	113.0

This solid black son out of our Cream Soda donor should add value to any seed stock operation. G27 is good structured with loads of capacity. He would also be a great option to use on heifers, Soda's natural calves have averaged an 80 lb birthweight. Semen test and BVD test results prior to sale.



LOT 48

48

CLEARWATER SIMMENTALS

**CLRWTR RESISTANCE G11**

BD. 3/2/19 | ASA#. 3667726 | Purebred  
Tattoo. G11 | Adj. BW. 79 lbs. | Adj. WW. 778 lbs.

*sire* CCR DREAM BETTER 3058T  
**CLRWTR RESISTANCE D74H**  
HF SERENA  
*dam* CNS DREAM ON L186  
**MISS CCF SHEZA DAYDREAM**  
SVF SHEZA FANTASY N906

CE	BW	WW	YW	MCE	Milk	MWW	Marb	REA	API
11.7	1.4	69.8	102.2	4.0	17.1	51.9	0.00	0.85	117.7

Here is one sired by our senior herd sire Resistance. He always stamps his calves with a very nice look and a punch of extra grow. He is long bodied, thick topped, big boned masculine herd sire prospect that offers over 770 pounds of weaning weight performance yet boasts a sensible birth weight of 79 lbs. His Dream On dam has been an excellent producer stemming from the Sheza Fantasy cow family.



LOT 49

49

BESHEARS SIMMENTALS

**BESH BULL X29**

BD. 3/10/19 | ASA#. 3681331 | Purebred  
Tattoo. G29 | Adj. BW. 85 lbs. | Adj. WW. 834 lbs.

*sire* MR HOC BROKER  
**WHEATLAND BULL 4107B**  
WHEATLAND LADY 742T  
STF UNANIMOUS UP26  
*dam* **BESH MS UNANIMOUS X29**  
WHEATLAND LADY 825U

CE	BW	WW	YW	MCE	Milk	MWW	Marb	REA	API
9.9	2.6	71.0	102.7	5.7	21.5	56.9	-0.07	0.66	113.5

This solid red bull combines a lot of real essential tools to any breeder, structure, performance, eye appeal, and great cow families. Quite frankly he is one of my favorites in this offering. Semen test and BVD test results prior to sale.



50

## CLEARWATER SIMMENTALS

## CLRWTR NIGHT WATCH G94C

BD. 3/12/19 | ASA#. 3667689 | Purebred  
Tattoo. G94C | Adj. BW. 76 lbs. | Adj. WW. 719 lbs.

CCR ANCHOR 9071B

sire **W/C NIGHT WATCH 84E**

MISS WERNING KP 8543U

WS ALL-AROUND Z35

dam **CLRWTR SAZERAC C94C**

CLRWTR SAZERAC Z94F

CE	BW	WW	YW	MCE	Milk	MWW	Marb	REA	API
15.5	-1.9	70.1	99.9	8.5	24.5	59.4	0.20	0.78	144.0

This young stud is one that checks all of the boxes He is in the top 3% for calving ease and birth weight he will make a sleep easy calving ease sire that still has enough growth to sire calves that will push the scales down. He also ranks in the top 10% in both API & TI. To make this even more tempting he is backed by one of the top cows in the breed Queen Sazerac.



LOT 50

51

## BESHEARS SIMMENTALS

## BESH BULL GB62

BD. 3/17/19 | ASA#. 3681322 | Purebred  
Tattoo. GB62 | Adj. BW. 90 lbs. | Adj. WW. 975 lbs.

BESHEARS TRUE MANT7

sire **BESH BULL 739W**

STF MISS 739W

MR NLC UPGRADE U8676

dam **BESH MS NYLON B62**

SOSF EBONY'S BLACK SILK

CE	BW	WW	YW	MCE	Milk	MWW	Marb	REA	API
10.9	1.1	66.6	95.3	6.3	22.2	55.5	0.03	1.00	122.9

Flat out combines everything a commercial or purebred breeder could want. Calving ease, high weaning weight, good yearling weight, and a good disposition. His Dam is one of the best cows in our herd and his EPDs are very favorable. Semen test and BVD test results prior to sale.



LOT 51

52

## CLEARWATER SIMMENTALS

## CLRWTR NIGHTWATCH G5

BD. 3/19/19 | ASA#. 3667755 | Purebred  
Tattoo. G5 | Adj. BW. 81 lbs. | Adj. WW. 709 lbs.

CCR ANCHOR 9071B

sire **W/C NIGHT WATCH 84E**

MISS WERNING KP 8543U

MR HOC BROKER

dam **JS SOUTHERN BELLE 5B**

JS FLATOUT FLIRTY 46T

CE	BW	WW	YW	MCE	Milk	MWW	Marb	REA	API
13.6	-0.2	64.5	90.0	7.4	24.3	56.5	0.09	0.83	129.3

This bull is a logical heifer bull candidate that will not sacrifice pay weight when it counts boasting a weaning weight of over 700 lbs. He is the natural calf of one of our lead donors we go to for that something special look, his dam is an own daughter of Flatout Flirty. We have sold numerous high selling lots out of this female. Homo Black and Homo Polled.



LOT 52



Beshears

LOT 53



J2 MS. DIVAT04 / DAM OF LOTS 53-55

This is our first year in the Clear choice bull sale and we were very thankful to be invited. So we wanted to offer something unique and special, and decided what better way than to offer three daughters out of one of the original matriarchs of our farm. Ms. Diva has been nothing short of a great producer for us for many years and we are still having ET calves out of her to this date. Producing many champions and high sellers for us over the last 12 years. Her daughters have also went on to produce desirable and marketable cattle in our customer's herds as well. Her calves still very much in demand just last year she had a full sister to E1B sell in Denver to the tune of 6,500 that had a great show career and another full sister crowned champion many times for Colt Thomas. Both E1B and B51 have extremely nice heifer calves on their sides and C54 should have a calf on her side a little closer to sale time. These are not cows we are selling because they are old or have feet problems. All three cows are in the prime of their lives, or just getting started in the case of E1B. These are cows we are selling because we want to add more value to our offering in this sale and offer cattle our customers can go on and make money with after their investment.

BESHEARS SIMMENTALS

## BESH/KDH MS DIVA E1B

BD. 2/6/17 | ASA#. 3330272 | 1/2 Simmental  
Tattoo. E1B | Adj. BW. 86 lbs. | Adj. WW. lbs.

GAMBLES HOT ROD

SILVEIRAS STYLE 9303

SILVEIRAS ELBA 2520

CNS DREAM ON L186

J2 MS. DIVAT04

ET MS GIRL 52M

CE	BW	WW	YW	MCE	Milk	MWW	Marb	REA	API
9.4	0.3	56.9	83.0	5.6	18.0	46.4	0.25	0.52	126.7

53A: Heifer calf at side, BESH MS DEZ HEY1 (ASA# 3688140) born on 2/1/20, sired by WLE COPACETIC E02 (ASA# 3299037)

BESHEARS SIMMENTALS

## BESH MS DILLY C54

BD. 1/22/15 | ASA#. 2985533 | Purebred  
Tattoo. C54 | Adj. BW. 78 lbs. | Adj. WW. lbs.

SS EBONY'S GRANDMASTER

WS A STEP UP X27

WS MS MACHO U38

CNS DREAM ON L186

J2 MS. DIVAT04

ET MS GIRL 52M

CE	BW	WW	YW	MCE	Milk	MWW	Marb	REA	API
10.1	0.9	61.0	84.8	1.6	21.7	52.1	-0.08	0.91	109.0

AI'd to Tehama Tahoe, ASA#3396482 on 6/4/19

BESHEARS SIMMENTALS

## BESH MS STEP UP B51

BD. 3/6/14 | ASA#. 2881681 | Purebred  
Tattoo. B51 | Adj. BW. 83 lbs. | Adj. WW. lbs.

SS EBONY'S GRANDMASTER

WS A STEP UP X27

WS MS MACHO U38

CNS DREAM ON L186

J2 MS. DIVAT04

ET MS GIRL 52M

CE	BW	WW	YW	MCE	Milk	MWW	Marb	REA	API
10.8	0.2	59.2	82.1	1.8	22.1	51.6	-0.08	0.91	114.5

55A: Heifer calf at side, BESH MS TAHOE HB51 (ASA# 3688141) born on 2/3/20, sired by TEHAMA TAHOE B767 (ASA# 3396482)



LUCKY PENNY CATTLE COMPANY

56

## HPW MELBA MAE 02F

BD. 4/9/18 | ASA#. 3408442 | 1/2 Simmental  
Tattoo. 02F | Adj. BW. 88 lbs. | Adj. WW. lbs.

HARVIE JDFWALLBANGER111X

sire

CLRWTR WALLBANGER B54

KR MISS BECKY P54

GXK COMMON SENSE

dam

HPW COMSENS MISS MABEL

STCC ROLE MODEL 077X

CE	BW	WW	YW	MCE	Milk	MWW	Marb	REA	API
8.6	1.5	63.0	99.6	3.1	19.5	51.0	0.04	0.56	97.0

AI'd to Hook's Black Hawk 50B, ASA# 2854467 on 11/23/19 then PE HLC MR Pep E77, ASA# 3397232 from 12/3/19 to 1/20/20 then PE to CLRWTR Absolute E5C, ASA# 3330538 from 1/21/20 to 2/15/20

This stylish heifer is an eye catcher! She won't disappoint!

LUCKY PENNY CATTLE COMPANY

58

## NAHF MISS ROCK 813F

BD. 1/12/18 | ASA#. 3486457 | 1/2 Simmental  
Tattoo. 813F | Adj. BW. 69 lbs. | Adj. WW. 683 lbs.

WS BEEF KING W107

sire

CDI RIMROCK 325Z

CDI MS TOP GUN 5U

dam

LUCKYS RITA 455B

CE	BW	WW	YW	MCE	Milk	MWW	Marb	REA	API
12.8	-0.6	60.9	83.7	7.1	20.0	50.4	0.47	0.50	122.2

AI'd to Hook's Black Hawk 50B, ASA # 2854467 on 11/23/19 then PE HLC MR Pep E77, ASA# 3397232 from 12/3/19 to 1/20/20 then PE to CLRWTR Absolute E5C, ASA# 3330538 from 1/21/20 to 2/15/20

A high-performance female made to fit anyone's preferences.

LUCKY PENNY CATTLE COMPANY

60

## NAHF MISS MARGO 7112E

BD. 12/26/17 | ASA#. 3486452 | 1/2 Simmental  
Tattoo. 112E | Adj. BW. 74 lbs. | Adj. WW. 639 lbs.

TRIPLE C INVASION R47K

sire

LMF MOVIN FORWARD

LMF GODIVAS BEAUTYSTROKE

dam

LUCKYS MARGO 501C

CE	BW	WW	YW	MCE	Milk	MWW	Marb	REA	API
9.9	1.8	57.1	86.9	4.7	18.9	47.4	0.26	0.40	109.3

AI'd to GCC Gold Standard X615, ASA# 2654167 on 11/23/19 then PE HLC MR Pep E77, ASA# 3397232 from 12/3/19 to 1/20/20 then PE to CLRWTR Absolute E5C, ASA# 3330538 from 1/21/20 to 2/15/20

This heifer goes back to a purebred Angus female that has raised several excellent females for us. This girl is shaping up to be just like her Momma!

LUCKY PENNY CATTLE COMPANY

57

## HPW EVE 46F

BD. 5/7/18 | ASA#. 3408443 | 1/2 Simmental  
Tattoo. 46F | Adj. BW. 113 lbs. | Adj. WW. lbs.

HARVIE JDFWALLBANGER111X

sire

CLRWTR WALLBANGER B54

KR MISS BECKY P54

dam

GXK MS SABLE T68 18Y

CE	BW	WW	YW	MCE	Milk	MWW	Marb	REA	API
5.1	4.5	73.0	116.9	1.3	19.3	55.7	0.00	0.50	87.0

AI'd to Koch Big Timber 685D, ASA# 3133113 on 11/23/19 then PE HLC MR Pep E77, ASA# 3397232 from 12/3/19 to 1/20/20 then PE to CLRWTR Absolute E5C, ASA# 3330538 from 1/21/20 to 2/15/20

This heifer goes back to our proven Wallbanger bull. Her pedigree will allow her raise excellent outcrossed genetics.

LUCKY PENNY CATTLE COMPANY

59

## NAHF MAGNETIC LADY 7103E

BD. 12/24/17 | ASA#. 3486447 | 1/2 Simmental  
Tattoo. 103E | Adj. BW. 66 lbs. | Adj. WW. 584 lbs.

LMF MOVIN FORWARD

sire

NAHF LOOKIN FORWARD 635D

SS MAGNIFICENT DREAMS

dam

218

CE	BW	WW	YW	MCE	Milk	MWW	Marb	REA	API
12.4	0.0	46.2	65.8	7.2	20.9	44.0	0.09	0.29	101.3

AI'd to GCC Gold Standard X615, ASA# 2654167 on 11/23/19 then PE HLC MR Pep E77, ASA# 3397232 from 12/3/19 to 1/20/20 then PE to CLRWTR Absolute E5C, ASA# 3330538 from 1/21/20 to 2/15/20

This bred heifer is a big, broody female built to be an excellent mother in any herd!

BESHEARS SIMMENTALS

67

## BESH MS PROWL Y28

BD. 3/1/11 | ASA#. 2586915 | Purebred  
Tattoo. Y28 | Adj. BW. 81 lbs. | Adj. WW. 689 lbs.

WHEATLAND BULL 131L

sire

WHEATLAND BULL 680S

WHEATLAND LADY 351N

PROWLER

dam

RAVE MISS PROWL 972J

RAVE MS FS 972G

CE	BW	WW	YW	MCE	Milk	MWW	Marb	REA	API
0.2	7.3	66.1	102.3	-2.1	12.0	45.0	0.04	0.91	96.5

PE to Besh Happy Time D910, ASA# 3149570 from 5/21/19 to 7/15/19

That is a big, stout, feminine fronted, long bodied female, that weans a big stout calf off every year. She is good footed and ready to go to work.

## BESHEARS SIMMENTALS

62

## WHEATLAND LADY 127Y

BD. 1/19/11 | ASA#. 2996153 | Purebred  
Tattoo. LER 127Y | Adj. BW. lbs. | Adj. WW. lbs.

WHEATLAND BULL 680S

sire

## WHEATLAND STOUT 930W

WHEATLAND LADY 737 T

WHEATLAND'S INFERNO 325N

dam

## WHEATLAND LADY 614S

WHEATLAND LADY 129L

CE	BW	WW	YW	MCE	Milk	MWW	Marb	REA	API
6.0	3.8	67.8	102.9	1.6	17.9	51.7	-0.04	0.71	104.0

PE to Besh Happy Time D910, ASA# 3149570 from 5/21/19 to 7/15/19  
127Y is long bodied, super stout, big footed and as sound as you can make one. Here pedigree is unique and will bring a lot of breeding options to the table. She still lots of miles left on her treads.

## CLEAR WATER SIMMENTALS

64

## CLRWTR GOGO T42

BD. 1/31/07 | ASA#. 2394766 | Purebred  
Tattoo. T42 | Adj. BW. 79 lbs. | Adj. WW. 592 lbs.

HC POWER DRIVE 88H

sire

## TRIPLEC EL PODEROSO REY

JSF FIESTA

SRS J914 PREFERRED BEEF

dam

## CLEAR WATER PREF LADYN42

B B MS BALLAGH 42B

CE	BW	WW	YW	MCE	Milk	MWW	Marb	REA	API
8.4	2.2	66.0	104.3	6.4	25.0	58.0	0.03	0.74	116.3

PE to Hill/HPF Uprising C104 "Saban", ASA# 2975488 from 5/30/19 to 7/12/19

Here is a faithful cow that has had several calves in our past sales. Ponderosa Rey and Preferred Beef. She will calve to the Saban bull that is out of the great family of Right to Love.



GWS/SCF RENDITION / SERVICE SIRE OF LOTS 66-68

## CLEAR WATER SIMMENTALS

63

## CLW WTR ALLISON S406G

BD. 1/5/06 | ASA#. 2349409 | Purebred  
Tattoo. S406G | Adj. BW. 73 lbs. | Adj. WW. 591 lbs.

KYKSO KALGER

sire

## BAR 5 KALGERY 402J

NIEMANDIA KLEIN-KAROO

BURNS BULL X339U

dam

## CLRWTR MS ALLISON G406U

BURNS COW U0406

CE	BW	WW	YW	MCE	Milk	MWW	Marb	REA	API
8.5	0.7	54.6	72.7	2.5	22.3	49.5	-0.20	0.63	91.5

63A: Heifer calf at side, H406 (ASA# Pending) born on 3/5/20, sired by CLRWTR Resistance D74H, ASA# 3155145

Allison is a functional female that has loads of Fleckvieh influence. She offers some different genetics, her dam has been in the herd for many years. Longevity is important. She will calve to Resistance.

## CLEAR WATER SIMMENTALS

65

## HPF CIRT MS SPECIAL T508

BD. 1/14/07 | ASA#. 2387989 | Purebred  
Tattoo. T508 | Adj. BW. 60 lbs. | Adj. WW. 537 lbs.

CNS DREAM ON L186

sire

## JDJ CHARISMA 20P

NICHOLS BEAUTY D93

HC POWER DRIVE 88H

dam

## DOUBLE R SOMETHING SPECI

BS MISS FORTUNE 500 2023

CE	BW	WW	YW	MCE	Milk	MWW	Marb	REA	API
7.6	2.5	61.5	91.0	4.9	15.8	46.5	0.02	0.66	114.6

65A: Bull calf at side, H508 born on 2/27/20, sired by Hill/HPF Uprising C104 "Saban" (ASA# 2975488)

You want a production oriented cow. This is why they stay in the herd. They make money. She will calve to Saban.

## CLEAR WATER SIMMENTALS

66

79

BD. 6 yrs old | Commercial

AI'd to GWS/SCF Rendition, ASA# 2374630 on 1/5/20

## CLEAR WATER SIMMENTALS

67

181

BD. 4 yrs old | Commercial

AI'd to GWS/SCF Rendition, ASA# 2374630 on 1/27/20

## CLEAR WATER SIMMENTALS

68

92

BD. 4 yrs old | Commercial

AI'd to GWS/SCF Rendition, ASA# 2374630 on 1/27/20



*Join us for at our  
upcoming sales!*



THE CLEAR  
CHOICE

CUSTOMER SALE / APRIL 25, 2020

FEMALE SALE / OCTOBER 24, 2020



# Bear Branch Supply

*Custom Blends & Delivery*

bearbranchsupply@gmail.com

13637 Aberdeen Rd

Dillsboro IN 47018

812-667-5304



**SHOW·RITE**  
Show Feeds... Done Rite!





Sales Management

Doug & Debbie Parke  
Drew & Holli Hatmaker  
153 Bourbon Hills  
Paris, KY 40351  
[www.dpsalesllc.com](http://www.dpsalesllc.com)



# THE CLEAR CHOICE *bull sale*

**SATURDAY, MARCH 28, 2020**  
**1:00 PM EST • MILAN, IN**

*Selling 60 Simmental & SimAngus Bulls*  
*20 Simmental & Sim-Influenced Pairs & Bred Females*