



4TH ANNUAL
THE CLEAR
CHOICE
female sale

SATURDAY, OCTOBER 23, 2021

12:00 PM EST • MILAN, IN

Selling 60+ Simmental & SimAngus Females

Show Heifer Prospects, Proven Donors & Bred Females

SALE SCHEDULE

Friday, October 22nd

All Day . . . Cattle on display for viewing
6:00 PM . . . Meal and presentation provided
by Purina

Saturday, October 23rd

8:00 AM . . . Cattle on display for viewing
12:00 PM . . . The Clear Choice Female Sale

SALE LOCATION

ClearWater Simmentals Sale Facility
5512E St Rd 350 Milan, IN 47031
*Sale facility has hard surface parking and is
handicap accessible.*

HOTELS

Double Tree 812-539-8888
51 Walnut St, Lawrenceburg, IN
Hampton Inn 812-663-5000
2075 N Michigan Ave, Greensburg, IN
Holiday Inn 812-663-5500
915 W Ann Blvd, Greensburg, IN

TRUCKING

Brian Wyatt 423-240-5533
Dick Coleman 765-461-0954

SALE TERMS & CONDITIONS

All animals will be sold in accordance with the suggested guidelines of the American Simmental Association. For updated EPDs, genetic status, plus the current ASA guidelines and conditions go to www.simmental.org. Announcements made sale day and from the auction block take precedence over printed material associated with this sale. Anyone attending this sale attends at his or her own risk. ClearWater Simmentals, DP Sales Management, LLC, or guest consignors will not be responsible for any personal injury while attending this sale.

SALE DAY PHONES

Doug Parke 859-421-6100
Drew Hatmaker 423-506-8844
Holli Hatmaker 859-707-5248
Leah Meinders 812-498-2840
Jeff Meinders 812-871-1313
Bobby Beshears 765-717-4789
Jon Jordon 765-412-1450

AUCTIONEER

Thomas Carper 540-336-2737

SALE STAFF

Chris Smith 217-370-1908
Ryan Haefner, *Consultant* 815-499-0522
Dalton Lundy, *Consultant* 502-727-6898
Tim Schwab, *Consultant* 812-569-8536
Austin Sorenson, *Consultant* 712-310-3788
Jacob Schwab, *Ring Staff* 812-212-2095
Mike Berger, *Ring Staff* 574-850-5605

ONLINE BIDDING

DVAuction
Broadcasting Real-Time Auctions

SALE REGISTRATION & PAYMENT

All buyer numbers will only be issued with a valid ID and payment is due day of sale. DP Sales Management, LLC accepts Visa, MasterCard, check, e-check, or cash. All purchases are expected to be paid day of sale unless arrangements have been made with sale management. Cattle will not be transferred until paid for in full. Purchases made through internet bidding follow the same terms. Payment must be completed on day of sale by credit card or e-check.

Guest Breeders



Beshears Simmentals
Kenny, Bobby & David Beshears
and Family
Winchester, IN
765-717-4789



Jordon Simmentals
Jon & Heather Jordon
Hailey, Reed, Jake and Jobi
Jerry & Linda Jordon
Shirley, IN
765-412-1450



DONATED BY CLEARWATER SIMMENTALS, JEFF & LEAH MEINDERS

2022 Eastern Regional Donation Lot

We are always happy to support the future of the Simmental breed. We look forward to attending the 2022 Eastern Regional hosted by the state of Indiana under the direction of Jill Harker. We are happy to donate an item to be auctioned off to support the event.

Catalog designed by
6 Generation 6
marketing
www.generation6.co

Welcome!

It's hard to believe that we're about to host our 4th Annual Female Sale! As they say time flies when you're having fun. Each year has its own set of challenges and rewards. After all this year has had to offer, we are honored that you have taken the time to go through our offering this year. We've been blessed with a healthy calf crop and some of our most exciting matings to date.

While being able to sell impressive donors is nice, it is the consistent, strong foundational cow herd that has built our program. So, this year we decided to dig deep into our bred heifer pen to offer to you some of our best daughters of some of most consistent cows in the ClearWater operation. This is a group of females led off by the diversity of the great Serena family. It is exciting to be able to offer you Serena daughters by multiple sires right in the prime of their lives; that is what great donor cows are supposed to produce for the future.

Of course, we think there are some exciting younger females in the sale too. To be quite honest, it might be hard for us to tell you our "pick" or our "favorite" this year because there are so many. We hope that you find that difficult as well as you flip through the pages.

Like always, if we can be of any assistance please feel free to contact us. The cattle will be on display sale week if you want to come view without a crowd. We look forward to sharing this set of females with our friends and customers in the Simmental breed. We also appreciate Bobby & Kenny Beshears & Family along with Jordon Simmentals bringing an top notch offering. We are serious about Simmentals and invite you to be with us October 23rd.

Jeff & Leah Meinders
ClearWater Simmentals



**CLEARWATER
SIMMENTALS**

ClearWater Simmentals
Jeff & Leah Meinders / Milan, Indiana
Leah Meinders, 812-498-2840
Jeff Meinders, 812-871-1313
www.clearwatersimmentals.com



Doug & Debbie Parke / Drew & Holli Hatmaker
Doug, 859-421-6100 / Office, 859-987-5758
Drew, 423-506-8844 / Holli, 859-707-5248
153 Bourbon Hills Paris, KY 40361
office@dpsalesllc.com / www.dpsalesllc.com

Free Showman Clinic & Meal

"Best practices for your show calf" presentation for youth the evening before the sale, **Friday, October 22nd at 6:00 pm.** Topics will include daily care, feed, and showmanship. Join us for pizza and door prizes throughout the evening. **RSVP to 217-722-0787 or email MMyerscough@landolakes.com**



4TH ANNUAL THE CLEAR CHOICE female sale

**SATURDAY, OCTOBER 23, 2021
12:00 PM EST • MILAN, IN**

First off, we at DP Sales Management want to invite you to the 4th annual Clearwater Clear Choice sale at the Milan, Indiana location. We in the seed stock business and the agriculture world have always been faced with challenges over the years. The last two years have been just that however we still try to be safe and go along with our job of doing our best and continue feeding the world. Just a reminder, the average U.S. farmer feeds 166 people. At Clear water Farms and Beshears Simmental they have breeding programs which includes producing bulls to commercial and purebred breeders, offering the top of their bred heifers and supplying the best open heifers for today's market. Both breeding programs assist their customers by hosting a customer sale. So, the goals are very similar offering breed leading genetics that advances their own individual operations and works for customers in Indiana and across the U.S.

Over the years Clearwater takes pride in their breeding program especially on the bulls and bred heifers. It is good to have satisfied customers and junior members. From last year's sale several opens have done exceptional well for many kids like Drew Veshlage, JJ Jackson and many others. The show prospects are the best set of opens offered by these two breeding programs. Come and look and decide what fits your needs and will be in the purple and work in the end for your cow herd. The bred females are the most consistent ever and bred right to produce that elite offspring. As you go through the catalog before arriving on sale day, the proven cows are a big standout and should be easy to find in the sale pens. I would encourage any interested party to call and visit with Leah or Bobby about their program and genetics. The end result is the cattle must work for you in your environment and to produce another happy and satisfied customer.

We along with Leah, Jeff, Bobby and Jon again invite you to Milan. Whether you are a past customer or new you will find the utmost hospitality for sure. If you see the catalog online or in your mailbox and want to view prior to sale week call Bobby or Leah. As in the past for buyers that can't attend utilize DV Auctions. If Drew, Holli or I can be of any assistance on any matters on the sale or assist in your purchases give us a call or even shoot us a text. We want you to have a Clear Choice. The genetics are here.

Doug Parke

DP Sales Management

WHE Andie Daughters

WHE ANDIE 365A
Dam of Lots 1A, 1B & 1C



WHE Summer



Lot 1A

BESHEARS SIMMENTALS

1A

BESH *Ms Winter* JDBC

BD. 1/2/21 • ASA#. 3930198 • Purebred Open Heifer
Tattoo. JDBC • Adj. BW. 77 lbs.

Sire: S D S GRADUATE 006X
CCR WIDE RANGE 9005A
CCR MS APPLE 9332W
MR HOC BROKER
Dam: WHE ANDIE 365A
PRS SUMMER W364

CE	BW	WW	YW	MCE	Milk	MWW	Marb	REA	API
11.2	2.1	85.5	126.7	6.6	18.7	61.4	-0.14	1.05	121.9

1B

BESH *Ms Ava* JA24

BD. 3/27/21 • ASA#. 3930223 • Purebred Open Heifer
Tattoo. JA24 • Adj. BW. 89 lbs.

1C

BESH *Ms Anna* J67

BD. 4/18/21 • ASA#. 3930243 • Purebred Open Heifer
Tattoo. J67 • Adj. BW. 79 lbs.

Sire: CCR ANCHOR 9071B
LLSF VANTAGE POINT F398
HPF RITE 2 LUV 398D
MR HOC BROKER
Dam: WHE ANDIE 365A
PRS SUMMER W364

CE	BW	WW	YW	MCE	Milk	MWW	Marb	REA	API
12.2	2.4	84.5	123.5	6.3	26.1	68.4	0.10	0.76	126.4

Lots 1A, 1B & 1C: Without a doubt, the best set of sisters we have ever offered. When we purchased Andie in Denver almost 2 years ago it was a major boost to our program. We knew she had proven herself with a few matings like WHE Summer 365H, WHE Andie 369F, and WHE Autumn 365E, those 3 females have a show winning sheet longer than a CVS receipt, with accolades like supreme overall Kansas City, supreme overall Iowa State Fair, champion heifer NAILE, reserve champion heifer Kansas City, champion PTP show heifer of the year, 3rd overall PTP show heifer of the year, and division winner at every major show in the country. Most recently our partners at WHE have done it again with WHE Andie 368H, top 5 at both Eastern Regionals and Simmental Breeders Sweepstakes yet this year as a fall calf. The most impressive part about these accomplishments is she has done it with four different sires. When we get to evaluate these three sisters, they are different, but one thing is certain the structure of these three females is impeccable. Starting from the ground up they are good footed, extremely fluid in their movement, level from their shoulders to their pins, and their necks come out at the highest point on their shoulders. We think the future is very bright for this trio of heifers, and if check her cow card you will know these are the only three females we had on our farm out of Andie, so we truly are offering our best this sale. As we continue to grow and improve, we are offering choice. We will sell 2 of these 3 and keep the third for ourselves.



Lot 1B



Lot 1C

2

CLEAR WATER SIMMENTALS

CLRWTR *Cierra* H145

BD. 2/14/20 • ASA#. 3809461 • Purebred Bred Heifer
Tattoo. H145 • Adj. BW. 125 lbs.

MR CCF VISION

sire CLRWTR 24/7 E93A

HTP SVF DEW THE STROKE

HOOK'S BLACK HAWK 50B

dam WHF/LF CIERRA 145E

WHF CIERRA 245C



Lot 2

CE	BW	WW	YW	MCE	Milk	MWW	Marb	REA	API
5.3	7.1	96.2	145.0	2.4	19.7	67.7	0.09	1.25	118.7

AI'd to WHF/JS/CCS Double Up (ASA# 3658592) on 4/3/21, PE to TJ Rage (ASA# 3762954) from 4/30/21 to 8/14/21

Cierra is in the top 3% for WW and REA and the top 5% for YW.

Serena Daughters



Haefner

Lot 3



CLRWTR SERENA D74R - Dam

3

CLEAR WATER SIMMENTALS

CLRWTR Cool Cat J74E

BD. 2/19/21 • ASA#. 3928505 • Purebred Open Heifer
Tattoo. J74E • Adj. BW. 99 lbs.

YARDLEY UTAH Y361

sire **W/C RELENTLESS 32C**

MISS WERNING KP 8543U

W/C LOADED UP 1119Y

dam **CLRWTR SERENA D74R**

HF SERENA

Hopefully you can see why many visitors like the Cool Cat. This Relentless from day one has had the look, the strut and just all the pieces to develop in a good bred and future donor cow. We have lost track of all the daughters and grand-daughters of Serena. We know the satisfied customers from us at Clearwater and know Trennepohl has a big list as well. King Cattle Co, purchased our half of Serena and they are off and running with her production. Cool Cat's dam, a Loaded Up is doing her job and more. This February show stopper is the best daughter of Serena to be born at Milan. We sold 10 daughters in last year's female sale with the top being 7200. We never try to get ahead of our selves but Cool Cat at whatever the price will add genetic merit and return. The cat is out of the bag. J74E is homo polled and homo black. Have fun with this one.

CE	BW	WW	YW	MCE	Milk	MWW	Marb	REA	API
7.7	3.4	74.6	100.1	3.1	21.9	59.1	0.21	1.02	118.2

Free Showman Clinic & Meal

"Best practices for your show calf" presentation for youth the evening before the sale, **Friday, October 22nd at 6:00 pm.** Topics will include daily care, feed, and showmanship. Join us for pizza and door prizes throughout the evening. **RSVP to 217-722-0787 or email MMyerscough@landolakes.com**

4A

CLEAR WATER SIMMENTALS

CLRWR Serena H74H

BD. 1/16/20 • ASA#. 3809474 • Purebred Bred Heifer
Tattoo. H74H • Adj. BW. 68 lbs.

LLSF UPRISING Z925

sire HILB ORACLE C033R

SS BABYS BREATH P035

W/C LOADED UP 1119Y

dam CLRWR SERENA D74R

HF SERENA

CE	BW	WW	YW	MCE	Milk	MWW	Marb	REA	API
8.6	1.4	67.5	94.2	4.7	22.8	56.5	0.09	0.93	118.4

AI'd to TJ Rage (ASA# 3762954) on 4/17/21, PE to TJ Rage (ASA# 3762954) from 4/30/21 to 8/14/21

Here is another top notch Oracle x Serena that is a standout. You can see why Oracle was the high seller at the Badger Creek sale; by the way he is doing a great job for the Fenton family and many others across the country as all aware. H74H is sharp front with loads of femininity and presence. To add to the package she puts it all together with length, body and very adequate thickness. She is a good and we will be keeping up with her success in the new owners program. Plus this Serena daughter is bred to TJ Rage. H74H is homo polled and homo black and her calf will be as well.



4B

CLEAR WATER SIMMENTALS

CLRWR Serena H74M

BD. 2/3/20 • ASA#. 3809457 • Purebred Bred Heifer
Tattoo. H74M • Adj. BW. 112 lbs.

LLSF UPRISING Z925

sire HILB ORACLE C033R

SS BABYS BREATH P035

W/C LOADED UP 1119Y

dam CLRWR SERENA D74R

HF SERENA

CE	BW	WW	YW	MCE	Milk	MWW	Marb	REA	API
8.6	2.7	81.7	114.3	4.7	22.8	63.6	0.09	1.04	121.5

AI'd to WHF/JS/CCS Double Up (ASA# 3658592) on 3/23/21. Likely safe to AI, PE to TJ Rage (ASA# 3762954) from 4/30/21 to 8/14/21

The Loaded Up x Serena D74R is doing an excellent job, the results are seen by the open Cool Cat and the several Oracle daughters and here is another one H74M. This bred is a replica of her sisters however exhibits more bone, thickness and overall power. You can't go wrong adding these types of breds to your herd. H74M is bred to the Cattleman's Congress Reserve Grand bull, Double Up for nothing good result. H74M is homo polled and homo black.



5

JORDON SIMMENTALS

CLRWR J2 Breez F74P

BD. 3/2/18 • ASA#. 3452657 • Purebred Bred Cow
Tattoo. F74P • Adj. BW. 100 lbs.

HEADS UP 20X ET

sire LLSF UPRISING Z925

LLSF UNTOUCHABLE U925

LLSF PAYS TO BELIEVE ZU194

dam CLRWR SERENA C74L

HF SERENA

CE	BW	WW	YW	MCE	Milk	MWW	Marb	REA	API
6.5	4.3	88.0	136.5	3.0	19.9	63.9	0.10	0.90	108.9

AI'd to W/C Relentless 2049F (ASA# 3499487) on 1/27/21

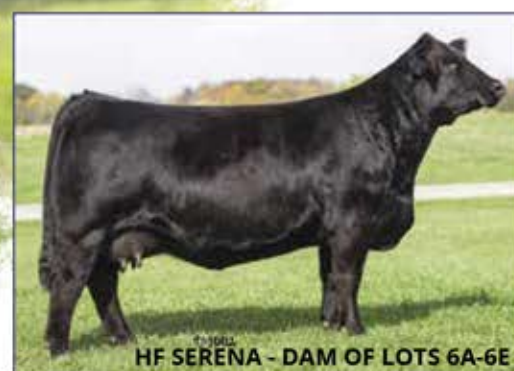
Back in 2018 we offered choice of 2 Breez x Uprising daughters. One went to our friends at Walther's Simmentals, we kept the other one. I love the Breez x Uprising mating. I understand most might not recognize the bull F74P is bred to, but they should. He is a \$30,000 Relentless son that Art Farley selected out of the Werning program. Art calls him "Structure" After seeing Arts group of calves out of him, I bred all of our Uprising daughters that way. The mating works. The buyer here might want to hurry home...this one will calve shortly after the sale.





Lot 6A

Haefner



HF SERENA - DAM OF LOTS 6A-6E

Serena Daughters



Lot 6B



CLRWTR Serena J74A

BD. 1/5/21 • ASA#. 3928502 • Purebred Open Heifer
Tattoo. J74A • Adj. BW. 78 lbs.

CNS PAYS TO DREAM T759
sire SC PAY THE PRICE C11
LLSF URABABYDOLL U194
MR NLC UPGRADE U8676
dam HF SERENA
MISS KNOCKOUT 74T

CE	BW	WW	YW	MCE	Milk	MWW	Marb	REA	API
6.1	3.6	81.7	118.4	2.2	23.0	63.8	0.16	0.98	115.1

All the daughters of Serena have small differences depending of the sire and such however by looking at the family members; consistency is a strong and valuable trait. J74A has very few holes being three dimensional, deep, wide with good length of body. The shape and attractiveness is combined in J74A. Pays The Price worked well and that is what we expected to happen. The results will be good with these two combined families. We know the quality of females being shown today is mind blowing however J74A can hold her own and afterwards the reward will be even better. J74A is homozygous black.



CLRWTR Serena H74F

BD. 1/9/20 • ASA#. 3809460 • Purebred Bred Heifer
Tattoo. H74F • Adj. BW. 105 lbs.

YARDLEY UTAH Y361
sire W/C RELENTLESS 32C
MISS WERNING KP 8543U
MR NLC UPGRADE U8676
dam HF SERENA
MISS KNOCKOUT 74T

CE	BW	WW	YW	MCE	Milk	MWW	Marb	REA	API
6.9	4.5	84.6	117.1	1.8	22.4	64.6	0.19	0.95	114.6

AI'd to W/S Proclamation (ASA# 3254156) on 4/14/21, PE to TJ Rage (ASA# 3762954) from 4/30/21 to 8/14/21
Serena H74F is Becca's favorite of the bred heifers. H74F is deep flanked with rib shape and overall volume. H74F has a sound structure to stay in the herd for many years, we AI'd her to add in the Sugar cow with the strong combination of Serena. The vet called her too close to call. Serena H74F is homo black. She could be the dam of your next herd bull.



CLEAR WATER SIMMENTALS

CLRWTR Serena H74LBD. 2/1/20 • ASA#. 3809472 • Purebred Bred Heifer
Tattoo. H74L • Adj. BW. 94 lbs.

LLSF UPRISING Z925

sire **HILB ORACLE C033R**

SS BABYS BREATH P035

MR NLC UPGRADE U8676

dam **HF SERENA**

MISS KNOCKOUT 74T

CE	BW	WW	YW	MCE	Milk	MWW	Marb	REA	API
6.7	3.8	83.7	120.1	2.6	23.3	65.1	0.07	0.87	113.3

Natural Service on 5/12/21 to TJ Rage (ASA# 3762954). PE to TJ Rage (ASA# 3762954) from 4/30/21 to 8/14/21

Here is Jeff's favorite and he will be glad to point her out on sale day however she will be easy to find. This baldie Oracle is a stout and powerful female with more performance and bone. H74L is long necked, striking and overall complete in a balanced package. Serena H74L is in the top 25% for WW and the 35% for YW. We are excited about TJ Rage and how will benefit our program so look forward to her calf. H74L is homozygous black and calf will be as well.



CLEAR WATER SIMMENTALS

CLRWTR Serena H74KBD. 1/29/20 • ASA#. 3809486 • Purebred Bred Heifer
Tattoo. H74K • Adj. BW. 90 lbs.

LLSF UPRISING Z925

sire **HILB ORACLE C033R**

SS BABYS BREATH P035

MR NLC UPGRADE U8676

dam **HF SERENA**

MISS KNOCKOUT 74T

CE	BW	WW	YW	MCE	Milk	MWW	Marb	REA	API
6.7	4.1	86.5	124.2	2.6	23.3	66.5	0.07	0.93	113.9

Natural Service on 5/6/21 to TJ Rage. PE to TJ Rage (ASA 3762954) from 4/30/21 to 8/14/21

H74K is another baldie Oracle female that will be a money maker like all the family members. The Serena daughter and granddaughters are being a benefit to many operations. This female will calve in the spring to TJ Rage that will be a great calving ease herd sire being in the top 5% for CE, top 10% for WW, top 15% for YW and the top 1% for MM, Stay, and API. He posts 173 for API. H74K is homo black.



CLEAR WATER SIMMENTALS

CLRWTR Serena H74TBD. 2/8/20 • ASA#. 3809428 • Purebred Bred Heifer
Tattoo. H74T • Adj. BW. 100 lbs.

W/C EXECUTIVE ORDER 8543B

sire **OBCC CMFM DEPLORABULL D148**

LAZYH/ADKINS BLKSTAR Z15

MR NLC UPGRADE U8676

dam **HF SERENA**

MISS KNOCKOUT 74T

CE	BW	WW	YW	MCE	Milk	MWW	Marb	REA	API
9.8	1.9	82.6	124.6	3.8	26.0	67.2	0.07	0.93	121.0

A'd to WHF/JS/CCS Double Up (ASA# 3658592) on 4/26/21, TJ Rage (ASA# 3762954) from 4/30/21 to 8/14/21. Too close to call.

This Deplorabull daughter sets the bar high with her overall balance and style. H74T exhibits a great rear leg with bone and good foot shape plus added in is her hip structure, depth of body, extended front end and the look of a winner. I know this is one we would like to retain and keep around for many years however we are committed to offering our best. Serena has been good to us and she will continue to influence our program plus our three sales. H74Y is homo black. Pay attention on this one come sale day.



Miss Knockout 74T Daughters

Lot 7A

Lot 7B

BESHEARS SIMMENTALS

7A

HF BESH *Ms Knockout* 311J

BD. 3/11/21 • ASA#. 3930796 • Purebred Open Heifer
Tattoo. 311J • Adj. BW. 94 lbs.

HTP/SVF DURACELL T52
sire GSC GCCO DEW NORTH 102C
WELSH'S SCARLET 161Z
SS GOLDMINE L42
dam MISS KNOCKOUT 74T
SLOW POKE 74R

CE	BW	WW	YW	MCE	Milk	MWW	Marb	REA	API
10.1	2.3	77.7	109.4	4.9	22.1	60.9	-0.06	0.86	106.4

Knockout 311J is an attractive baldie that is one of the younger ones however I feel has loads of potential. This March show prospect is stout boned, with a wide hip and top with body and shape overall. 311J is sired by the past North American champion, Dew North which adds in another proven cow family.

BESHEARS SIMMENTALS

7B

HF BESH *Ms Knockout* 302J

BD. 4/2/21 • ASA#. 3930793 • Purebred Open Heifer
Tattoo. 302J • Adj. BW. 80 lbs.

HPF QUANTUM LEAP Z952
sire WLE COPACETIC E02
CMFM JOY 022B
SS GOLDMINE L42
dam MISS KNOCKOUT 74T
SLOW POKE 74R

CE	BW	WW	YW	MCE	Milk	MWW	Marb	REA	API
9.8	2.9	76.0	113.5	4.4	24.4	62.4	-0.02	0.76	109.7

You can see why Copacetic progeny is so popular. 302J is stylish, complete and well designed in her overall make up. This younger April is some hip, top and rear end. Knockout has produced many show winners and this could be another to add to the list. No matter what the future hold for 302J she will be a family that adds genetic merit and profit.

8

BESH Ms Knockout JG14BD. 4/1/21 • ASA#. 3930231 • 1/2 Simmental Open Heifer
Tattoo. JG14 • Adj. BW. 104 lbs.

HTP/SVF DURACELL T52

sire **GSC GCCO DEW NORTH 102C**

WELSH'S SCARLET 161Z

JASS ON THE MARK 69D

dam **BESH MS KNOCKOUT GA14**

MISS KNOCKOUT 74T



CE	BW	WW	YW	MCE	Milk	MWW	Marb	REA	API
11.3	2.2	81.2	114.5	5.8	21.2	61.7	-0.03	0.96	115.0

JG14 is high on Dads list of favorites and many others as well. This grand-daughter of Knockout has all the right pieces to get anyone attention. JG14 adds elegance and style to the first degree. We all know in the Simmental business the bar has gotten higher and that is a great thing in the position of our breed and the acceptance in all parts and segments in the cattle industry. We hope JG14 wins some purple for her new owner however it's not question about her bright future.

9

BESH Ms Slow Poke JF337BD. 2/15/21 • ASA#. 3930218 • Purebred Open Heifer
Tattoo. JF337 • Adj. BW. 77 lbs.

MR CCF VISION

sire **MR CCF 20-20**

HTP SVF DEW THE STROKE

TRIPLE C BETTER BUILT L2

dam **SLOW POKE 74R**

DRAKE SLOW POKE



CE	BW	WW	YW	MCE	Milk	MWW	Marb	REA	API
9.3	3.4	76.7	114.4	4.4	12.8	51.1	0.05	0.88	116.3

JF 337 is a half sister to Knockout sired by 20/20. Just think all the progeny out of Slow Poke (18) and Knockout (212). This family has done great things for Hobbs, Hudson Pines, Jones Cattle Co. 102 Cattle and many more. This 20 20 could be at the top of the list. JF 337 has a neat made, complete design and has a future as a show stopper and future breeding piece.



THE CLEAR CHOICE

Upcoming Sales

BULL SALE
SATURDAY, MARCH 26, 2022
1:00 PM EST • MILAN, IN
CUSTOMER SALE
SATURDAY, APRIL 20, 2022
1:00 PM EST • MILAN, IN



Lot 10

AI'd to CLRS Guardian 317G (ASA# 3563436) on 3/22/21, confirmed bred

Here is one that is really hard to pass by and over look in any setting. Love Spell has been a successful donor in our program and will continue for sure. Love Spell is a female producer and has only had a couple bulls. Love Spell is a full-sister to the champion, Crazy In Love (108) and is backed by the proven Breath Taker (166). The reason for these numbers is the fact of proven, predictable, with breed leading results. A27K is stout and powerful and is maternal as well. With the elite bulls in the Simmental business the new owner will be able to continue down the same path. We hate to see her go. The last time we flushed A27K she produced 8 embryos.

10

BESHEARS & CASEY & COURTNEY DICKERSON

HILB Love Spell A27K

BD. 3/4/13 • ASA#. 2764812 • Purebred Bred Cow
Tattoo. A27K • Adj. BW. 86 lbs.

SVF STEEL FORCE S701

sire MR HOC BROKER

JM BF H25

SS GOLDMINE L42

dam SS BABYS BREATH P035

SVF BREATH TAKER J130

CE	BW	WW	YW	MCE	Milk	MWW	Marb	REA	API
9.4	2.6	65.5	80.5	4.6	20.2	52.9	-0.12	0.57	97.9



Lot 11

11

BESHEARS SIMMENTALS

RUMPLE Happy Marda

BD. 3/19/20 • ASA#. 3844868 • 1/2 Simmental Bred Heifer
Tattoo. H12Z • Adj. BW. 65 lbs.

CONNEALY BLACK GRANITE

sire MARDA BLACKSMITH 683

S A V BLACKCAP MAY 3092

BESH HAPPY TIME D910

dam RUMPLE BABYS BREATH F12Z

JMCB BABYS BREATH 12Z

CE	BW	WW	YW	MCE	Milk	MWW	Marb	REA	API
11.5	1.0	79.0	122.3	6.6	21.5	60.9	0.13	0.67	115.1

AI'd to Tehama Tahoe B767 (ASA# 3396482) sexed female semen on 3/31/21, confirmed bred

H12Z is a great granddaughter of the proven Babys Breath. This is a Sim Angus that smooth made and neat shoulder with a long and extended front one third. H12Z has many plus attributes as an individual.

JS Southern Belle



LCDR Intrigue 749E - Service Sire of Lot 12



Daughter



Daughter

12

JS Southern Belle 5B

CLEAR WATER SIMMENTALS

BD. 2/6/14 • ASA# 2865418 • Purebred Donor
Tattoo. 5B • Adj. BW. 82 lbs.

SVF STEEL FORCE S701

sire MR HOC BROKER

JM BF H25

JS BURNING UP 33R

dam JS FLATOUT FLIRTY 46T

JS SHES SO FINE 14P

AI'd to LCDR Intrigue (ASA# 2865418) on 6/3/21

Southern Belle is a proven and her dam, Flatout Flirty as well. Just try to recall all the progeny and what they accomplished for JS, Griswold, Loschen, Baty Livestock, Campbell Cattle and many other breeders large and small. Southern Belle has proven herself producing several bulls for our bull sale and in the 2018 we sold three daughters, one for \$5,800 to Chole Boinott, Brandon Luebue at \$3,500 and Veshlage for \$4,000. In the 2019 sale a 20-20 daughter sold for \$10,500 to Hadden Simmentals. The proof is there. Belles is bred to the Bichler/Lazy C Diamond herd sire LCDR Intrigue. Proven donor, buy with confidence.

CE	BW	WW	YW	MCE	Milk	MWW	Marb	REA	API
8.4	3.2	62.9	88.6	5.1	21.9	53.3	-0.14	0.72	91.6

KRI Minnie



Lot 13

13

KRI Minnie

BESHEARS SIMMENTALS

AI'd to RP/BCR Eminence H005 (ASA# 3701500) on 5/3/21,
confirmed bred

Minnie is named incorrectly because nothing is mini about this individual. Yes, we should have flushed this cow because she is very deserving. Minnie is a beast with all the power, based width, internal dimension and overall completeness. Minnie is in the top 20% for WW and YW.

BD. 3/10/16 • ASA#. 3187523 • Purebred Bred Cow
Tattoo. D1

W/C UNITED 956Y
sire W/C EXECUTIVE ORDER 8543B
MISS WERNING KP 8543U
W/C WIDE TRACK 694Y
dam BESH MS BELLE B2117
JF LATISHA 2117Z

CE	BW	WW	YW	MCE	Milk	MWW	Marb	REA	API
11.3	1.8	85.3	128.7	3.7	21.7	64.3	0.14	0.88	123.4



Golden Book award members
Parke and Nina Veshlage



E/T *Alexus*



Lot 14



Tehama Blackcap N577 - Dam of Lot 14

14

E/T *Alexus* 368A

BD. 10/13/13 • ASA# 2830205 • 1/2 Simmental Donor
Tattoo. 368A • Adj. BW. 76 lbs.

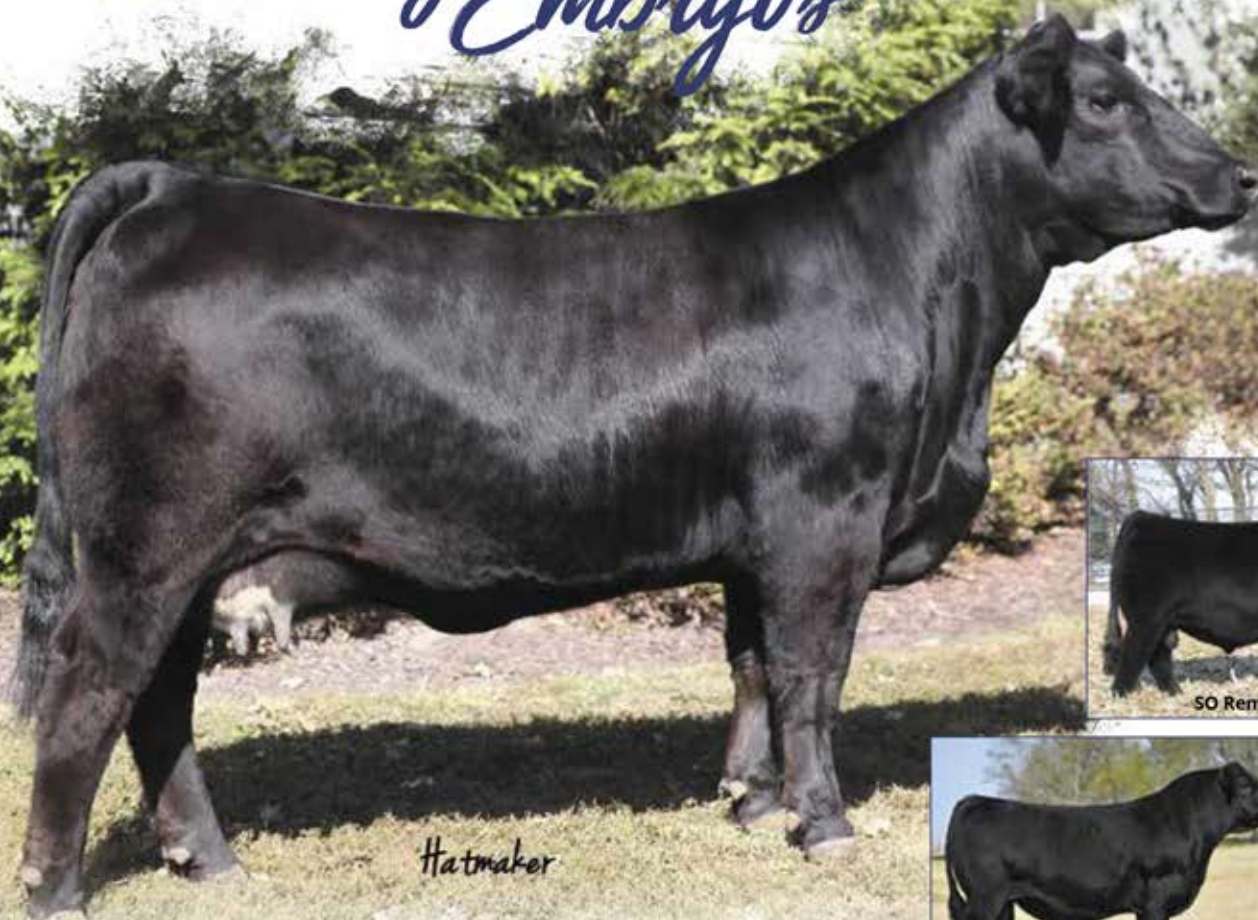
ELLINGSON LEGACY M229
sire MR NLC UPGRADE U8676
MS NLC MOJO S6119 B
BON VIEW NEW DESIGN 878
dam TEHAMA BLACKCAP N577
TEHAMA BLACKCAP L145

CE	BW	WW	YW	MCE	Milk	MWW	Marb	REA	API
11.6	1.6	86.3	135.5	5.4	17.0	60.1	0.25	0.70	128.6

AI'd to CLRS Guardian 317G (ASA# 3563436) on 2/23/21, confirmed bred

Alexus is arguably the best built female on our farm. She hung many banners for the Chastian family before she arrived here in 2018. So, it is no surprise she consistently produces great progeny. We are overly excited to see more progeny out of this donor and equally excited to see what the future holds for the retained females in our herd. We have been fortunate to have a cow that flushes extremely well every time we work her. We know she had an excellent show career and has always been in great shape, but you would be hard pressed to find a female in any better shape than this one, even after weaning one of our best bull calves off this spring. If you are looking for a great producer that you can stick in your front pen, look no further. This cow will work for you. Alexis flushes well and the last two times she has produced 15 and 16 good embryos.

SS Emberly Embryos



Hatmaker



SO Remedy 7F - Lot 15A Sire



ES Right Time FA110-4 - Lot 15B Sire

Emberly is a past show heifer and a young donor. Emberly did well in the show ring winning many ribbons and banners. After showing and went into the donor pen she calved with an excellent udder and nice heifer at side. As a donor we have flushed several ways and we feel the mating offered will be among the elite. The opportunity is the Cattleman's Congress champion, SO Remedy and Feelings, ES Right Time. We can only make suggestions and we say buy all six. This Insight out of Magnetic Lady will be a promise keeper. Selling 3 IVF embryos with a guarantee on 1 on 3 embryos and 3 pregnancies if take 6 embryos.

CLEAR WATER SIMMENTALS/HTP SIMMENTALS

15A

SS Emberly E303 x SO Remedy

BD. 10/12/17 • ASA#. 3386923 • Embryos
Tattoo. E303 • Adj. BW. 86 lbs.

HPF/HILL UPRISING C104

sire **SO REMEDY 7F**

B&K CREAM SODA 8D

PVF INSIGHT 0129

dam **SS EMBERLY E303**

SVF NJC MAGNETIC LDY M25

Planned Mating, Projected EPDs

CE	BW	WW	YW	MCE	Milk	MWW	Marb	REA	API
10.3	1.8	79.2	118.6	5.5	24.0	63.5	-0.08	1.02	106.0

Selling 3, IVF sexed heifer embryos.

CLEAR WATER SIMMENTALS/HTP SIMMENTALS

15B

SS Emberly E303 x ES Right Time

BD. 10/12/17 • ASA#. 3386923 • Embryos
Tattoo. E303 • Adj. BW. 86 lbs.

WELSHS DEW IT RIGHT067T

sire **ES RIGHT TIME FA110-4**

ES A110

PVF INSIGHT 0129

dam **SS EMBERLY E303**

SVF NJC MAGNETIC LDY M25

Planned Mating, Projected EPDs

CE	BW	WW	YW	MCE	Milk	MWW	Marb	REA	API
8.4	2.6	84.3	126.0	3.5	24.0	66.1	-0.10	0.94	119.0

Selling 3, IVF un-sexed embryos.

Open Heifers

16

CLEAR WATER SIMMENTALS

CLRWTR *Luvable* J422B

BD. 1/4/21 • ASA#. 3928504 • Purebred Open Heifer
Tattoo. J422B • Adj. BW. 94 lbs.

CCR ANCHOR 9071B
sire **LLSF VANTAGE POINT F398**
HPF RITE 2 LUV 398D
JF MILESTONE 999W
dam **HPF LOTS LOVE B422**
RP/MP RIGHT TO LOVE 015U

CE	BW	WW	YW	MCE	Milk	MWW	Marb	REA	API
13.2	0.0	72.6	106.4	7.9	20.3	56.5	0.30	0.71	134.7

Luvable is a daughter of the 2019 high seller at 22,000 on Lots of Love going to KD Simmentals and Shy 5. A half sister to J422B sold for 22,000 going to Barrett Branch and Lots of Love half sister, Right to Love Z338 sold for \$22,000 to Hill-top and Sloup. This exceptional cow family started many years ago producing elite offspring that commanding top dollars. Luvable is on the right path started at birth and continues down the same road. J422B is favorite with onlookers and gets exceptional comments. I hope you can attend and decide for yourself the direction this Vantage Point x Lots Of Love can take your program. Whether you are showing or just waiting for her to be a donor I know she has the quality and ability bred in to excel.



Haefner

Lot 16

17

CLEAR WATER SIMMENTALS

CLRWTR *Whisper* J882

BD. 1/11/21 • ASA#. 3928510 • 3/4 Simmental Open Heifer
Tattoo. J882 • Adj. BW. 76 lbs.

MR CCF VISION
sire **MR CCF 20-20**
HTP SVF DEW THE STROKE
W/C EXECUTIVE ORDER 8543B
dam **ELLINGSON MS EXEC F882**
ELLINGSON MS NEXUS D600

CE	BW	WW	YW	MCE	Milk	MWW	Marb	REA	API
14.6	-0.7	81.9	122.1	6.9	14.6	55.5	0.05	1.05	129.1

This baldie is not a Whisper she is loud and clear. That is a quote from a recent visitor. J882 is a striking, long fronted, eye appealing, complete and sound individual. Whisper's dam we purchased from Terry Ellingson in N.D. Her dam going back to Nexus and is doing a great efficient job. J882 comes to the front and will meet your expectations as a show heifer, bred heifer plus soon to be a donor if that fits your program. J882 is in the top 4% for REA and in the top 25% for CE, BW and WW. Whisper is homo polled.



Haefner

Lot 17

18

CLEAR WATER SIMMENTALS

CLRWTR *Perfect Reflection*

BD. 1/17/21 • ASA#. 3928503 • Purebred Open Heifer
Tattoo. J217 • Adj. BW. 102 lbs.

YARDLEY UTAH Y361
sire **W/C RELENTLESS 32C**
MISS WERNING KP 8543U
WS ALL-AROUND Z35
dam **MMF REFLECTIONS E217**
KRIZ/SVF REFLECTIONS

CE	BW	WW	YW	MCE	Milk	MWW	Marb	REA	API
10.4	2.8	80.8	115.0	5.4	23.9	64.2	0.15	0.86	123.7

Reflection J217 is grace, style, with a whopping overall design that includes her wow factor package. If you don't recognize this family is derived from an exceptional cow bred by Cow Camp, CCR Reflections Time 7006T. We feel this female with her quality and overall complete design will be heifer to be shown across the country. Relentless really clicked with this All Around cow. This fancy heifer is very similar to the Lot 2D Relentless heifer that sold last year and went to Scott Riddell for \$5,100. J217 has good EPDs and in the top 20% WW and top 30% YW. Reflection is homo polled.



Haefner

Lot 18



19

CLRWTR *Sheza Bonnie* J61

BD. 2/7/21 • ASA#. 3928508 • Purebred Open Heifer
Tattoo. J61 • Adj. BW. 88 lbs.

YARDLEY UTAH Y361

sire **W/C RELENTLESS 32C**

MISS WERNING KP 8543U

MR CCF VISION

dam **CLRWTR SHEZA BONNIE B61A**

MISS CCF SHEZA BONNIEY61

CE	BW	WW	YW	MCE	Milk	MWW	Marb	REA	API
9.9	1.8	71.2	98.6	2.7	19.9	55.4	0.12	0.85	111.6

I think most breeders and even junior members are aware of the success of the C & C program and the donor Sheza Bonnie. Bonnie is past champion at the North American however since then many progeny have claimed banners across the country. The family is deeply rooted as evident of the outstanding track record. We are extremely proud of our opens and feel this is the best set from top to bottom. We can't predict the future however we can continue to stack the elite and proven cow families and watch them and their success. This February open has the potential and overall quality to have success today and on in future. J61 is one of the top opens. She deserves your attention and consideration.



20

CLRWTR *Mina* J50

BD. 2/11/21 • ASA#. 3928511 • 3/4 Simmental Open Heifer
Tattoo. J50 • Adj. BW. 89 lbs.

YARDLEY UTAH Y361

sire **W/C RELENTLESS 32C**

MISS WERNING KP 8543U

PRS BLAZIN HOT W192

dam **RHODES MINA Y50**

RHODES MINA 347

CE	BW	WW	YW	MCE	Milk	MWW	Marb	REA	API
10.9	1.6	66.8	90.3	5.8	17.3	50.6	0.26	0.53	113.0

Rhodes Mina Y50 is a cow that we purchased from Hilltop. I have heard from several people that the Rhodes cow s is great producers. J50 is the results of Relentless and Blazin Hot. Again we proud of our opens and we feel J50 is the freakiest fronted one in the offering which also displays soundness, length of body along with first class look. J50 is homo polled. Just visualize how she will look as a bred.

21

BESH *Ms Soda* JFM1

BD. 3/1/21 • ASA#. 3930201 • Purebred Open Heifer
Tattoo. JFM1 • Adj. BW. 81 lbs.

MR TR HAMMER 308A ET

sire **TJSC HAMMER TIME 35D**

TJSC SO SWEET 104X

MR CCF 20-20

dam **BESH MS SODA FAM1**

HPF CREAM SODA B334

CE	BW	WW	YW	MCE	Milk	MWW	Marb	REA	API
11.2	2.2	77.6	114.8	3.5	14.7	53.5	0.06	0.90	119.5

Soda is one you can spot from far away however when you get closer you will find here is one that deserves a second look. This March heifer was born with a birth mark. Soda not only attracts attention the quality is superb. Hammer Time and Cream Soda produced bone, based width, muscle, capacity in neat package. The genetics of Cream Soda and Shes So Sweet has been among the top and it is correct the cow makes the difference. After her show career put Soda in the front pasture.



Open Heifers

22

BESH *Ms Fire* JA29

BD. 3/4/21 • ASA#. 3930204 • Purebred Open Heifer
Tattoo. JA29 • Adj. BW. 93 lbs.

MR TR HAMMER 308A ET
sire TJSC HAMMER TIME 35D
TJSC SO SWEET 104X
BESHEARS TRUE MANT7
dam BESH MS HUMM AX29
BESH MS UNANIMOUS X29

CE	BW	WW	YW	MCE	Milk	MWW	Marb	REA	API
8.3	3.3	74.4	114.6	3.2	20.4	57.5	0.09	0.80	113.7

My Dad always tried to teach me about fire. Well, most of the time I listened to his wisdom. Ms Fire should get you fire up about a red one. JA29 not only attracts you by her dark red color, she exhibits muscle, stoutness, power and body all in neat and orderly fashion. This Hammer Time should be on your short list even before you arrive in Milan. JA29 goes back to the Wheatland Lady 614S.



Lot 22

Congratulations Carly Thomas on your many time champion purchased in last year's sale!
Maternal Sib to Lot 22



Lot 23A

Lot 23B

23A

BESH HF *Ms Firefly* JN96

BD. 2/4/21 • ASA#. 3930205 • 1/2 Simmental Open Heifer
Tattoo. JN96 • Adj. BW. 79 lbs.

In 2016 we purchased the second high selling female at Hudson Pines Farms with our good friends at Hobbs Farms. To make a long story short HPF/PCCC Butterfly 316D was meant to be our next great donor. As all of you know things do not always work out as planned and 316D is not with us anymore. These two beauties are the only 2 females we had out of 316D and quite possibly, with one embryo left in the tank, the only 2 there will be. I will be the first to admit that they are vastly different, but the quality is there on both. JN96 is just an absolute truck, big boned, huge footed, wide topped and explosive when you get behind her. JA14 whale bellied, Level topped, smooth jointed, and elegant out of her neck. The decision is yours you pick out the one you like the best and send the other home with us to make a donor.

BESHEARS SIMMENTALS

23B

BESH HF *Ms Firefly* JA14

BD. 1/30/21 • ASA#. 3930214 • 1/2 Simmental Open Heifer
Tattoo. JA14 • Adj. BW. 96 lbs.

PVF INSIGHT 0129
sire PVF BLACKLIST 7077
PVF BACKBIRD 3070
HOOK'S BROADWAY 11B
dam HPF/PCCC BUTTERFLY 316D
HILB/RUBY BUTTERFLY B555

Projected EPDs

CE	BW	WW	YW	MCE	Milk	MWW	Marb	REA	API
7.7	2.9	84.7	131.4	2.6	18.0	60.3	0.26	0.89	117.9

Open Heifers



24

CLRWTR Lady Luck J5105A

BD. 1/2/21 • ASA#. 3928506 • Purebred Open Heifer
Tattoo. J5105A • Adj. BW. 90 lbs.

YARDLEY UTAH Y361

sire **W/C RELENTLESS 32C**

MISS WERNING KP 8543U

CCR COWBOY CUT 5048Z

dam **CLRWTR LADY LUCK E5105A**

CLRWTR LADY LUCK B5105A

CE	BW	WW	YW	MCE	Milk	MWW	Marb	REA	API
10.1	3.4	92.8	129.4	4.4	24.7	71.1	0.16	0.93	128.6

I feel this heifer is very typical of the Lady Luck, Joys Shade, 5105R. 5105R is the main base and instrumental cow in our program. The first daughter out of 5105R is born in 2007. JF Ebonys Joy 5105R has 103 on her cow card. In all our past sales over this time period this family has played a big part. This sale we have 10 family members. This outstanding Relentless female is 4 generations removed from 5105R. This Relentless heifer is typical, all them whether sold as bred or open are outstanding plus the customer satisfaction is great and breeders ask they want to own a family member. This female is carved out of a mold being the right type and kind. We hope and know she will find many friends on sale. A female posts good EPDs being in the 3% on WW and top 15% on YW. Homo polled



25A

CLRWTR Lady Luck J5105H

BD. 1/17/21 • ASA#. 3928509 • 3/4 Simmental Open Heifer
Tattoo. J5105H • Adj. BW. 82 lbs.

YARDLEY UTAH Y361

sire **W/C RELENTLESS 32C**

MISS WERNING KP 8543U

S A V BISMARCK 5682

dam **CLRWTR LADY LUCK Y5105E**

CLRWTR JOYS SHADES

CE	BW	WW	YW	MCE	Milk	MWW	Marb	REA	API
12.8	0.8	72.1	100.5	6.5	22.6	58.6	0.11	0.78	115.0

J5105H is another family member being a Relentless xBismarck. This January born is stout boned, wide topped with muscle and substance. This heifer exhibits the right parts to be outstanding bred and future cow. I could say more but study the 10 family members. This female is homo polled and homo black.



25B

CLRWTR Lady Luck J5105J

BD. 2/1/21 • ASA#. 3928507 • 3/4 Simmental Open Heifer
Tattoo. J5105J • Adj. BW. 74 lbs.

CCR COWBOY CUT 5048Z

sire **WS PROCLAMATION E202**

WS MISS SUGAR C4

S A V BISMARCK 5682

dam **CLRWTR LADY LUCK Y5105E**

CLRWTR JOYS SHADES

CE	BW	WW	YW	MCE	Milk	MWW	Marb	REA	API
16.2	-2.4	75.5	111.8	11.1	29.2	66.8	0.27	0.76	143.8

Lady Luck does it again. This Proclamation heifer puts a lot of the pieces together being stout, deep, thick and wide. On paper this female has 5 EPDs in the top 15% or better. We like the progeny out of Proclamation and will have more out of the Sugar sons in the future. J5105 is definitely has some muscle, shape and power. Don't forget this homo polled and homo female will raise a great bull in her future.

HPF Missy Daughters



Lot 26A



HPF Missy C068 - Dam of Lots 26A-26C



Lot 26C



Lot 26B

We believe in cow families and here is another dependable line. The 770P cow line all the Missy are in production in large and small Simmental programs plus in all kinds of environments across the county. I have not heard of one person that didn't recognize this family as a money maker. The genetic merit is passed on by each generation. The different sires all worked and slight differences. They all look like family members. The two Vantage Points will grab your attention for sure. The Distinction is the stoutest. The JG68 is a granddaughter of C068. If you want a cow herd and market bulls and females stick with the reliable cow families. If you're a young breeder just getting in the Simmental business, I would load them all, it is a Clear Choice.

26A

BESH *Ms Missy* JBCR

BD. 3/4/21 • ASA#. 3930216 • Purebred Open Heifer
Tattoo. JBCR • Adj. BW. 83 lbs.

BESHEARS SIMMENTALS

26B

BESH *Ms Missy* JF35

BD. 4/28/21 • ASA#. 3930217 • Purebred Open Heifer
Tattoo. JF35 • Adj. BW. 59 lbs.

BESHEARS SIMMENTALS

sire CCR ANCHOR 9071B
LLSF VANTAGE POINT F398
HPF RITE 2 LUV 398D
RGRS SRG TWO STEP 20Z ET
dam **HPF MISSY C068**
WLE MISSY U409

26C

BESH *Ms Missy* HY37

BD. 4/7/20 • ASA#. 3765638 • Purebred Bred Heifer
Tattoo. HY37 • Adj. BW. 86 lbs.

BESHEARS SIMMENTALS

sire MR TR HAMMER 308A ET
HARA'S DISTINCTION 10C
HARA'S MISS PLATNIUM
RGRS SRG TWO STEP 20Z ET
dam **HPF MISSY C068**
WLE MISSY U409

CE	BW	WW	YW	MCE	Milk	MWW	Marb	REA	API
8.6	3.5	79.3	110.8	2.6	16.8	56.4	0.08	0.68	106.8

AI'd to Tehama Tahoe B767 (ASA# 3396482) sexed female semen on 3/15/21, confirmed bred

HPF Missy C068 Granddaughter sells as Lot 27, Next Page >>

CE	BW	WW	YW	MCE	Milk	MWW	Marb	REA	API
11.3	2.2	80.9	114.6	5.0	19.3	59.7	0.31	0.72	129.7



Open Heifer

BESHEARS SIMMENTALS

27

BESH Ms Missy JG68

BD. 3/3/21 • ASA#. 3930241 • 1/2 Simmental Open Heifer
Tattoo. JG68 • Adj. BW. 90 lbs.

TEHAMA UPWARD Y238

sire **TEHAMA TAHOE B767**

TEHAMA MARY BLACKBIRD Y684

BESH BULL 739W

dam **BESH MS MISSY G068**

HPF MISSY C068

CE	BW	WW	YW	MCE	Milk	MWW	Marb	REA	API
12.1	1.3	85.6	129.8	5.5	22.4	65.1	0.50	0.73	141.4

Another head-turning C068 family member. We are big fans of the Tehama Tahoe progeny and it's easy to see why. Don't forget to take a look at the strong stats that back up JG68, she'll be easy to find on sale day.

J2 Ms Diva Daughters



28

BESH Ms Diva H902

BD. 4/6/20 • ASA#. 3765639 • 1/2 Simmental Bred Heifer
Tattoo. H902 • Adj. BW. 73 lbs.

DAMERON FIRST CLASS

sire **EXAR CLASSEN 1422B**

EXAR PRINCESS 2006

CNS DREAM ON L186

dam **J2 MS. DIVAT04**

ET MS GIRL 52M

CE	BW	WW	YW	MCE	Milk	MWW	Marb	REA	API
8.0	2.2	80.4	115.1	5.2	21.9	62.1	0.35	0.63	118.6

Bred on 4/1 to CLRS Guardian 317G (ASA# 3563436) confirmed bred
Diva has been in our program for several years and she is good producer.
These two are half sisters, one a purebred and the other a Sim Angus. In the 2019 sale daughters were purchased by Josh Archer and Steve Louge.



29

BESH Ms Doll C011

BD. 2/7/15 • ASA#. 2991741 • Purebred Bred Cow
Tattoo. C011 • Adj. BW. 76 lbs.

ELLINGSON LEGACY M229

sire **MR NLC UPGRADE U8676**

MS NLC MOJO S6119 B

CNS DREAM ON L186

dam **J2 MS. DIVAT04**

ET MS GIRL 52M

CE	BW	WW	YW	MCE	Milk	MWW	Marb	REA	API
10.3	1.9	83.6	119.7	4.0	22.7	64.5	0.06	1.12	123.8

Bred on 7/7 to Conley No Limit (ASA# 3770113) confirmed bred
In the past Clear Choice sale, Kentucky Beef Expo and Ohio Beef Expo we have sold many daughters of Diva. She has been faithful over the years.

Bred Heifers

30

CLEAR WATER SIMMENTALS

CLRWTR Lady H5105F

BD. 3/13/20 • ASA#. 3809467 • Purebred Bred Heifer
Tattoo. H5105F • Adj. BW. 88 lbs.

sire LLSF UPRISING Z925
HPF/HILL UPRISING C104
RP/MP RIGHT TO LOVE 015U
CCR WIDE RANGE 9005A
dam CLRWTR LADY C5105X
CLRWTR JOYS SHADES

CE	BW	WW	YW	MCE	Milk	MWW	Marb	REA	API
11.4	1.6	77.3	117.2	6.9	16.6	55.2	-0.04	0.95	116.6

Natural Service to TJ Rage (ASA# 3762954). PE TJ Rage from 4/30/21 to 8/14/21 H5105F is homozygous polled and is daughter of Saban, a son of Right to Love. This solid black bred looks very similar to the rest of her sisters. Each sale the breds out of 5105R have been very popular among breeders. This line has been in production for years, so dependable is the word. She is bred to the calving ease bull, TJ Rage. By the way he looks great after spring breeding. He has an API of 173.



Haefner

Lot 30

31

JORDON SIMMENTALS

J2 Classy H004

BD. 3/5/20 • ASA#. 3803764 • 3/4 Simmental Bred Heifer
Tattoo. H004 • Adj. BW. 85 lbs.

sire YARDLEY UTAH Y361
W/C RELENTLESS 32C
MISS WERNING KP 8543U
S A V BISMARCK 5682
dam CLRWTR LADY LIKE A5105J
CLRWTR JOYS SHADES

CE	BW	WW	YW	MCE	Milk	MWW	Marb	REA	API
10.4	1.7	72.9	101.3	4.8	18.2	54.6	0.13	0.81	106.5

AI'd to THSF Lover Boy B33 (ASA# 2983443) on 5/8/21 H004 is a direct daughter of our 5105 donor. 5105 is a flush mate to Leah's Lucky donor. 3 years ago we sold a \$10,000 Pays to Believe daughter out of 5105 and this Relentless may be better. This full face baldy is bred up to the Griswold calving ease specialist Lover Boy. The pedigree alone is worth a lot on this one.



Jordan

Lot 31

32

CLEAR WATER SIMMENTALS

CLRWTR Shades H5105G

BD. 3/25/20 • ASA#. 3809484 • Purebred Bred Heifer
Tattoo. H5105G • Adj. BW. 75 lbs.

sire TJ MAIN EVENT 503B
CDI INNOVATOR 325D
CDI MS SHEAR FORCE 49U
CCR COWBOY CUT 5048Z
dam CLRWTR SHADES C5105C
CLRWTR JOYS SHADES

CE	BW	WW	YW	MCE	Milk	MWW	Marb	REA	API
13.9	-0.9	81.2	119.8	6.5	21.0	61.5	0.20	0.99	143.4

AI'd to EGL Firesteel (ASA# 3498940) on 4/11/21, TJ Rage (ASA# 3762954) from 4/30/21 to 8/14/21. Too close to call.



Haefner

Lot 32



33

CLEAR WATER SIMMENTALS

CLRWTR *Jazzy* H5105Z

BD. 2/10/20 • ASA#. 3809454 • 3/4 Simmental Bred Heifer
Tattoo. H5105Z • Adj. BW. 88 lbs.

W/C LOADED UP 1119Y

sire **JASS ON THE MARK 69D**

JASS SABLE'S TIME 53X

S A V BRILLIANCE 8077

dam **CLRWTR JOYS BRILLIANCE**

JF EBONYS JOY 5105R

CE	BW	WW	YW	MCE	Milk	MWW	Marb	REA	API
10.3	2.2	75.1	112.3	4.1	19.6	57.1	0.07	0.91	116.0

AI'd to WS Proclamation (ASA# 3254156) on 4/5/21. Likely Safe to AI, TJ Rage (ASA# 3762954) from 4/30/21 to 8/14/21. Too close to call.



34

CLEAR WATER SIMMENTALS

CLRWTR *Boss Lady* H9492

BD. 2/5/20 • ASA#. 3809475 • Purebred Bred Heifer
Tattoo. H9492 • Adj. BW. 83 lbs.

MR CCF VISION

sire **MR CCF 20-20**

HTP SVF DEW THE STROKE

LBS THE FOREMAN 702T

dam **SILVERSTONE CF MSFOREMAN**

JF EBONYS JOY 6125

CE	BW	WW	YW	MCE	Milk	MWW	Marb	REA	API
13.8	0.6	75.4	107.1	5.8	16.1	53.7	0.14	1.01	132.0

AI'd to WHF/JS/CCS Double Up (ASA# 3658592) on 3/30/21, TJ Rage (ASA# 3762954) from 4/30/21 to 8/14/21. Too close to call.

Here is a performance female that is from the Joy line. The young female come bred to the Cattleman's Congress reserve grand bull, WHF JS CCS Double Up.



35

CLEAR WATER SIMMENTALS

CLRWTR *Cora* H58A

BD. 1/13/20 • ASA#. 3809477 • Purebred Bred Heifer
Tattoo. H58A • Adj. BW. 75 lbs.

CCR COWBOY CUT 5048Z

sire **WS PROCLAMATION E202**

WS MISS SUGAR C4

LLSF UPRISING Z925

dam **HF CORA 58C**

RP/MP TOO MUCH FUN 09Z

CE	BW	WW	YW	MCE	Milk	MWW	Marb	REA	API
9.8	1.2	83.3	123.3	6.9	23.2	64.8	0.37	0.74	142.0

AI'd to FBFS Warsaw 068W (ASA# 2489747) on 7/3/21, PE to TJ Rage (ASA# 3762954) from 4/30/21 to 8/4/21

Cora H58A is a baldie with good EPDs across the board, coming with an API of 142. She will be dependable breeding piece. Cora was bred in the Hobbs program and sold to Hudson Pines. Last year in the Clear Choice, Cora was purchased by Hilltop and HTP Simmentals. In the 2019 sale a daughter sold to Stone Fire Genetics. The vet said she likely due to Warsaw. He makes great females don't forget the reliable ones.

Bred Heifers

36

CLEAR WATER SIMMENTALS

CLRWTR *Coolbaby* H046

BD. 1/14/20 • ASA#. 3809481 • Purebred Bred Heifer
Tattoo. H046 • Adj. BW. 75 lbs.

CNS PAYS TO DREAM T759

sire LLSF PAYS TO BELIEVE ZU194

LLSF URABABYDOLL U194

W/C EXECUTIVE ORDER 8543B

dam HPF COOL BABY E046

HS COOL BABY C38Z

CE	BW	WW	YW	MCE	Milk	MWW	Marb	REA	API
12.7	-0.5	70.2	107.1	6.8	21.3	56.3	0.17	0.83	123.2

AI'd to WS Proclamation (ASA# 3254156) on 3/30/21, PE to TJ Rage (ASA# 3762954) from 4/30/21 to 8/4/21. Likely safe AI.

Cool Baby is not a baby no more; she will hopefully calve to her ai date to Proclamation. This female is very feminine headed with a beauty queen look. H046 is broody being deep flanked and capacious. She will be in your pasture for a long time and produce marketable calves each year. Backed by Burn Baby Burn.



37

CLEAR WATER SIMMENTALS

CLRWTR *Black Jewel* H760

BD. 1/31/20 • ASA#. 3809444 • Purebred Bred Heifer
Tattoo. H760 • Adj. BW. 80 lbs.

W/C EXECUTIVE ORDER 8543B

sire OBCC CMFM DEPLORABULL D148

LAZYH/ADKINS BLKSTAR Z15

SVF/NJC BUILT RIGHT N48

dam EKHCC RED JEWEL 760

EKHCC CROWN JEWEL 523

CE	BW	WW	YW	MCE	Milk	MWW	Marb	REA	API
10.7	1.6	74.1	112.2	5.7	26.7	63.7	0.05	0.80	119.4

PE to TJ Rage (ASA# 3762954) from 4/30/21 to 8/4/21, Naturally serviced on 5/8/21

Black Jewel is not the prettiest or sleekest made in the sale however she is deep bodied with loads of shape to her rib and overall capacity. There is no doubt or question about her future place and that to maintain her body condition and raise a big strapping calf. H760 will be efficient and could be the dam of your next herd bull. Red Jewel has been a tremendous influence to many operations. Look at TJ Rage's picture and his dam too, both impressive. Last year her half sister sold to Brookland Farms.



38

BESHEARS SIMMENTALS

BESH *Ms Ethel* HE19

BD. 2/17/20 • ASA#. 3765590 • Purebred Bred Heifer
Tattoo. HE19 • Adj. BW. 76 lbs.

W/C EXECUTIVE ORDER 8543B

sire OBCC CMFM DEPLORABULL D148

LAZYH/ADKINS BLKSTAR Z15

BESHEARS TRUE MANT7

dam BESH ETHEL W24

BESHEARS NEW YEARS EVE

CE	BW	WW	YW	MCE	Milk	MWW	Marb	REA	API
11.5	1.7	68.2	103.0	6.7	23.1	57.2	-0.10	0.85	111.0

AI'd to Tehama Tahoe B767 (ASA# 3396482) sexed female semen on 3/21/21, confirmed bred

The Deplorabull females are few and far between and most breeders prefer to retain in their herd. This is in that bunch. She is a complete individual with some muscling rear, and hip. She blends it all together to be a front runner. We sold two full sisters that were purchased by Michael Kuhn at \$4,700 and \$7,000 to Paul Rumble.





39

CLEAR WATER SIMMENTALS/HTP SIMMENTALS

CLRWTR HTP *Dreamy* H69C

BD. 2/21/20 • ASA#. 3809473 • Purebred Bred Heifer
Tattoo. H69C • Adj. BW. 86 lbs.

LLSF UPRISING Z925

sire HPF/HILL UPRISING C104

RP/MP RIGHT TO LOVE 015U

LMF MOVIN FORWARD

dam CLRWTR HTP DREAMS D69C

SS MAGNIFICENT DREAMS

CE	BW	WW	YW	MCE	Milk	MWW	Marb	REA	API
12.2	1.5	64.4	95.8	7.0	22.3	54.5	0.09	0.64	121.3

AI'd to WS Proclamation (ASA# 3254156) on 4/19/21, PE to TJ Rage (ASA# 3762954) from 4/30/21 to 8/14/21

Here is one of several breeders favorite. We feel the breds are a consistent group and being the best offered. Dreamy is moderate in her frame however complete in her overall makeup. H69C is easy to like and should on your short list to take home and put to work and reap the rewards. Backed by Magnetic Lady. Look forward to her calf.



40

CLEAR WATER SIMMENTALS

CLRWTR *Just Right* H833

BD. 2/25/20 • ASA#. 3809479 • Purebred Bred Heifer
Tattoo. H833 • Adj. BW. 79 lbs.

MR CCF VISION

sire CLRWTR 24/7 E93A

HTP SVF DEW THE STROKE

WELSHS DEW IT RIGHT067T

dam BWL DEW RIGHT 83C

LHT MS CHOPPER 83Z

CE	BW	WW	YW	MCE	Milk	MWW	Marb	REA	API
12.4	0.8	77.9	111.6	6.0	17.9	56.8	0.05	0.86	123.9

PE to TJ Rage (ASA# 3762954) from 4/30/21 to 8/14/21. Natural Service on 4/21/21

Like I said before at Clear Water we are super proud of our breds. They somewhat are the same type and kind. I feel confident all will work for any type of operation. H833 is sired by 20 20's full brother 24/7. Just Right's dam a Dew it Right is a whale of a cow. H833 is square from behind and wide hipped. Bred to the homo polled and homo black CW herd sire, TJ Rage.



41

BESHEARS SIMMENTALS

BESH *Ms* H54

BD. 3/8/20 • ASA#. 3765641 • 1/2 Simmental Bred Heifer
Tattoo. H54 • Adj. BW. 88 lbs.

MR HOC BROKER

sire BESH HAPPY TIME D910

NJC/TJF JOY

dam 54

CE	BW	WW	YW	MCE	Milk	MWW	Marb	REA	API
7.5	2.5	67.9	92.7	3.8	22.2	56.1	-0.02	0.77	88.2

AI'd to TJ Rage (ASA# 3762954) on 3/31/21

H54 and H163 are two females sired by the Broker son, Besh Happy Time. If you need to add or replace some cows these will be nice additions to add as money makers. Both solid bred heifers.

Bred Heifers

42

BESH *Ms Smiles* H163

BD. 3/8/20 • ASA#. 3765640 • 1/2 Simmental Bred Heifer
Tattoo. H163 • Adj. BW. 86 lbs.

MR HOC BROKER

sire **BESH HAPPY TIME D910**

NJC/TJF JOY

WHEATLAND MRBOJANGLES97X

dam **BESH MS REDNESS ZM163**

LAZY K FRANCIS M163

CE	BW	WW	YW	MCE	Milk	MWW	Marb	REA	API
6.0	2.9	67.4	98.0	3.0	22.4	56.0	-0.05	0.80	98.4

Natural Service on 5/7 to BESH Bull H123 (ASA# 3765612), confirmed bred,
PE 4/30/21 to 8/1/21



Lot 42

43

CLRWTR *Sloane* H8

BD. 3/12/20 • ASA#. Pending • Purebred Bred Heifer
Tattoo. H8

WLE UNO MAS X549

sire **WLE BIG IRON E205**

C BAR/WLE WANDA A991

TNGL GRAND FORTUNE Z467

dam **TYLERTOWN REUNITED**

TYLERTOWN REUNITED

Projected EPDs

CE	BW	WW	YW	MCE	Milk	MWW	Marb	REA	API
12.6	1.6	80.6	118.8	6.7	21.8	62.1	0.20	0.80	131.1

AI'd to SFG Cowboy Logic (ASA# 3208956), PE to TJ Rage (ASA# 3762954)
from 4/30/21 to 8/14/21.



Lot 43

44

BESH *Ms Silver* H050

BD. 3/19/20 • ASA#. 3765615 • Purebred Bred Heifer
Tattoo. H050 • Adj. BW. 81 lbs.

CNS PAYS TO DREAM T759

sire **LLSF PAYS TO BELIEVE ZU194**

LLSF URABABYDOLL U194

STF DOMINANCE T171

dam **STF MISS W474**

GCF MISS CALIENTE

Projected EPDs

CE	BW	WW	YW	MCE	Milk	MWW	Marb	REA	API
8.9	2.9	63.4	92.5	4.1	19.9	51.6	0.07	0.76	108.7

AI'd to Tehama Tahoe B767 (ASA# 3396482) sexed female semen on
4/6/21, confirmed bred

H050 is good genetics all around. Ms Silver's dam is a full sister to Onyx. This
female represents performance and will pass on to her offspring.



Lot 44

45

CLRWTR *Chasity* H652

BD. 4/1/20 • ASA#. 3809462 • 3/4 Simmental Bred Heifer
Tattoo. H652 • Adj. BW. 84 lbs.

LLSF UPRISING Z925

sire **HPF/HILL UPRISING C104**

RP/MP RIGHT TO LOVE 015U

STF MOMENT AHEAD PJ26

dam **STF CHASTITY U652**

STF MISS 652N

CE	BW	WW	YW	MCE	Milk	MWW	Marb	REA	API
11.8	0.3	56.6	87.0	7.3	18.5	46.8	0.12	0.38	109.2

PE to TJ Rage (ASA# 3762954) from 4/30/21 to 8/14/21. Natural Service on 7/11/21
H652 is younger of the breeds however is moderate framed with a great profile with
balance and eye appeal. We are happy with the Saban females and expect them to
make dependable cows. H652 is the type. Rage on.



Lot 45



46

CLEAR WATER SIMMENTALS & HTP SIMMENTALS

KDP/TL Miss Blue Marry

BD. 4/4/20 • ASA#. 3842106 • Purebred Bred Heifer
Tattoo. H60 • Adj. BW. 75 lbs.

CNS PAYS TO DREAM T759

sire **LLSF PAYS TO BELIEVE ZU194**

LLSF URABABYDOLL U194

SVF STEEL FORCE S701

dam **KDP MISS HOYA BLUE**

K-LER/RC MISS HOYA SAXA

CE	BW	WW	YW	MCE	Milk	MWW	Marb	REA	API
11.0	2.4	75.7	108.9	5.5	20.8	58.6	0.11	0.90	117.7

PE to TJ Rage (ASA# 3762954) from 4/30/21 to 8/14/21. Natural Service on 7/17/21

Blue Mary has some history in her pedigree and recent winners, sale toppers and donors. The Hoya Saxa family is well known pretty much in all circles. H60 dam is Hoya Blue a past show heifer for Derek Ritchie. She as champion bred and owned at the 2016 AJSA Jr Nationals. Remember the Pays to Believe x Hoya Saxa campaigned by the Udell and Noble families. She was a triple crown winner, American Royal, North American and Cattleman's Congress. She is safe to TJ Rage.



47

BESHEARS SIMMENTALS

BESH Ms Henrietta H35

BD. 4/8/20 • ASA#. 3765607 • Purebred Bred Heifer
Tattoo. H35 • Adj. BW. 82 lbs.

SVF STEEL FORCE S701

sire **TJSC OPTIMUS PRIME 12W**

KS MISS SHES SO SWEET 9

GWS EBONYS TRADEMARK 6N

dam **HPF MS HENRIETTA U807**

TCSF HENRIETTA P28

Projected EPDs

CE	BW	WW	YW	MCE	Milk	MWW	Marb	REA	API
9.3	3.0	74.9	106.5	0.8	14.6	52.0	0.14	0.73	117.1

AI'd to CLRS Guardian 317G (ASA# 3563436) on 4/18/21, confirmed bred Research H35's pedigree and you will find some old genetics but ones that excelled even at Denver. H35 is long bodied female with a strong level top. This female will be useful addition. Don't forget the influence of Shes So Sweet.



48

BESHEARS SIMMENTALS

BESH Ms Eo8

BD. 4/20/20 • ASA#. 3765666 • 3/4 Simmental Bred Heifer
Tattoo. HE08 • Adj. BW. 73 lbs.

BESHEARS TRUE MANT7

sire **BESH BULL 739W**

STF MISS 739W

WHEATLAND MRBOJANGLES97X

dam **BESH MS E08**

903

CE	BW	WW	YW	MCE	Milk	MWW	Marb	REA	API
12.7	-0.3	63.3	92.6	7.5	24.4	56.0	0.02	0.82	116.4

PE to BESH Bull H123 (ASA# 3765612) from 4/30/21 to 7/1/21 confirmed bred E08 will be just like her dam, a calf raising cow. To quote my Dad, sometimes the prettiest girls don't make the best biscuits. My Dad got me started in the business and now he can't get me out.

Bred Females

49

BESHEARS SIMMENTALS

KRI BESH *Ms* HEU2

BD. 4/20/20 • ASA#. 3932609 • Purebred Bred Heifer
Tattoo. HEU2 • Adj. BW. 80 lbs.

BESHEARS TRUE MANT7

sire BESH BULL 739W

STF MISS 739W

W/C BF INNOCENT MAN

dam BESH MS WINNIE EU2

TRIPLE C MISS WISCONSIN

CE	BW	WW	YW	MCE	Milk	MWW	Marb	REA	API
11.8	0.6	61.8	89.3	7.2	28.4	59.3	-0.01	1.00	120.4

Natural Service on 5/16 to BESH Bull H123 (ASA# 3765612), confirmed bred, PE from 4/30/21 to 8/1/21

If you need some outcross genetics or even some would say old time. This female is deep, soft middled, wide based and functional. This female packs a lot in her complete package. HEU2 goes back to Triple C Miss Wisconsin, Grace N10, Black Jasmine and BVD Crystal. My Dads still remember all those genetics. A big shout out to Kenny.



50

CLEAR WATER SIMMENTALS/MADLUKE CATTLE CO

HILB *Fashion Statement*

BD. 5/11/18 • ASA#. 3465995 • Purebred Bred Cow
Tattoo. F17C • Adj. BW. 62 lbs.

W/C UNITED 956Y

sire W/C EXECUTIVE ORDER 8543B

MISS WERNING KP 8543U

SVF STEEL FORCE S701

dam AJE MS CHANEL Y32

BHS JF ANTOINETTES JOY

CE	BW	WW	YW	MCE	Milk	MWW	Marb	REA	API
14.2	-0.7	74.2	109.3	6.1	24.1	61.1	-0.03	0.84	114.5

AI'd to HILB Oracle C033R (ASA# 3745527) sexed heifer semen on 6/17/21

Not every day you have the opportunity to purchase a full sister to Versace. Versace is a past Denver high seller and now a donor for Sloup/Deling and Fenton Farms. Versace is an elite producer in embryo production and progeny as well. I am sure we will hear more about her and the progeny. Fashion Statement is the baldie full sister that exhibits that cool look with extension in the front one third. She is balanced up with body, length and muscle. F17C is safe in calf and was AI bred on 6/17/21 with sexed Oracle semen.



Full Sister

51

BESHEARS SIMMENTALS

BESH *Ms* Joy Time BN05

BD. 9/1/14 • ASA#. 2985218 • Purebred Bred Cow
Tattoo. BN05 • Adj. BW. 80 lbs.

CNS DREAM ON L186

sire HTP SVF IN DEW TIME

HTP SVF HONEYDEW

HC POWER DRIVE 88H

dam SOSF JOYS MAGNOLIA N-05

NJC/TJF JOY

CE	BW	WW	YW	MCE	Milk	MWW	Marb	REA	API
13.5	0.6	69.6	97.8	6.2	21.7	56.5	0.04	0.73	129.8

AI'd to SWR Night Train (ASA# 3775867) on 4/5/21, confirmed bred

Don't overlook this cow. Yes, she is one to study however it should not take a long time look at that near perfect udder. In Dew Time is known for calving ease, maternal with excellent udders and just no hole females. This baldie progeny record is good.





AI'd to LLSF Pays to Believe (ASA# 2659897) on 6/8/21
Splash is a hard one to sell. It got even harder after we pictured her. I had no intentions on moving this one so young, but we were short on breds and opens and our commitment to the sale remains high, so here she is. I have no doubt she will make a donor pen. Ones that are this sound and good looking don't come along everyday. Buy her and enjoy.



JORDON SIMMENTALS

CLRWTR *Makin a Splash*

BD. 1/26/18 • ASA#. 3452644 • Purebred Bred Cow
 Tattoo. F364 • Adj. BW, 81 lbs.

LLSF UPRISING Z925

sire HPF/HILL UPRISING C104

RP/MP RIGHT TO LOVE 015U

RGRS SRG TWO STEP 20Z ET

dam DAF BLACKBIRD C364

DAF BLACKBIRD A164

CE	BW	WW	YW	MCE	Milk	MWW	Marb	REA	API
11.6	1.9	72.2	103.0	6.9	18.7	54.7	0.18	0.67	121.5

\$50/UNIT

RAGE



Hatmaker

TJ RAGE 437H

**ASA# 3762954 • Purebred Simmental
Homozygous Black & Homozygous Polled**

TJ Main Event 503B
TJ Teardrop 783F
TJ Ms 38W

X

CCR Cowboy Cut 5048Z
TJ 92C
TJ 43Z



Dam

- Top tier figures to change a program
- Sired by the deceased TJ Teardrop
- Dam is a young standout in the Triangle J program and daughters of the great 43Z

CE	BW	WW	YW	ADG	MCE	Milk	MWW	Stay	Doc	CW	YG	Marb	BF	REA	Shr	API	TI
15.8	-1.0	87.2	126.9	0.25	8.1	41.7	85.2	26.2	13.5	34.4	-0.26	0.32	-0.051	0.75	-0.35	173.7	93.0
4	10	15	25	40	15	1	1	1	20	30	99	15	95	80	45	1	4

CALL US TO ORDER YOUR SEMEN TODAY!



Doug Parke • 859-421-6100
Drew Hatmaker • 423-506-8844



Jeff & Leah Meinders • 812-498-2840
3687 N. Co. Rd. 500 E • Milan, IN 47031
www.clearwatersimmentals.com



DP Sales Management, LLC
153 Bourbon Hills
Paris, KY 40361
www.dpsalesllc.com



4TH ANNUAL
**THE CLEAR
CHOICE**
female sale

SATURDAY, OCTOBER 23, 2021

12:00 PM EST • MILAN, IN

Selling 60+ Simmental & SimAngus Females

Show Heifer Prospects, Proven Donors & Bred Females